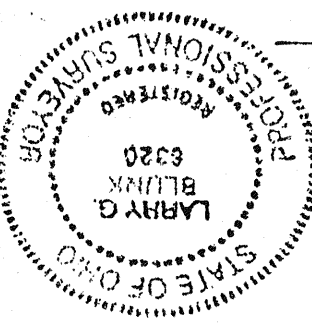


DRAWING NUMBER		LARRY G. BLINK #6320	
DATE: APR. 21 2004		LARRY G. BLINK #6320	
APPROVED BY		LARRY G. BLINK #6320	
DRAWN BY		LARRY G. BLINK #6320	
PLAT OF SURVEY LOCATED IN THE SOUTHWEST 1/4, SECTION 3, TOWNSHIP 23, RANGE 18, BLOOMINGGROVE TOWNSHIP, RICHLAND COUNTY, OHIO.			

Larry G. Blink



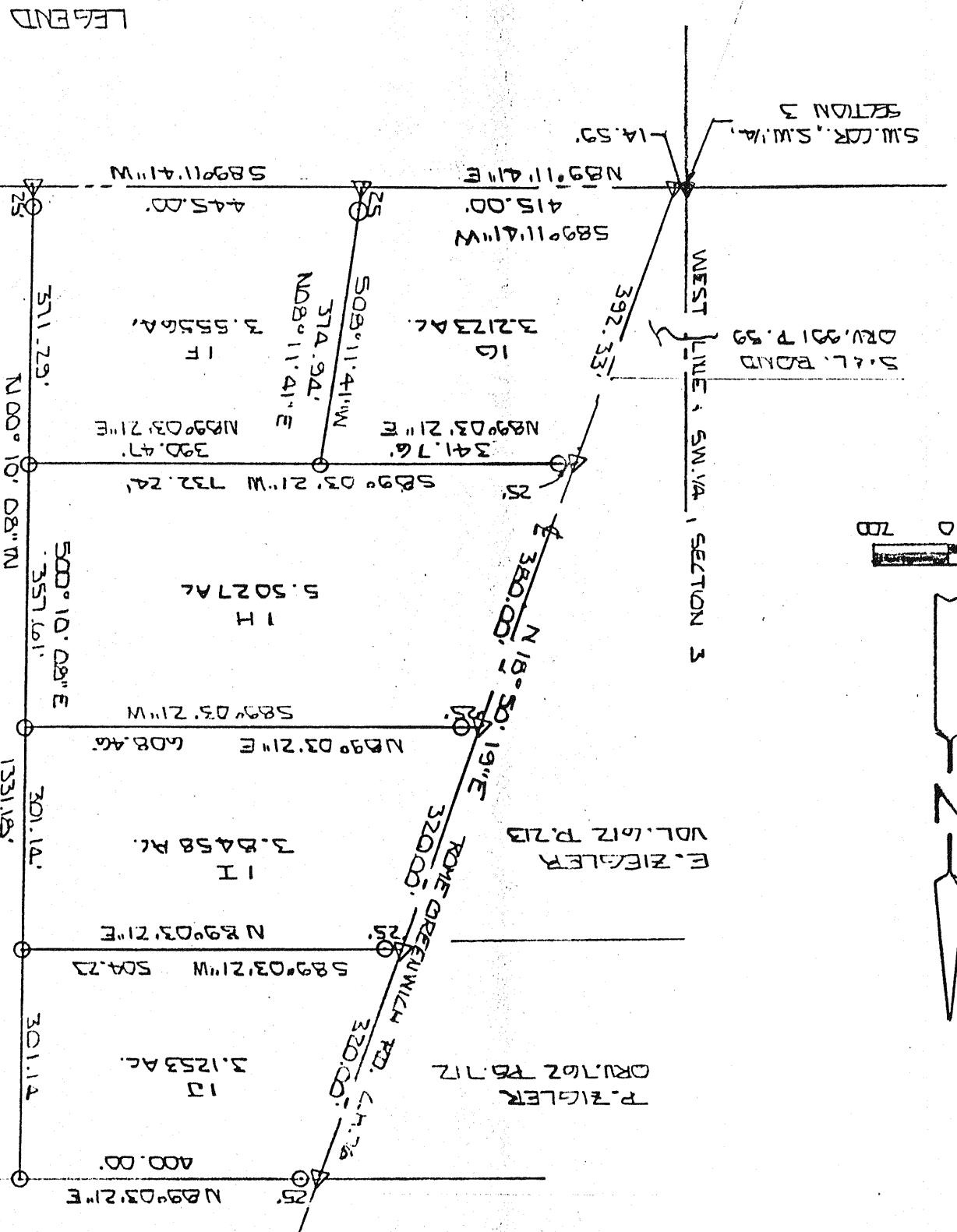
BY *Larry G. Blink*
LARRY G. BLINK #6320

BEARINGS ARE TO AN ASSUMED AZIMUTH AND ARE USED TO DENOTE ANGLES ONLY.

○ - I.P. SET & CAPED BULK #6320
 △ - MAG NAIL SET
 ▲ - P.K. NAIL FOUND
 ● - T.L.R. SPIKE FOUND

NEW SPLIT
RICHLAND COUNTY
TAX MAP OFFICE
DATE: 5-10-04
INITIAL: MJB

NEW SURVEY
RICHLAND COUNTY
TAX MAP OFFICE
DATE: 5-10-04
INITIAL: MJB



54.7525 AC.

R. BISEL & J. M. CRACKEN
DRU. 127 P. 841

T.A. STEPHENS
DRU. 262 P. 520

501°43'05"E
EAST LINE, SW 1/4, SECTION 3
1335.56'

589°11'41"W
Noble Rd, C.H. 81
1806.91'

S.E. LDR, SW 1/4, SECTION 3