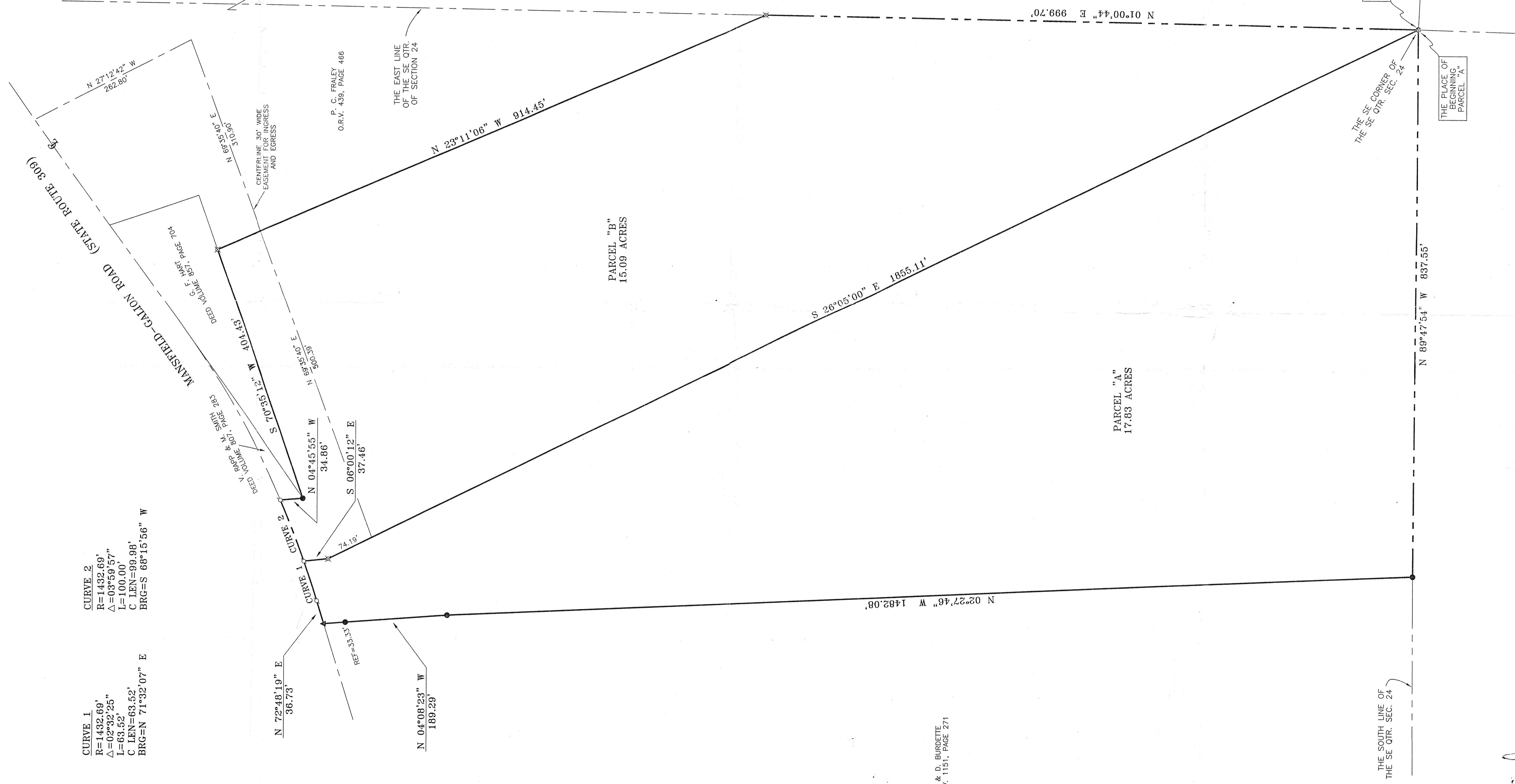


CURVE 1
 R=1432.69'
 $\Delta=02^{\circ}32'25''$
 L=63.52'
 C LEN=63.52'
 BRG=N 71^{\circ}32'07" E

CURVE 2
 R=1432.69'
 $\Delta=03^{\circ}59'57''$
 L=100.00'
 C LEN=99.98'
 BRG=S 68^{\circ}15'56" W



P. C. FRALEY
 O.R.V. 439, PAGE 466

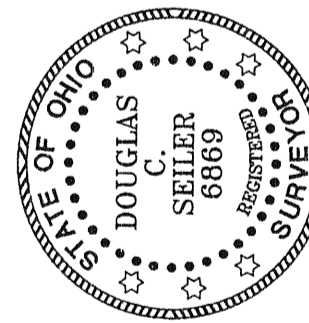
P. C. FRALEY
 O.R.V. 439, PAGE 466

BEARINGS ARE BASED ON
 AN ASSUMED MERIDIAN

T. & D. BURSETTE
 O.R.V. 1151, PAGE 271

- LEGEND:
- IRON PIN FOUND
 - WOODEN CORNER POST
 - ▲ RR SPIKE FOUND
 - ⊕ MAG NAIL SPIKE SET
 - ⊗ IRON PIN SET WITH CAP STAMPED "SEILER 6869"

SURVEYED BY: *Douglas C. Seiler*
 DOUGLAS C. SEILER
 PROFESSIONAL SURVEYOR #6869
 52-1/2 NORTH MAIN STREET
 MANSFIELD, OHIO 44902
 (419) 525-3644
 FAX (419) 525-3696



APPROVED THIS 14 DAY OF Dec, 2003.

JIM WOLF
 SANDUSKY TOWNSHIP

NEW SPIN
 SANDUSKY COUNTY
 TAX MAP OFFICE
 FAX: 419-235-1212

SURVEY PLAT FOR	
PROPERTY TRANSFER	
PART SE QTR. SEC. 24, T-20, R-20	
SANDUSKY TOWNSHIP,	
RICHLAND COUNTY, OHIO	
DATE: NOVEMBER 11, 2003	SCALE: 1"=80'