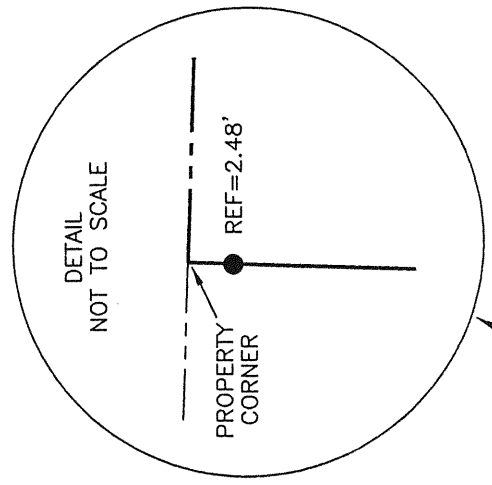


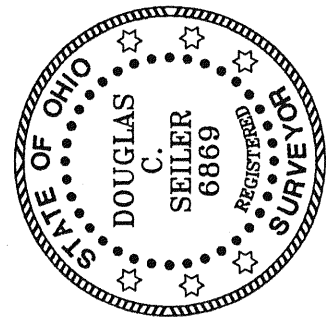
BEARINGS ARE BASED ON
ANY ASSUMED MERIDIAN



45.00 ACRES

L. SCHMIDT, Et. Al.
O.R.V. #81, PAGE 672
O.R.V. #104, PAGE 86

- LEGEND
- IRON PIN FOUND
 - ▲ RR SPIKE FOUND
 - × 5/8" IRON PIN SET WITH CAP STAMPED "SEILER 6869"



SURVEY BY: *Douglas C. Seiler*
DOUGLAS C. SEILER #6869
PROFESSIONAL SURVEYOR
1100 W. MAIN STREET
MANSFIELD, OHIO 44802
(419) 525-3644
FAX (419) 525-3696

RICHLAND COUNTY
STATE MAP OFFICE
LUCAS COUNTY
REGISTERED

APPROVED THIS 16 DAY OF August, 2003

William C. Erdemberger
WILLIAM ERDENBERGER
MONROE TOWNSHIP
ZONING INSPECTOR

SURVEY PLAT FOR
LUCAS LOCAL SCHOOL BOARD
PART NW QTR. SEC. 9, T-22, R-17
MONROE TOWNSHIP
RICHLAND COUNTY, OHIO
DATE: JULY 29, 2003
SCALE: 1"=100'
LUCASCH