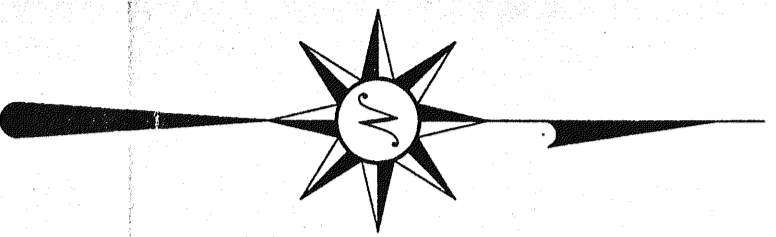
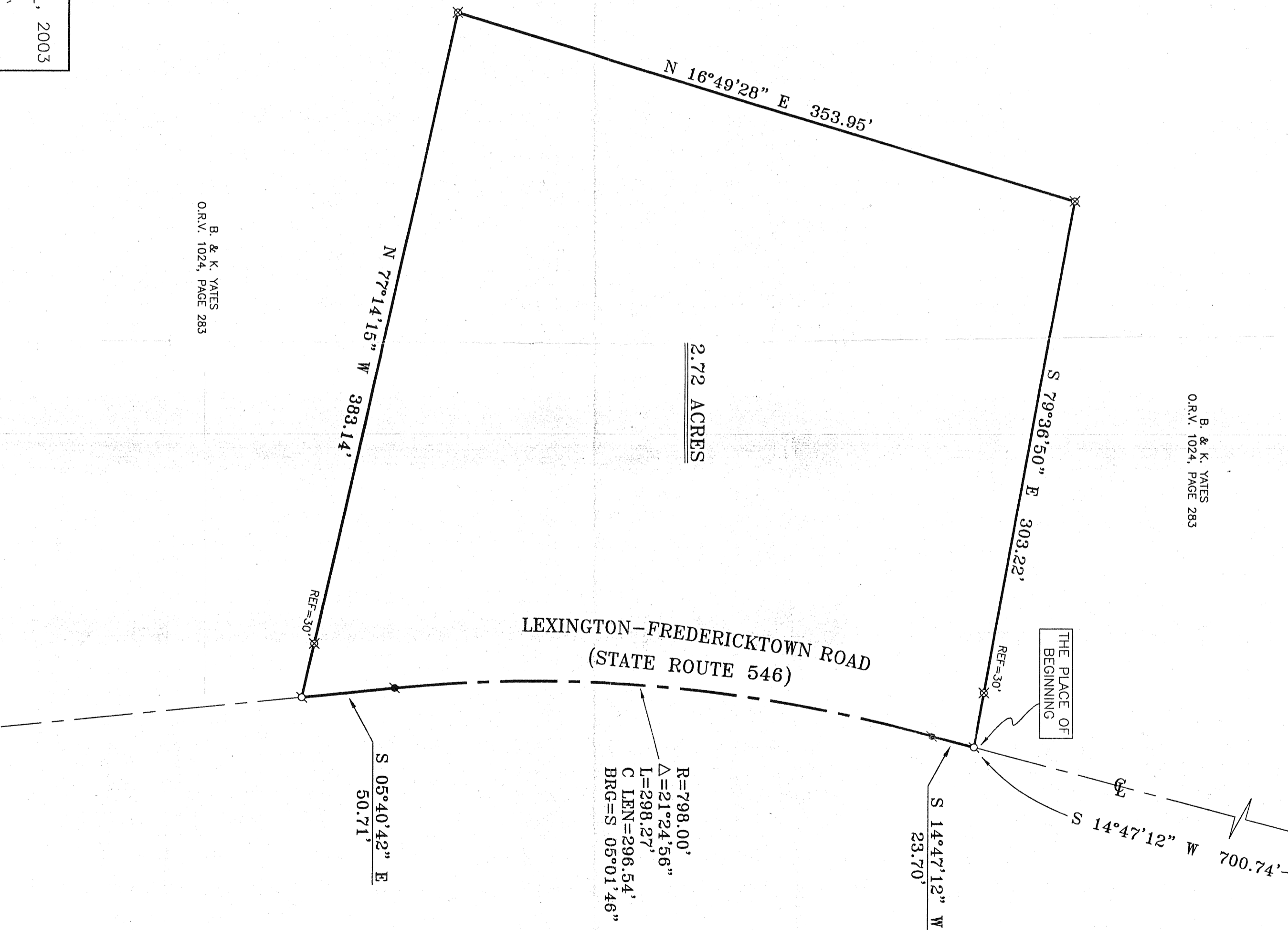


B. & K. YATES
O.R.V. 1024, PAGE 283

NOT TO SCALE



BEARINGS ARE BASED ON
AN ASSUMED MERIDIAN



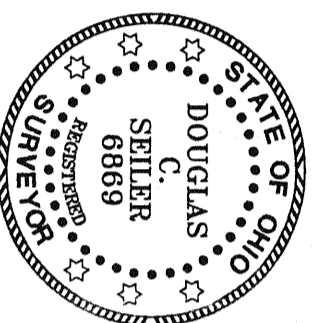
B. & K. YATES
O.R.V. 1024, PAGE 283

APPROVED THIS 16 DAY OF May, 2003

Michael Demerick Troy Emery
MIKE DIEMER
TROY TOWNSHIP
ZONING INSPECTOR

Douglas C. Seiler 5/12/03

SURVEYED BY: DOUGLAS C. SEILER
PROFESSIONAL SURVEYOR #6869
52-1/2 NORTH MAIN STREET
MANSFIELD, OHIO 44902
(419) 525-3644
FAX (419) 525-3696



NEW SPILT
RICHLAND COUNTY
TAX MAP OFFICE
EAK 5-10-03
INITIAL DATE

LEGEND

- IRON PIN FOUND
- ▲ RR SPIKE FOUND
- ✱ MAG NAIL SPIKE FOUND
- ♁ MAG NAIL SPIKE SET
- ⊗ IRON PIN SET WITH CAP STAMPED "SEILER 6869"

SURVEY PLAT FOR

YATES

PART SE QTR. SEC. 35, T-20, R19
TROY TOWNSHIP
RICHLAND COUNTY, OHIO

DATE: MAY 2, 2003 SCALE: 1"=50'
YATES03