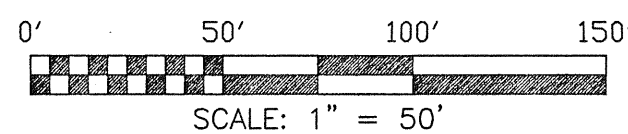
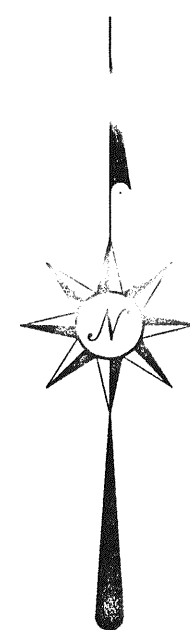


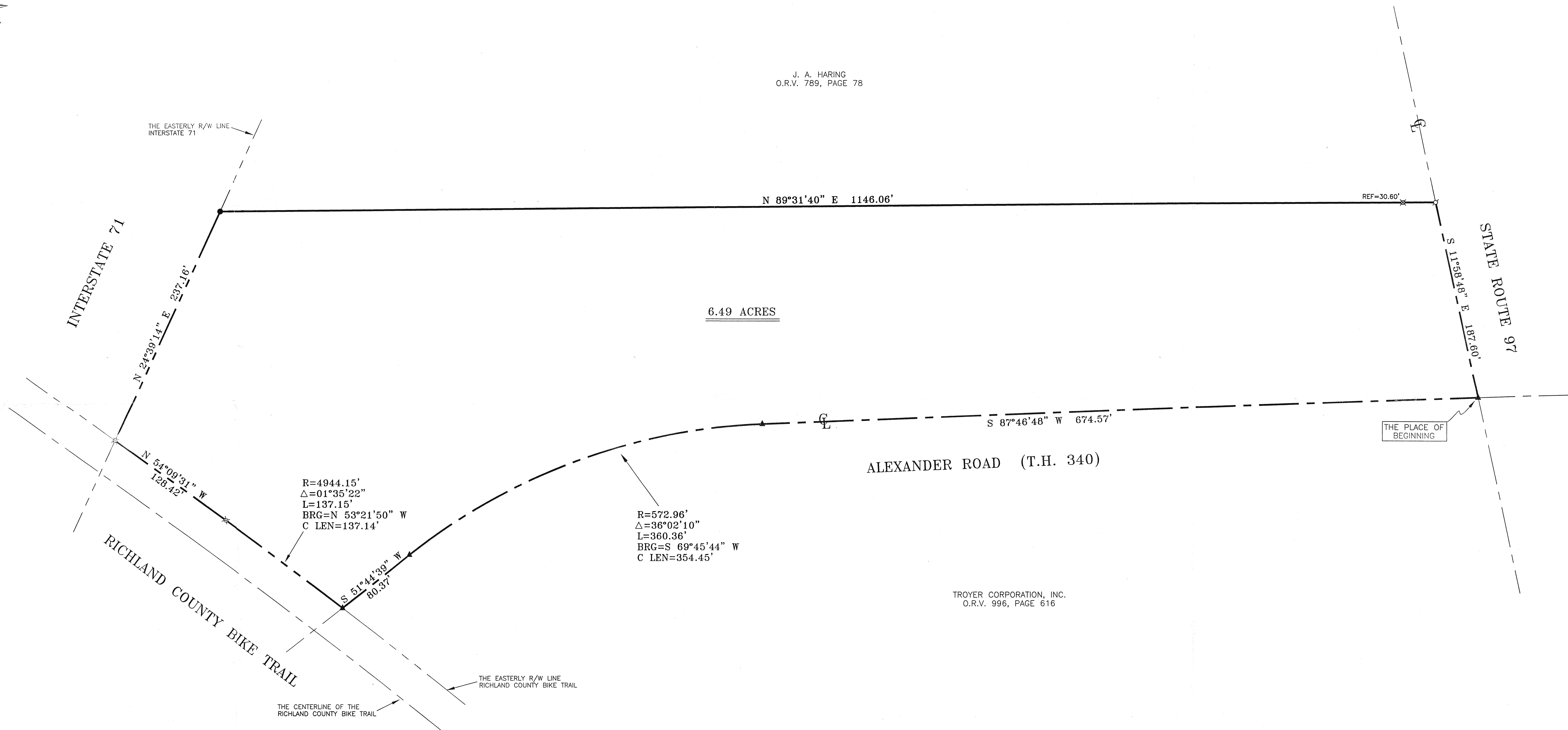
RANDY SNAVELY
VILLAGE OF BELLVILLE
ZONING INSPECTOR

NORTH



BEARINGS ARE BASED ON
AN ASSUMED MERIDIAN

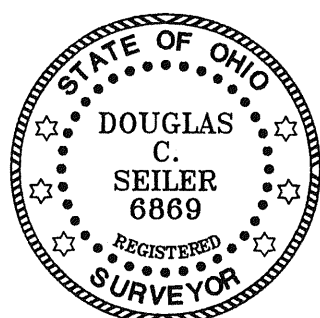
J. A. HARING
O.R.V. 789, PAGE 78



TROYER CORPORATION, INC.
O.R.V. 996, PAGE 616

- ▲ RR SPIKE FOUND
- △ RR SPIKE SET
- ⊘ MAG NAIL SPIKE SET
- ⊗ IRON PIN SET WITH CAP
STAMPED "SEILER 6869"

NEW SPLIT
RICHLAND COUNTY
TAX MAP OFFICE
4/4/02
INITIAL DATE



SURVEYED BY: DOUGLAS C. SEILER
PROFESSIONAL SURVEYOR #6869
52-1/2 NORTH MAIN STREET
MANSFIELD, OHIO 44902
(419) 525-3644
FAX (419) 525-3696

SURVEY PLAT FOR
LEVI TROYER

PART SW QTR. SEC. 32, T-20, R-18
VILLAGE OF BELLVILLE
RICHLAND COUNTY, OHIO

DATE: APRIL 4, 2002 SCALE: 1"=50'

TROYERCO