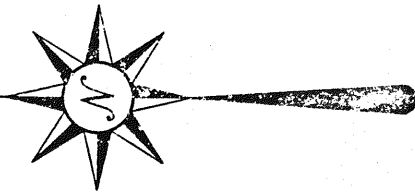


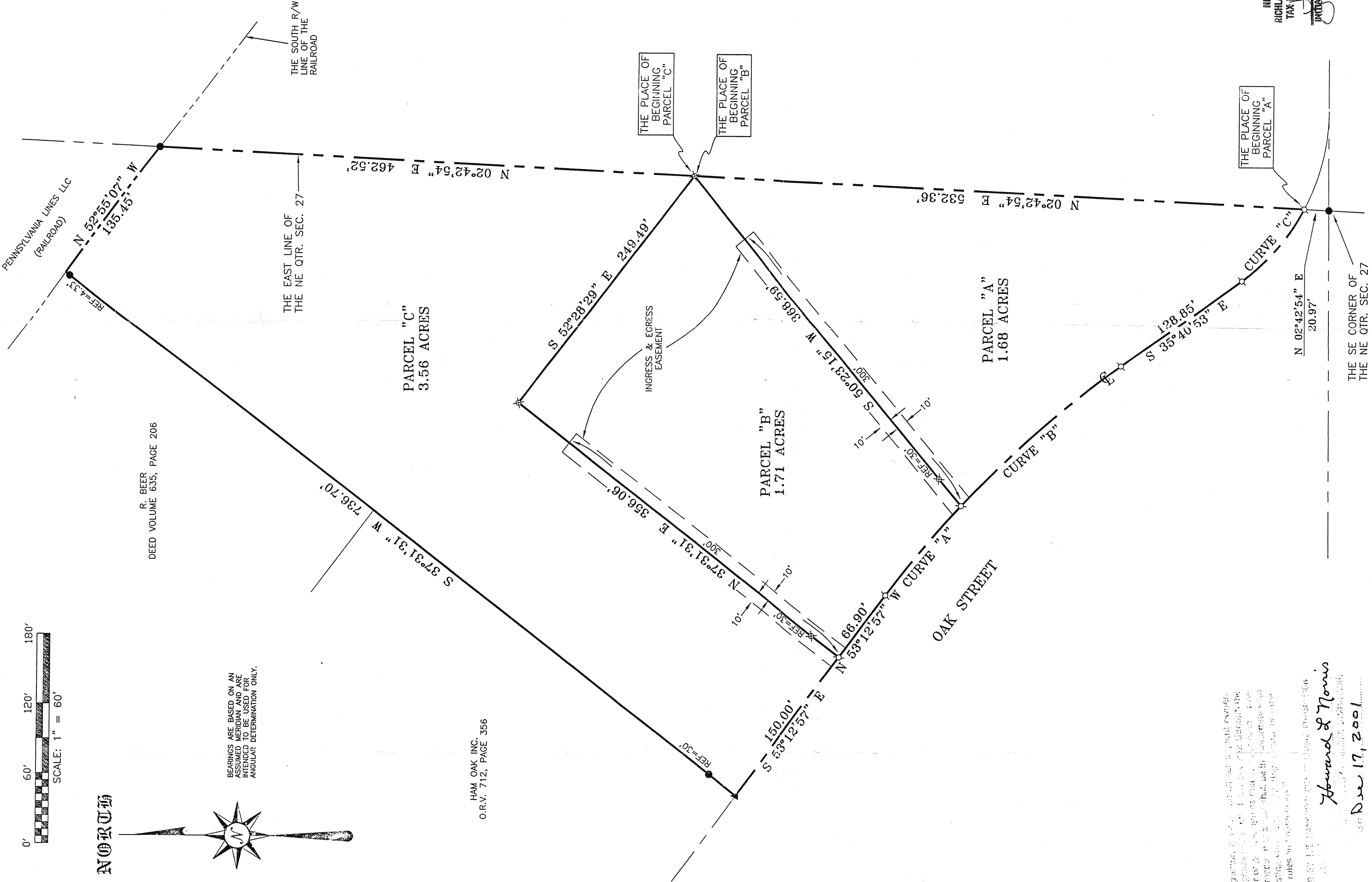
NORTH



BEARINGS ARE BASED ON AN ASSUMED MERIDIAN AND ARE INTENDED TO BE USED FOR ANGULAR DETERMINATION ONLY.

HAM OAK INC.  
O.R.V. 712, PAGE 356

R. BEER  
DEED VOLUME 635, PAGE 206



- ▲ RR SPIKE FOUND
- IRON PIN FOUND
- ⊘ MAG NAIL SPIKE SET
- ⊗ IRON PIN SET WITH CAP STAMPED "SEILER 6869"

**CURVE "A"**  
R=930.00'  
Δ=6°12'10"  
L=100.68'  
BRG=N 50°06'52" W  
C LEN=100.63'

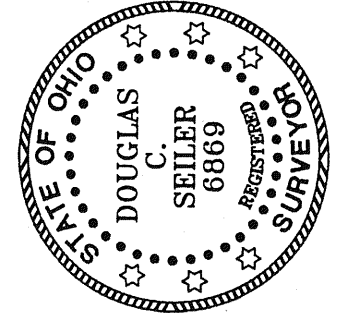
**CURVE "B"**  
R=930.00'  
Δ=11°19'54"  
L=183.93'  
BRG=S 41°20'50" E  
C LEN=183.63'

**CURVE "C"**  
R=180.00'  
Δ=26°31'18"  
L=83.32'  
BRG=S 48°56'34" E  
C LEN=82.58'

The location of all spikes and pins shown on this plat were determined by the surveyor on the ground. The location of all spikes and pins shown on this plat were determined by the surveyor on the ground. The location of all spikes and pins shown on this plat were determined by the surveyor on the ground.

Approved by the Professional Surveyor:  
*Howard L. Norris*  
Date 17, 2001

SURVEY BY:  
*Douglas C. Seiler* 12/17/01  
DOUGLAS C. SEILER  
PROFESSIONAL SURVEYOR #6869  
52-7/2 NORTH MAIN STREET  
MANSFIELD, OHIO 44902  
(419) 525-3644  
FAX (419) 525-3696



NEW SPLIT  
RICHLAND COUNTY  
TAX MAP OFFICE  
DATE 12-19-01  
INITIAL DATE

NEW SURVEY  
OF EXISTING PARCEL  
RICHLAND COUNTY  
TAX MAP OFFICE  
DATE 12-19-01  
INITIAL DATE

SURVEY PLAT FOR	
MAGLOTT	
PART NE QTR. SEC. 27, T-21, R-18	
CITY OF MANSFIELD, RICHLAND COUNTY, OHIO	
DATE: OCT. 1, 2001	SCALE: 1"=60'
4650AKST	