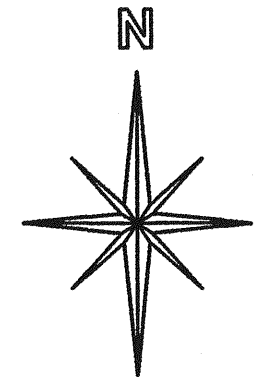
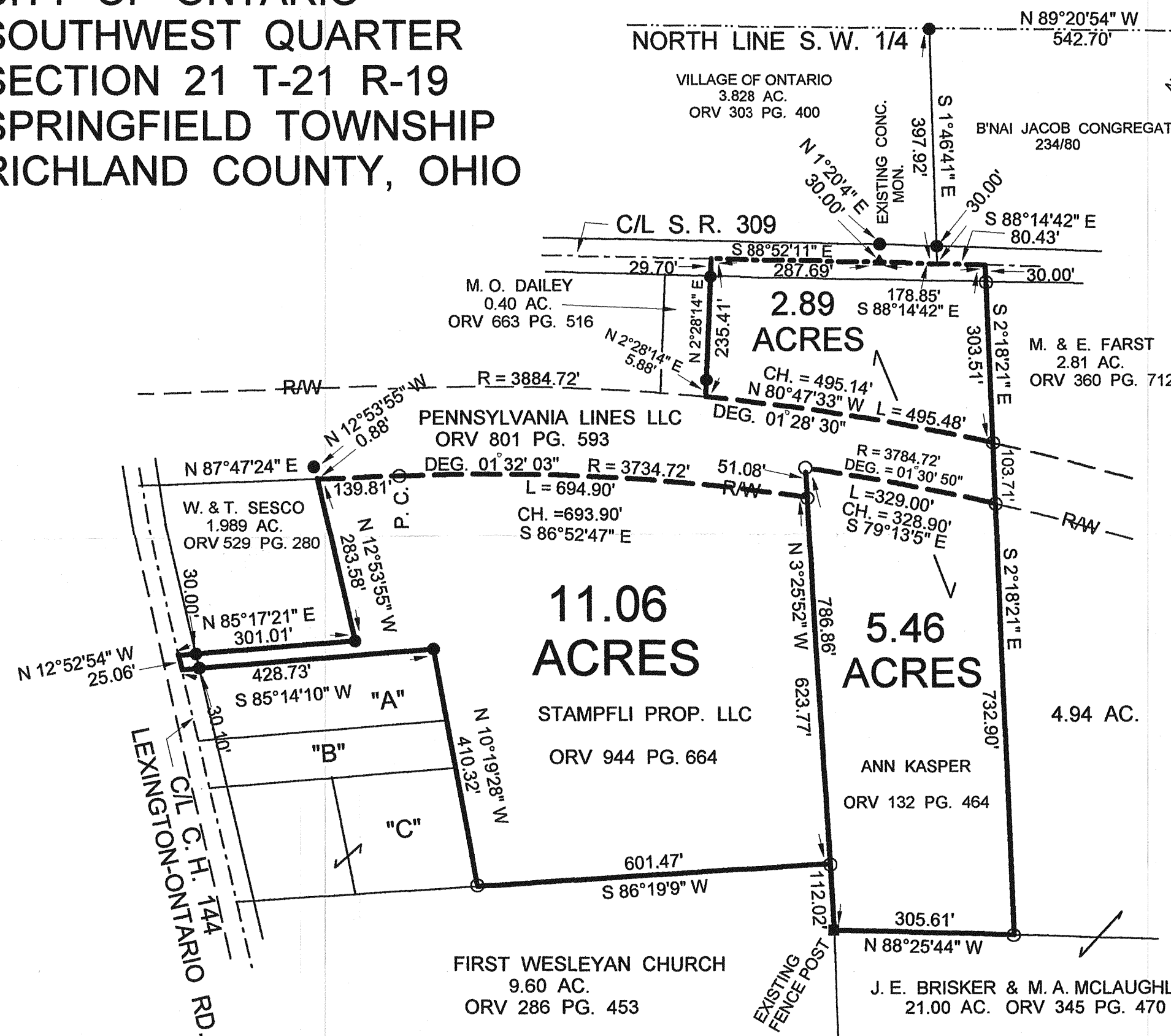


CITY OF ONTARIO
 SOUTHWEST QUARTER
 SECTION 21 T-21 R-19
 SPRINGFIELD TOWNSHIP
 RICHLAND COUNTY, OHIO



BASIS OF BEARINGS:
 ASSUMED

LEGEND:

- - 5/8 INCH REBAR W/CAP
 STAMPED "PS 7016" SET
- - EXISTING IRON PIN


NEW SPLIT
 RICHLAND COUNTY
 TAX MAP OFFICE
 INITIAL DATE
 J. 9.27.01

NEW SURVEY
 OF EXISTING PARCEL
 RICHLAND COUNTY
 TAX MAP OFFICE
 INITIAL DATE
 J. 9.27.01

"A" = B. & G. SESCO
 0.858 AC.
 739/351

"B" = M. & S. ARNOLD
 0.80 AC.
 ORV 165 PG. 55

"C" = J. & S. OBERLIN
 1.00 AC.
 ORV 784 PG. 550


 STEVEN H. RIEDEL
 OHIO SURVEYOR 7016
 AUGUST 13, 2001
 RSP21SW

