

N. W. 1/4 SEC. 3
 N. E. 1/4 SEC. 4
 T-22 R-19
 JACKSON TOWNSHIP
 RICHLAND COUNTY, OHIO

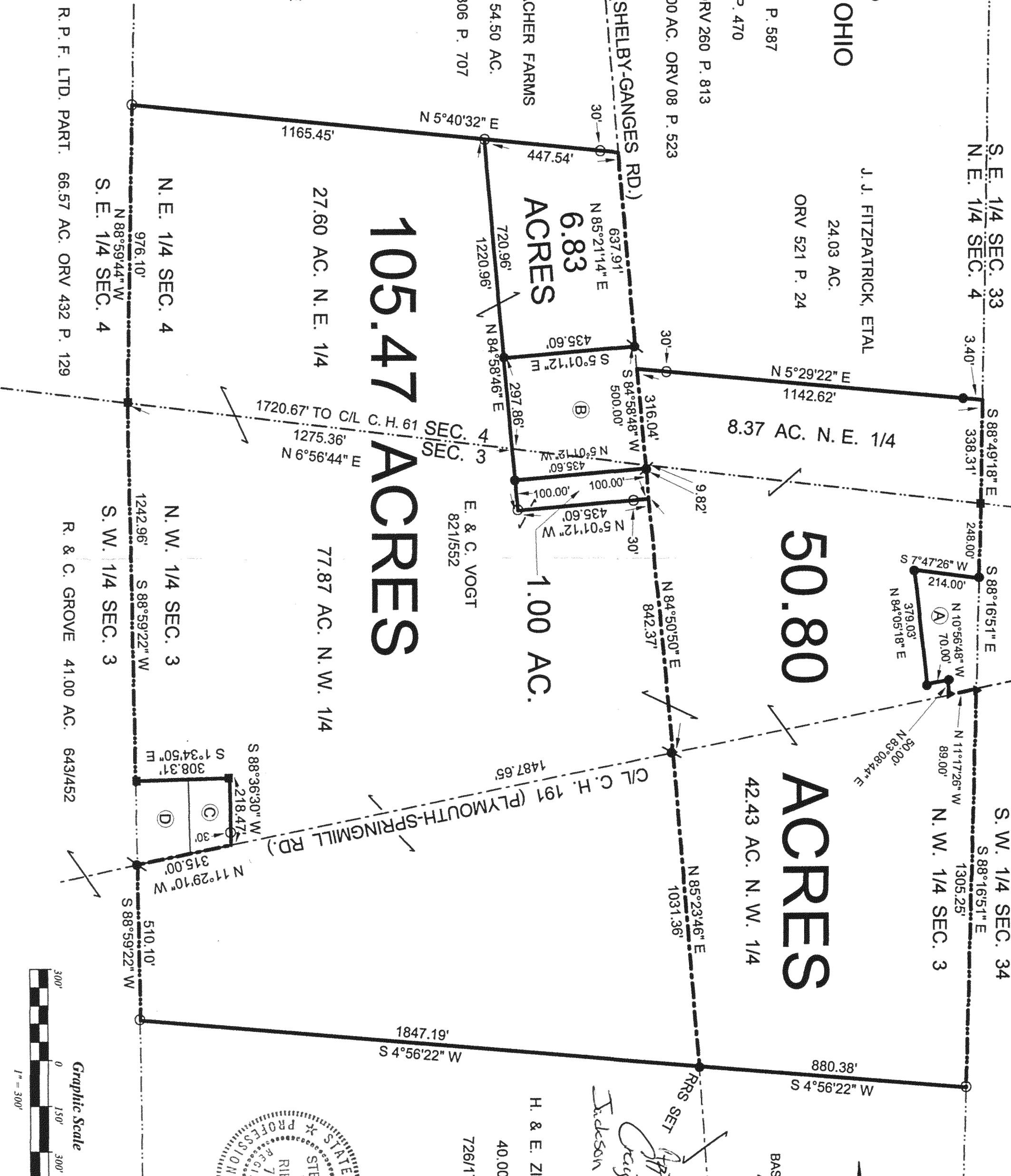
A = H. M. MYERS 1.597 AC. ORV 63 P. 587
 B = G. A. VOGT 4.00 AC. ORV 863 P. 470
 C = T. B. & C. S. REESE 0.70 AC. ORV 260 P. 813
 D = D. NEUMYER & A. FOSTER 1.00 AC. ORV 08 P. 523

J. J. FITZPATRICK, ETAL
 24.03 AC.
 ORV 521 P. 24

SCHUMACHER FARMS
 PT. 54.50 AC.
 ORV 306 P. 707

LEGEND:
 ○ - 5/8 INCH REBAR W/CAP
 STAMPED "PS 7016" SET
 ● - EXISTING IRON PIN
 ⚡ - EXISTING RAILROAD SPIKE
 ▲ - EXISTING SURVEY NAIL
 ■ - EXISTING FENCE POST

STEVEN H. RIEDEL
 OHIO SURVEYOR 7016
 MARCH 08, 2001
 RJA3NW



105.47 ACRES

50.80 ACRES

42.43 AC. N. W. 1/4

1.00 AC.

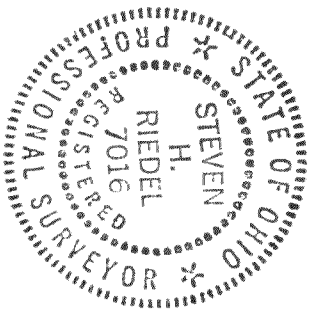
27.60 AC. N. E. 1/4

77.87 AC. N. W. 1/4

BASIS OF BEARINGS:
 ASSUMED

H. & E. ZIMMERMAN
 40.00 AC.
 726/170

NEW SPLIT
 RICHLAND COUNTY
 TAX MAP OFFICE
 INITIAL: HLZ
 DATE: 6-14-07



NEW SURVEY
 OF EXISTING PARCEL
 RICHLAND COUNTY
 TAX MAP OFFICE
 INITIAL: HLZ
 DATE: 6-14-07

