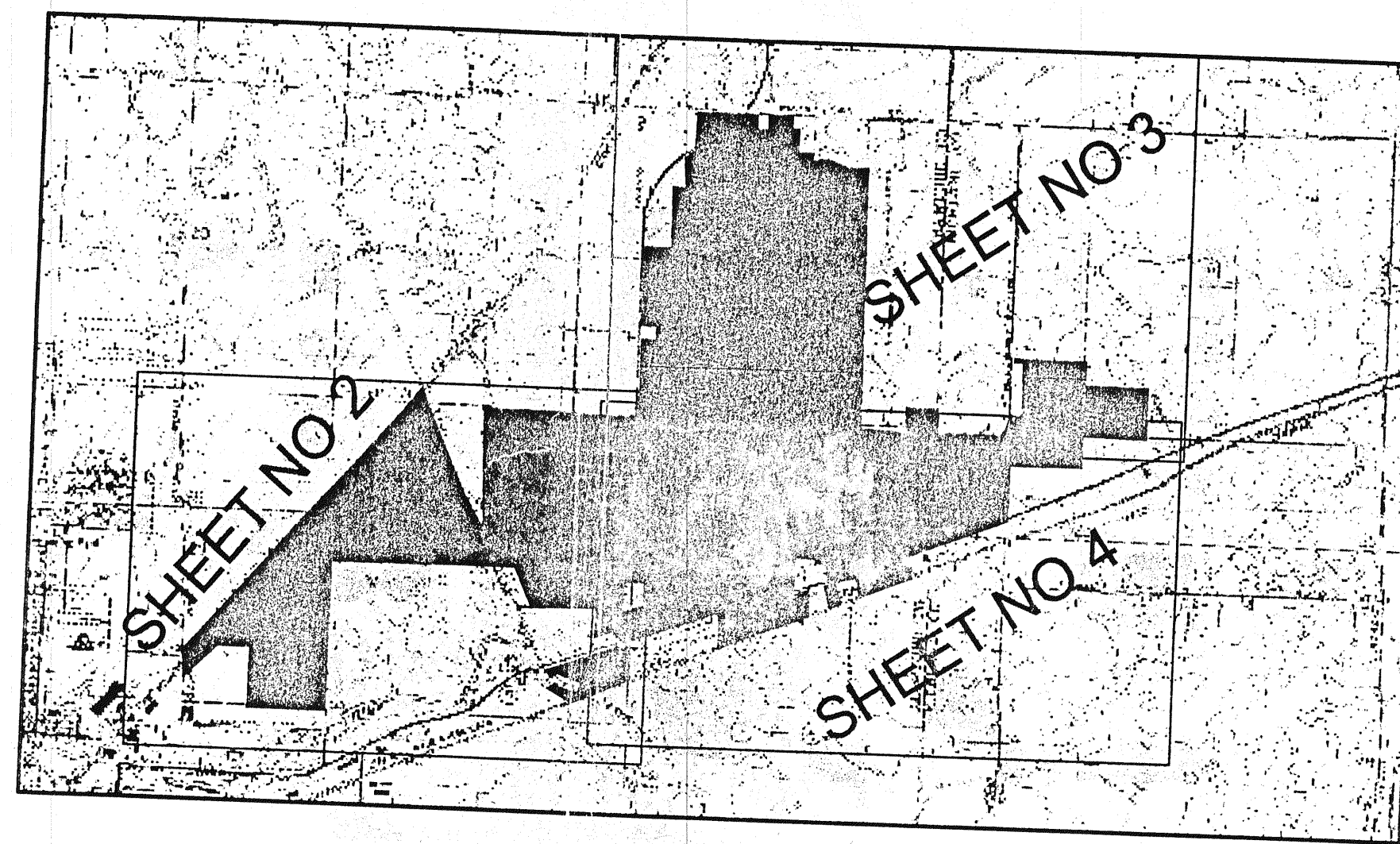


ADJOINING OWNERS

- | | |
|--|--|
| 13 R.B. & M.E. SIMMONS
D.B. 417, PG. 414 | 72 C.H. SWALLEY
D.B. 424, PG. 168 |
| 14 B.M. LEPLEY
D.B. 460, PG. 542 | 73 R.N. & M.L. JACOBS
D.B. 294, PG. 422 |
| 16 C.J. SNYDER
D.B. 475, PG. 60 | 74 T.E. & R.A. SAYERS
D.B. 460, PG. 119 |
| 50 GALION INDUSTRIAL PARK
D.B. 445, PG. 196 | 75 C.M. & A.E. BRITTON
D.B. 412, PG. 633
D.B. 431, PG. 825 |
| 51 A.L. & B.A. JONES
D.B. 473, PG. 143 | 76 QUALITY TELECOMMUNICATIONS, INC.
D.B. 470, PG. 889 |
| 52 ARVIN & GLEN PROPERTIES
D.B. 457, PG. 471 | 80 K.R. & K.R. WATTS
D.B. 442, PG. 954 |
| 53 L.D. & R.J. SKILLICORN
D.B. 436, PG. 289 | 81 P.J. DZUGAN
D.B. 476, PG. 676 |
| 54 CHERYL BAKER
D.B. 479, PG. 915 | 82 E.B. GROOS
D.B. 312, PG. 111
D.B. 319, PG. 633 |
| 58 FAE NOE
D.B. 283, PG. 242
D.B. 440, PG. 839 | 83 J. & M.R. HAINES
D.B. 439, PG. 874 |
| 56 S.K. BOARDMAN
D.B. 472, PG. 686 | 84 CRESTLINE CHURCH OF CHRIST
D.B. 329, PG. 700 |
| 57 D.E. & M.F. KIESEL HORST
D.B. 469, PG. 399 | 85 V.L. & E.R. TRENT
D.B. 455, PG. 226 |
| 58 V. & C. TACKETT
D.B. 474, PG. 560 | 86 C. & C. WHEELER
D.B. 510, PG. 254 |
| 59 FIVE HANDICAP, INC.
D.B. 469, PG. 851 | 87 T.E. HARRIS
D.B. 465, PG. 457 |
| 60 R.A. JONES
D.B. 384, PG. 602
D.B. 405, PG. 43 | 88 M.V. CLAYBAUGH
D.B. 323, PG. 437 |
| 61 G.S. POFFENBAUGH &
B.A. JOHNSON
D.B. 445, PG. 121 | 89 T.E. SMITH
D.B. 453, PG. 668 |
| 62 W.E. PRY
D.B. 492, PG. 230 | 90 T.H. & C.V. PAWSEY
D.B. 389, PG. 179 |
| 63 S.A. REEDER &
M. MAYNARD
D.B. 470, PG. 873 | 91 N.G. & L.M. DOWELL
D.B. 370, PG. 167
D.B. 409, PG. 960 |
| 64 W.R. & J.M. ANDERSON
D.B. 308, PG. 239
D.B. 314, PG. 176
D.B. 337, PG. 516 | 92 L.B. HUGHES
D.B. 195, PG. 258 |
| 65 B.L. LOGAN
D.B. 396, PG. 767 | 93 P.A. TUCKER
D.B. 476, PG. 105 |
| 66 J.W. COLLIER
D.B. 396, PG. 600 | 94 D.R. & D.M. SHUPP
D.B. 451, PG. 685 |
| 67 J.L. & L.F. HOVERLAND
D.B. 363, PG. 481 | 95 H.L. & C.J. MCCABE
D.B. 410, PG. 170 |
| 68 V.L. & C.J. DUFFNER
D.B. 295, PG. 348 | 96 M. DEEMS
D.B. 464, PG. 677 |
| 69 T.A. GROCHWALSKI
D.B. 445, PG. 303 | |
| 71 W.T. COTTER
D.B. 402, PG. 521
D.B. 473, PG. 198 | |



SITE LOCATION & INDEX OF SHEETS

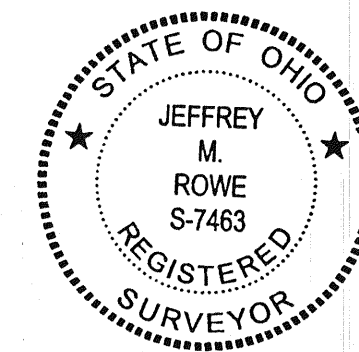
NOTES

- ALL IRON PINS SET ARE 5/8" x 30" LONG REINFORCING RODS WITH YELLOW PLASTIC CAPS STAMPED "MAKEEVER AND ASSOC." UNLESS OTHERWISE NOTED.
- THE BEARINGS SHOWN HEREON ARE BASED ON THE OHIO STATE PLANE GRID, NORTH ZONE, ESTABLISHED USING NAD 83 STATE PLANE COORDINATES DERIVED FROM A GPS SURVEY PERFORMED IN 1999 BY MAKEEVER AND ASSOCIATES, INC.

SURVEYOR'S STATEMENT

WE HEREBY STATE TO THE CITY OF GALION, OHIO THAT THE DRAWING HEREIN IS REPRESENTATIVE OF AN ACTUAL SURVEY PERFORMED IN MARCH, 1999, BY MYSELF OR UNDER MY DIRECT SUPERVISION AND THAT ALL INFORMATION IS TRUE AND CORRECT TO THE BEST OF MY KNOWLEDGE AND BELIEF.

Jeffrey M. Rowe
JEFFREY M. ROWE, P.S.
PROFESSIONAL SURVEYOR NO. 7463
DATE: 01-10-01



May 18, 2001
TRANSFERRED
JACK HEINER
COUNTY AUDITOR

TRANSFER APPROVED
RICHLAND COUNTY
TAX MAP
DATE: 5-18-01

200100009627
Filed for Record in
RICHLAND COUNTY, OH
SARAH H. DAVIS
05-18-2001 10:25 AM
PLAT 43.20
OR Book 28 Page 30 - 30
200100009627
ELAINE KEIFER TAX MAP

DESCRIPTION

SITUATED IN THE STATE OF OHIO, COUNTY OF CRAWFORD, TOWNSHIPS OF POLK AND JACKSON, BEING PART OF SECTIONS 21, 22, 27, 28 AND 29, TOWNSHIP 20 NORTH, RANGE 20 WEST AND PART OF RICHLAND COUNTY, TOWNSHIP OF SANDUSKY, BEING PART OF SECTIONS 23 AND 26, TOWNSHIP 20 NORTH, RANGE 20 WEST.

PARTIAL LIST OF AFFECTED ANNEXATION OWNERS
SMALL PARCELS ARE LISTED BELOW - LARGE PARCELS ARE LISTED INDIVIDUALLY ON SHEETS 2, 3, AND 4.

- | | |
|--|---|
| 1 PENN CENTRAL
D.B. 110, PG. 612
3.941 AC. (D)
0.060 AC. (D) 0.008 AC. (PRO) | 25 J.R. BRIGHT AGENCY
D.B. 480, PG. 199
100' FRONTAGE 180' DEPTH
100' FRONTAGE 180' DEPTH |
| 2 P.S. & A. PALUGA
D.B. 406, PG. 321
1.085 AC. (D) 0.102 AC. (PRO) | 26 F.J. KOHLS, JR.
D.B. 463, PG. 102
100' FRONTAGE 180' DEPTH
100' FRONTAGE 180' DEPTH |
| 3 MOSETTA SLUSHER
D.B. 477, PG. 238
0.91 AC. (D) 0.176 AC. (PRO) | 27 W.A. II & L.A. KEESEY
D.B. 448, PG. 914
100' FRONTAGE 180' DEPTH
100' FRONTAGE 180' DEPTH |
| 4 J.A. PALUGA
D.B. 422, PG. 206
2.273 AC. (D) 0.134 AC. (PRO)
0.130 AC. (D)
0.256 AC. (D)
0.121 AC. (D) | 28 K.J. BARTH, ETAL
D.B. 478, PG. 70
100' FRONTAGE 180' DEPTH
100' FRONTAGE 180' DEPTH |
| 5 N. JONES
D.B. 470, PG. 526
0.372 AC. (D) 0.069 AC. (PRO)
3.711 AC. (D) 0.159 AC. (PRO) | 30 T.W. & C.J. BRITTON
D.B. 390, PG. 448
D.B. 393, PG. 292
100' FRONTAGE 180' DEPTH
100' FRONTAGE 180' DEPTH |
| 6 B.R. & J.S. RIGGINS
D.B. 445, PG. 914
1.403 AC. (D) 0.093 AC. (PRO) | 31 T.W. & C.J. BRITTON
D.B. 389, PG. 57 & 59
100' FRONTAGE 180' DEPTH
100' FRONTAGE 180' DEPTH |
| 7 W. & D.J. JONES
D.B. 472, PG. 302
1.214 AC. (D) 0.103 AC. (PRO) | 32 R.E. MORROW
D.B. 257, PG. 74
D.B. 274, PG. 506
100' FRONTAGE 180' DEPTH |
| 8 CITY OF GALION, OHIO
D.B. 421, PG. 103
0.68 AC. (D) 0.064 AC. (PRO)
1.27 AC. (D) 0.125 AC. (PRO)
0.61 AC. (D) 0.059 AC. (PRO) | 33 R.S. DEAN, JR.
D.B. 432, PG. 681
100' FRONTAGE 180' DEPTH |
| 9 G.C.S. AIR SERVICE, INC.
D.B. 456, PG. 79
D.B. 473, PG. 207
1.229 AC. (D) 0.121 AC. (PRO)
2.000 AC. (D) 0.192 AC. (PRO) | 34 H.W. & P.Y. KEIB
D.B. 394, PG. 765
100' FRONTAGE 180' DEPTH
100' FRONTAGE 180' DEPTH |
| 10 CITY OF GALION, OHIO
D.B. 426, PG. 537
D.B. 422, PG. 217
D.B. 418, PG. 87
1.920 AC. (D) 0.382 AC. (PRO)
1.366 AC. (D) 0.106 AC. (PRO)
1.004 AC. (D) 0.082 AC. (PRO)
0.479 AC. (D) 0.041 AC. (PRO)
1.070 AC. (D) 0.082 AC. (PRO) | 35 P.S. MORALES
D.B. 331, PG. 170
0.59 AC. (D) 0.092 AC. (PRO) |
| 11 T.W. & C. BRITTON
D.B. 308, PG. 161
1.49 AC. (D) 0.168 AC. (PRO) | 36 CRESTLINE COMMUNITY
BAPTIST CHURCH
D.B. 461, PG. 536
0.597 AC. (D) 0.092 AC. (PRO)
2.583 AC. (D) 0.092 AC. (PRO)
1.170 AC. (D) 0.121 AC. (PRO)
2.320 AC. (D) |
| 12 R.R. & P.A. DENNEY
D.B. 365, PG. 609
0.884 AC. (D) 0.096 AC. (PRO) | 37 S.A. ROWAN
D.B. 459, PG. 161
1.72 AC. (D) 0.034 AC. (PRO) |
| 13 B.C.K. COMPANY
D.B. 463, PG. 749
4.03 AC. (D) 0.200 AC. (PRO) | 38 J.A. & C.M. & B.A. KIENE
D.B. 414, PG. 833
D.B. 470, PG. 853
0.982 AC. (D) 0.193 AC. (PRO) |
| 14 E. CARTER
D.B. 472, PG. 980
100' FRONTAGE 180' DEPTH | 39 R.H. COZAD
D.B. 414, PG. 117
0.600 AC. (D) 0.096 AC. (PRO) |
| 15 D.W. ANDERSON
D.B. 424, PG. 18
100' FRONTAGE 180' DEPTH | 40 GREENBRIER INVESTMENTS, INC.
D.B. 460, PG. 902
1.367 AC. (C) 0.340 AC. (PRO) |
| 16 J.P. HUNTER
D.B. 434, PG. 697
100' FRONTAGE 180' DEPTH | 41 N. JONES
D.B. 468, PG. 597
1.257 AC. (D) 0.075 AC. (PRO)
2.067 AC. (D) |
| 17 K.A. & D.J. NESS
D.B. 450, PG. 454
100' FRONTAGE 180' DEPTH | 42 NELSON JONES, TRUSTEE
D.B. 479, PG. 871
0.60 AC. (D) 0.077 AC. (PRO) |
| 18 R.E. & R. ROWAN
D.B. 402, PG. 863
100' FRONTAGE 180' DEPTH
100' FRONTAGE 180' DEPTH | 43 T.R. KNAPP
D.B. 433, PG. 165
0.59 AC. (D) 0.092 AC. (PRO) |
| 19 H.F. & L.J. YOUNG
D.B. 474, PG. 742
100' FRONTAGE 180' DEPTH | 44 R.E. & B.R. WILLIAMS-BYRD
D.B. 409, PG. 742
0.597 AC. (D) 0.093 AC. (PRO) |
| 20 D.L. DUFFNER
D.B. 381, PG. 698
100' FRONTAGE 180' DEPTH | 45 D.K. WISE
D.B. 473, PG. 913
0.606 AC. (D) 0.096 AC. (PRO) |
| 21 S.A. ROWAN
D.B. 403, PG. 385
100' FRONTAGE 180' DEPTH | |

ACREAGE SUMMARY

LOTS	1336.170 ACRES
R/W	26.301 ACRES
TOTAL	1362.471 ACRES

RICHLAND COUNTY	
NW 1/4 SEC. 26	62.627 ACRES
SE 1/4 SEC. 23	22.052 ACRES
SW 1/4 SEC. 23	34.972 ACRES
TOTAL	119.651 ACRES

CRAWFORD COUNTY	
SW 1/4 SEC. 21	0.769 ACRES
NW 1/4 SEC. 22	105.876 ACRES
NE 1/4 SEC. 22	60.793 ACRES
SW 1/4 SEC. 22	151.366 ACRES
SE 1/4 SEC. 22	86.423 ACRES
NW 1/4 SEC. 27	158.783 ACRES
NE 1/4 SEC. 27	156.390 ACRES
SW 1/4 SEC. 27	62.934 ACRES
SE 1/4 SEC. 27	11.888 ACRES
NW 1/4 SEC. 28	115.426 ACRES
NE 1/4 SEC. 28	167.535 ACRES
SE 1/4 SEC. 28	54.863 ACRES
NE 1/4 SEC. 29	11.511 ACRES
SE 1/4 SEC. 29	98.263 ACRES
TOTAL	1242.820 ACRES

RICHLAND CO.	119.651 ACRES
CRAWFORD CO.	1242.820 ACRES
TOTAL	1362.471 ACRES

7:032
January 30, 2001
8:32 a.m.
Plat
Bk. 34 pg. 53-56
\$172.80
City of Galion

DESIGNED BY: JMR REVISIONS: 02-04-01 ENGINEERS * SURVEYORS MAKEEVER