

SEE SHEET 3 OF 4

LINE DATA

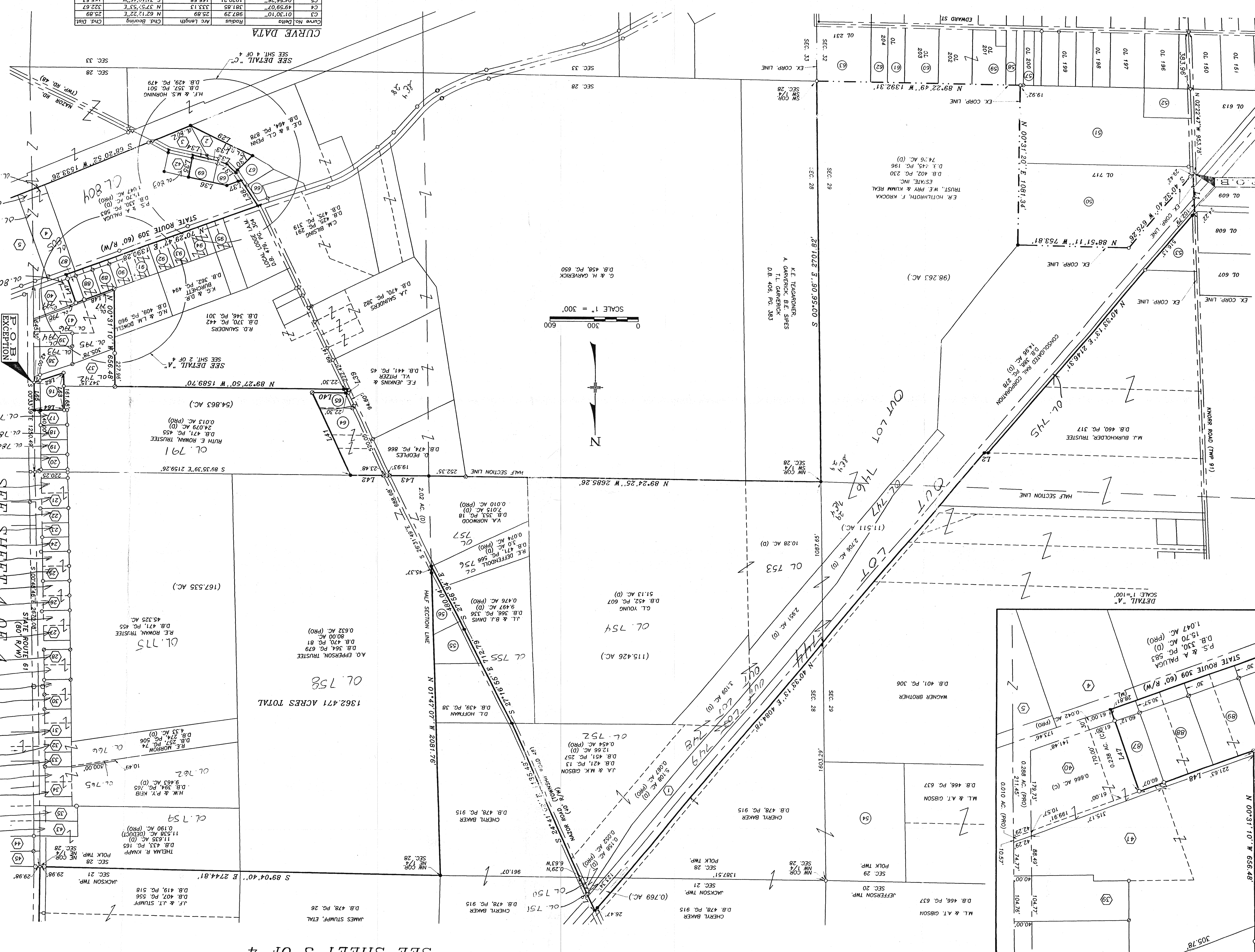
NUMBER	DIRECTION	DISTANCE
L1	N 02°22'47" W	271.76
L2	S 08°46'47" E	249.86
L3	S 01°14'07" W	249.41
L4	S 01°14'07" W	249.41
L5	N 88°53'07" E	19.39
L6	S 00°40'07" E	388.24
L7	N 88°03'07" E	217.18
L8	S 00°00'58" W	101.75
L9	S 82°53'01" E	274.97
L10	N 88°53'07" E	181.15
L11	N 88°51'27" E	247.20
L12	N 82°51'27" E	180.25
L13	S 01°14'07" W	249.41
L14	S 00°40'32" E	45.64
L15	N 47°48'29" E	278.33
L16	N 89°31'28" W	204.00
L17	N 00°40'32" E	30.00
L18	S 19°39'19" E	318.15
L19	N 17°24'30" W	303.84
L20	S 15°48'57" E	335.63
L21	S 15°48'57" E	335.63
L22	S 68°20'52" W	1538.26
L23	N 13°51'58" W	348.88
L24	S 00°29'57" E	397.30
L25	S 07°39'00" W	530.48
L26	N 11°58'25" W	530.48
L27	S 70°39'00" W	449.16
L28	S 12°34'33" E	610.83
L29	N 64°12'54" W	484.40
L30	S 47°48'08" E	29.47
L31	S 69°42'09" E	56.40
L32	S 76°54'09" E	72.00
L33	S 77°35'09" E	109.00
L34	S 77°35'09" E	150.00
L35	N 11°50'56" E	265.52
L36	N 77°35'09" W	265.52
L37	S 89°32'51" W	104.04
L38	N 82°27'03" W	208.83
L39	N 25°45'07" W	27.88
L40	S 89°27'50" E	251.21
L41	N 25°45'07" W	614.58
L42	N 89°35'39" W	250.66
L43	N 89°35'39" W	250.66
L44	N 00°27'14" E	217.60
L45	S 89°24'11" E	197.50
L46	N 00°54'53" E	350.45
L47	N 18°32'00" W	200.00
L48	S 70°39'47" W	272.80
L49	S 54°01'02" W	60.00
L50	S 54°01'02" W	269.75
L51	N 22°31'02" E	230.00
L52	N 00°08'36" W	32.50
L53	N 81°11'51" W	333.71
L54	S 01°27'26" E	600.27
L55	N 73°38'59" E	306.01
L56	S 71°32'28" W	210.00
L57	N 00°54'46" W	250.54
L58	N 89°25'14" E	200.54
L59	S 00°33'39" E	189.73
L60	N 73°38'59" E	44.90
L61	N 03°47'40" W	265.00
L62	N 73°33'36" W	274.00

LEGEND

- (D) DEED
- (C) CALCULATED
- (M) MEASURED
- (PRO) PRESENT ROAD OCCUPIES

- FOUND
- SET
- IRON PIN
- RAILROAD SPIKE
- PK NAIL
- STONE
- FENCE CORNER POST
- CONCRETE MONUMENT
- IRON PIPE
- EXISTING CORPORATION LINE
- PROPOSED CORPORATION LINE

P.O.B. EXCEPTION



CURVE DATA

Curve No.	Radius	Arc Length	Chd. Bearing	Chd. Dist.
C3	01'30"10"	25.89	N 62°12'22" E	25.89
C4	49'59'07"	381.85	N 37°5'53" E	322.67
C5	04'56'26"	1920.21	S 71°56'49" W	165.53
C6	01'24'00"	40552.69	S 71°56'49" W	990.90

ENGINEERS \* SURVEYORS  
DESIGNED BY JMR  
REVISIONS: 02-04-001  
SCALE:  
ANNEXATION PLAT FOR:  
SHEET NO.

PLAT FOR RECORD IN  
RICHLAND COUNTY, OH  
SARAH M. DAVIS  
PLAT 43.20  
OR Book 68 Page 31 - 31