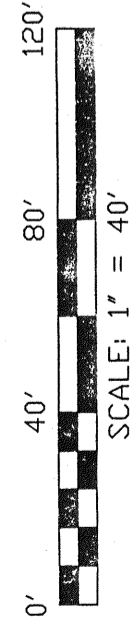
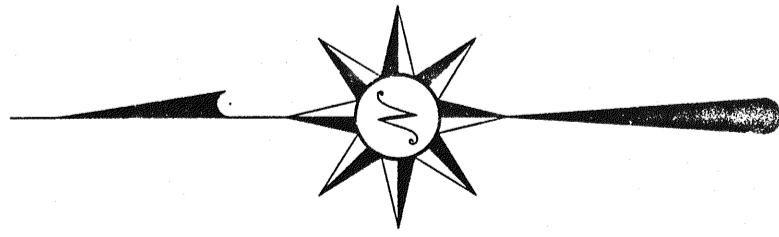


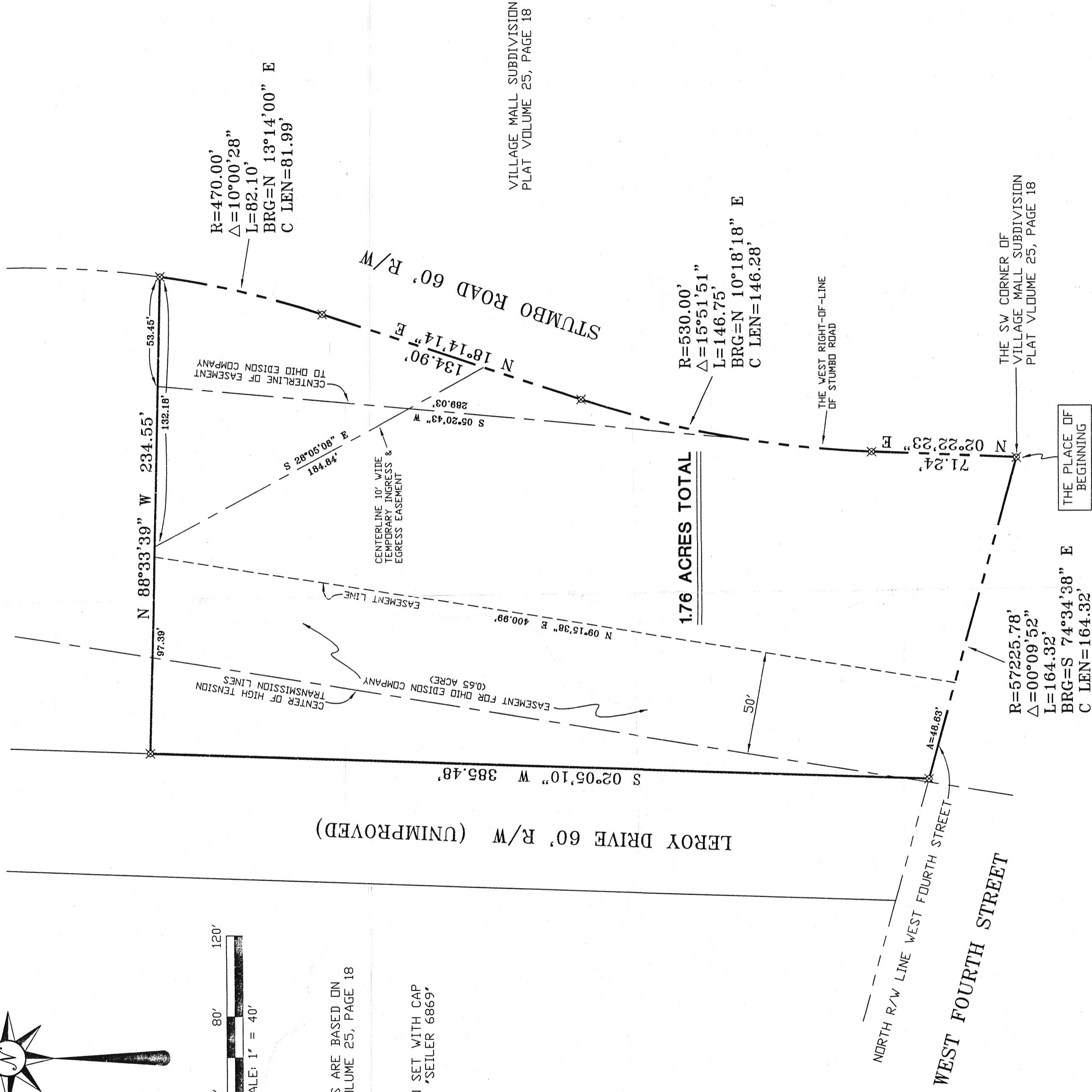
NORTH



BEARINGS ARE BASED ON
PLAT VOLUME 25, PAGE 18

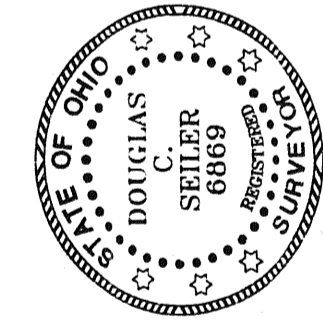
✕ IRON PIN SET WITH CAP
STAMPED 'SEILER 6869'

OHIO EDISON COMPANY
DEED VOLUME 415, PAGE 254



VILLAGE OF ONTARIO
APPROVED
DATE 5/24/00
ZONING INSPECTOR
Robert H. Huchel

SURVY PLAT FOR
McCREADY
PART SE QTR. SEC. 14, T-21, R-19
VILLAGE OF ONTARIO
RICHLAND COUNTY, OHIO
DATE: JULY 17, 2000
DICKMCCR
SCALE: 1"=40'



SURVEYED BY: DOUGLAS C. SEILER
PROFESSIONAL SURVEYOR #6869
52 1/2 NORTH MAIN STREET
MANSFIELD, OHIO 44902
(419) 525-3644
FAX (419) 525-3696

ASSAULT
TAX MAP APPROVED
DATE: 5/24/00