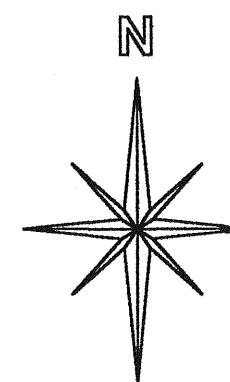
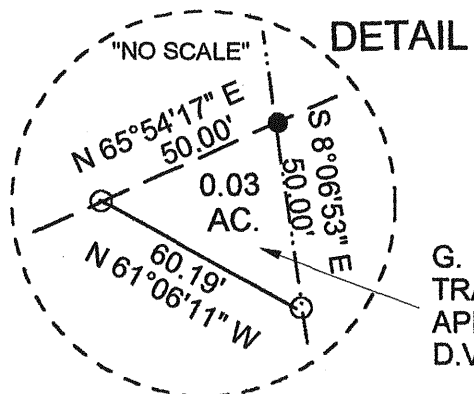
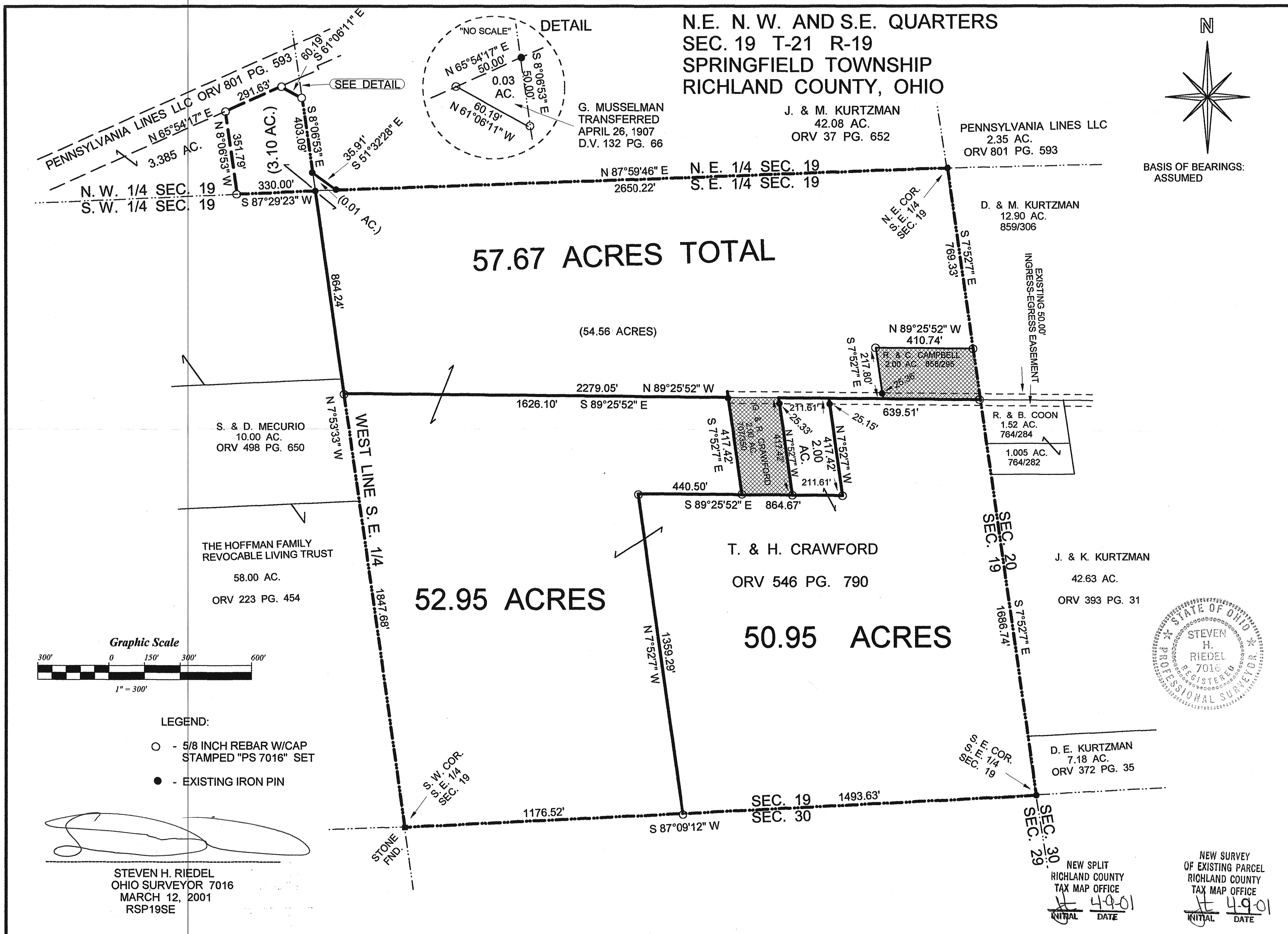


N.E. N.W. AND S.E. QUARTERS
 SEC. 19 T-21 R-19
 SPRINGFIELD TOWNSHIP
 RICHLAND COUNTY, OHIO



BASIS OF BEARINGS:
 ASSUMED



G. MUSSELMAN
 TRANSFERRED
 APRIL 26, 1907
 D.V. 132 PG. 66

J. & M. KURTZMAN
 42.08 AC.
 ORV 37 PG. 652

PENNSYLVANIA LINES LLC
 2.35 AC.
 ORV 801 PG. 593

D. & M. KURTZMAN
 12.90 AC.
 859/306

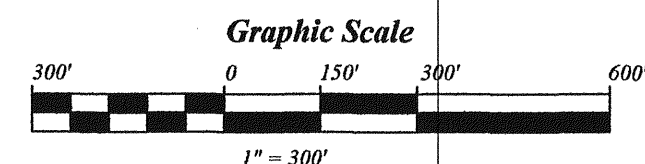
S. & D. MECURIO
 10.00 AC.
 ORV 498 PG. 650

THE HOFFMAN FAMILY
 REVOCABLE LIVING TRUST
 58.00 AC.
 ORV 223 PG. 454

T. & H. CRAWFORD
 ORV 546 PG. 790

J. & K. KURTZMAN
 42.63 AC.
 ORV 393 PG. 31

D. E. KURTZMAN
 7.18 AC.
 ORV 372 PG. 35



- LEGEND:
- - 5/8 INCH REBAR W/CAP STAMPED "PS 7016" SET
 - - EXISTING IRON PIN

[Signature]

STEVEN H. RIEDEL
 OHIO SURVEYOR 7016
 MARCH 12, 2001
 RSP19SE



NEW SPLIT
 RICHLAND COUNTY
 TAX MAP OFFICE
 INITIAL DATE
 H 4-9-01

NEW SURVEY
 OF EXISTING PARCEL
 RICHLAND COUNTY
 TAX MAP OFFICE
 INITIAL DATE
 H 4-9-01