

J. O. ROGERS ET AL.
O.R.V. 311, PAGE 711

J. & L. BALL
O.R.V. 446, PAGE 298

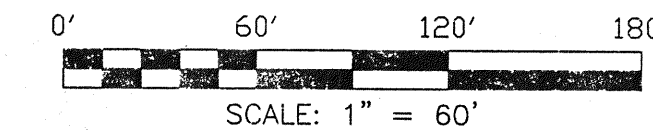
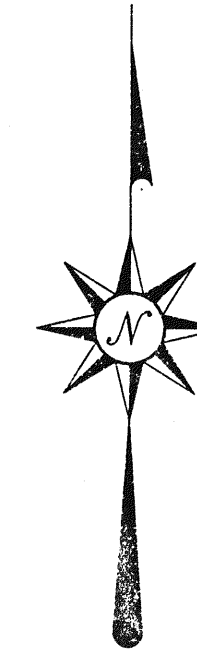
A. & B. SIEMER
VOLUME 873, PAGE 502

8.47 ACRES TOTAL

E. SELBY
VOLUME 262, PAGE 344

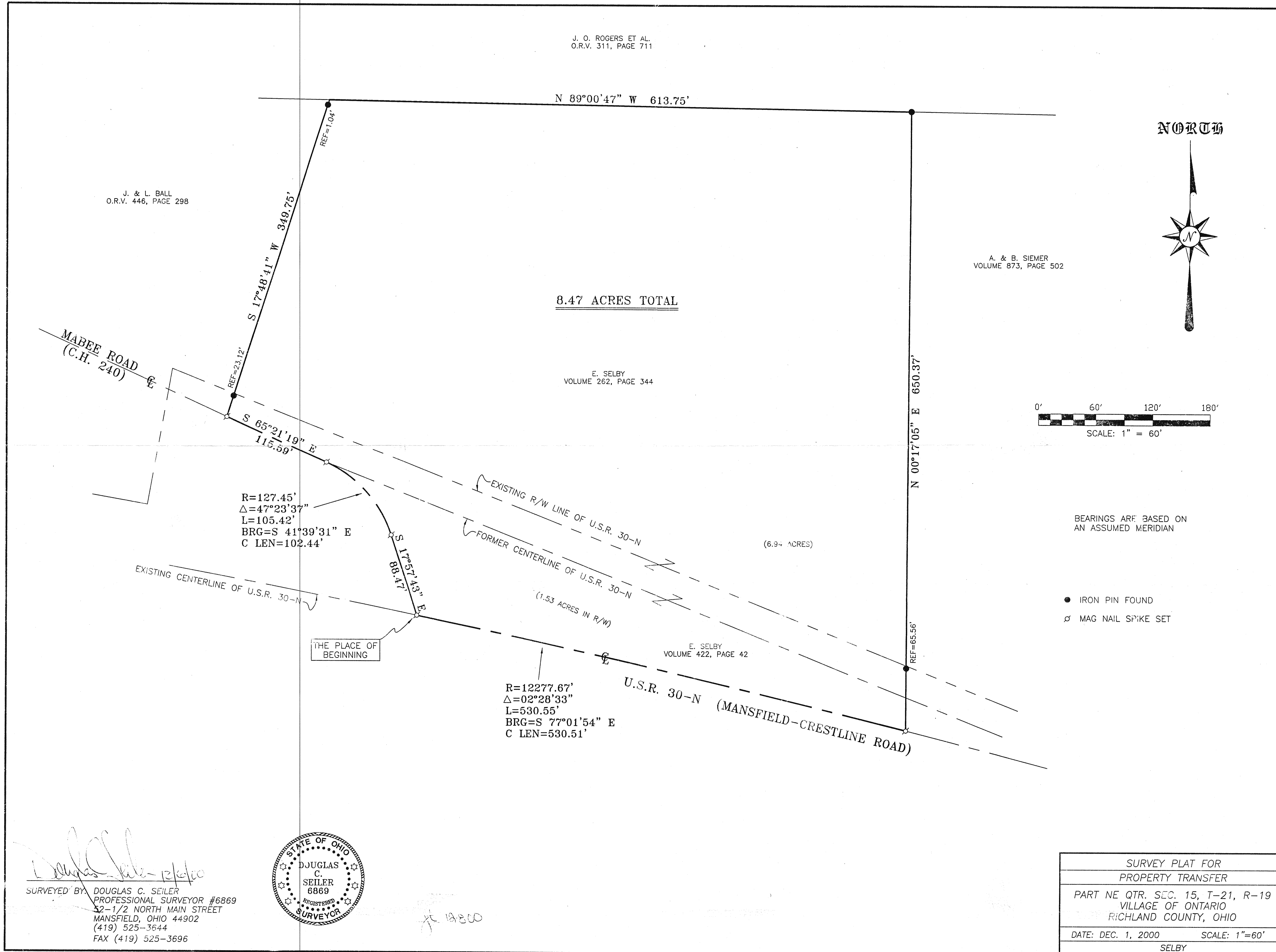
E. SELBY
VOLUME 422, PAGE 42

NORTH

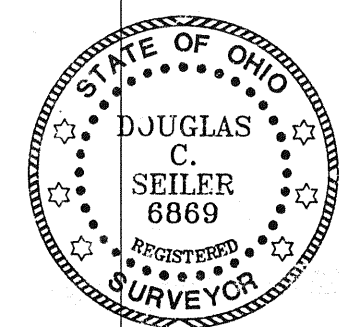


BEARINGS ARE BASED ON
AN ASSUMED MERIDIAN

- IRON PIN FOUND
- ⊕ MAG NAIL SPIKE SET



Douglas C. Seiler
 SURVEYED BY: DOUGLAS C. SEILER
 PROFESSIONAL SURVEYOR #6869
 52-1/2 NORTH MAIN STREET
 MANSFIELD, OHIO 44902
 (419) 525-3644
 FAX (419) 525-3696



12/1/00

SURVEY PLAT FOR	
PROPERTY TRANSFER	
PART NE QTR. SEC. 15, T-21, R-19	
VILLAGE OF ONTARIO	
RICHLAND COUNTY, OHIO	
DATE: DEC. 1, 2000	SCALE: 1"=60'
SELBY	