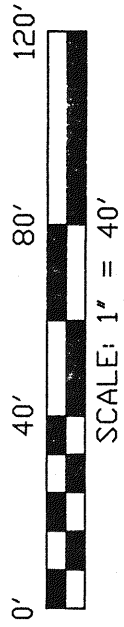
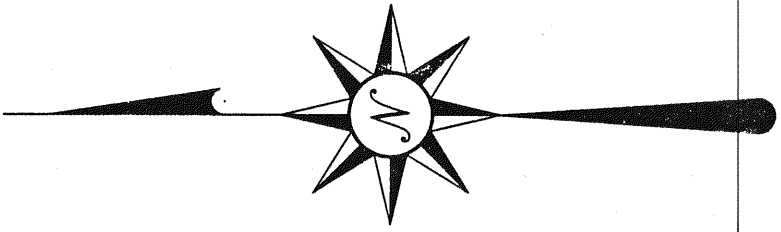


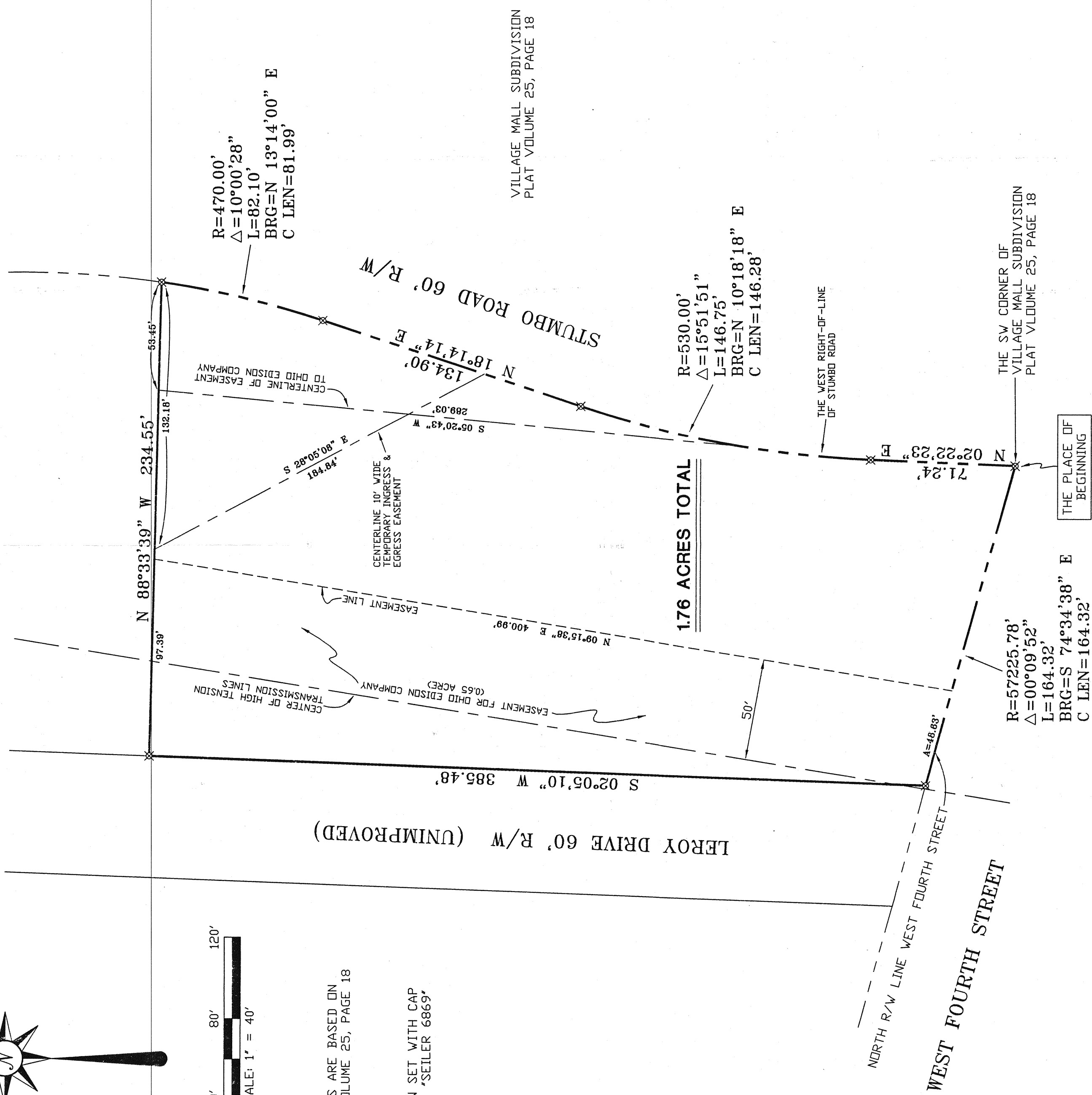
NORTH



BEARINGS ARE BASED ON
PLAT VOLUME 25, PAGE 18

✕ IRON PIN SET WITH CAP
STAMPED 'SEILER 6869'

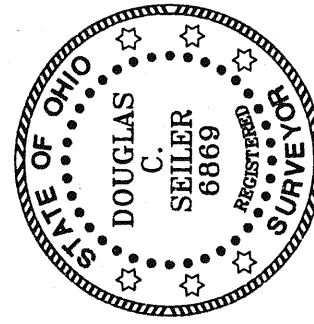
DHD EDISON COMPANY
DEED VOLUME 415, PAGE 254

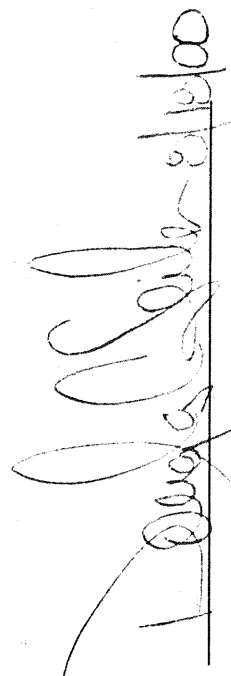




VILLAGE MALL SUBDIVISION
PLAT VOLUME 25, PAGE 18

1.76 ACRES TOTAL

THE PLACE OF
BEGINNING




 SURVEYED BY: DOUGLAS C. SEILER
 PROFESSIONAL SURVEYOR #6869
 52-1/2 NORTH MAIN STREET
 MANSFIELD, OHIO 44902
 (419) 525-3644
 FAX (419) 525-3696

VILLAGE OF ONTARIO
 APPROVED 
 DATE 5/24/00
 ZONING INSPECTOR


SURVEY PLAT FOR	
McCREADY	
PART SE QTR. SEC. 14, T-21, R-19 VILLAGE OF ONTARIO RICHLAND COUNTY, OHIO	
DATE: JULY 17, 2000	SCALE: 1"=40'
DICKMCCR	

NEW SPLIT
 TAX MAP APPROVED

 INITIAL DATE