

ANNEXATION TO THE CITY OF SHELBY
STEVE L. SCHAG AND SONJIA L. SCHAG
 PART OF THE NORTHEAST QUARTER SECTION 5
 TOWNSHIP TWENTY TWO (22N), RANGE NINETEEN (19W)
 SHARON TOWNSHIP, RICHLAND COUNTY, OHIO

PROPERTY DESCRIPTION
PARCEL "A"

Situated in the Township of Sharon, County of Richland, State of Ohio and being a part of the Northeast Quarter of Section 5, Township 22 North, Range 19 West, more particularly described as follows:

Commencing at an iron pipe found and accepted as marking the north east corner of said quarter; Thence, North 89 degrees 51 minutes 59 seconds West with the north line of said quarter, a distance of 1304.37 feet to an iron pin set, the place of beginning of the parcel herein described;

Thence, South 04 degrees 16 minutes 01 second West a distance of 122.00 feet to an iron pin set;

Thence, North 89 degrees 51 minutes 59 seconds West a distance of 160.00 feet to an iron pin set on the east line of Cleveland Street;

Thence, North 04 degrees 16 minutes 01 second East with said east line, a distance of 122.00 feet to an iron pin set on the north line of said quarter;

Thence, South 89 degrees 51 minutes 59 seconds East with said north line, a distance of 160.00 feet to the place of beginning, containing 0.45 of an acre, according to survey by Douglas C. Seiler, Professional Surveyor #6869 on August 23, 2000.

Iron pins set are 5/8" rods with caps stamped "SEILER 6869".

Bearings are based on an assumed meridian and are intended to be used for angular determination only.

PARCEL "B"

Situated in the Township of Sharon, County of Richland, State of Ohio and being a part of the Northeast Quarter of Section 5, Township 22 North, Range 19 West, more particularly described as follows:

Commencing at an iron pipe found and accepted as marking the northeast corner of said quarter; Thence, North 89 degrees 51 minutes 59 seconds West with the north line of said quarter, a distance of 1304.37 feet to an iron pin set; Thence, South 04 degrees 16 minutes 01 second West a distance of 122.00 feet to an iron pin set, the place of beginning of the parcel herein described;

Thence, North 89 degrees 51 minutes 59 seconds West a distance of 160.00 feet to an iron pin set on the east line of Cleveland Street;

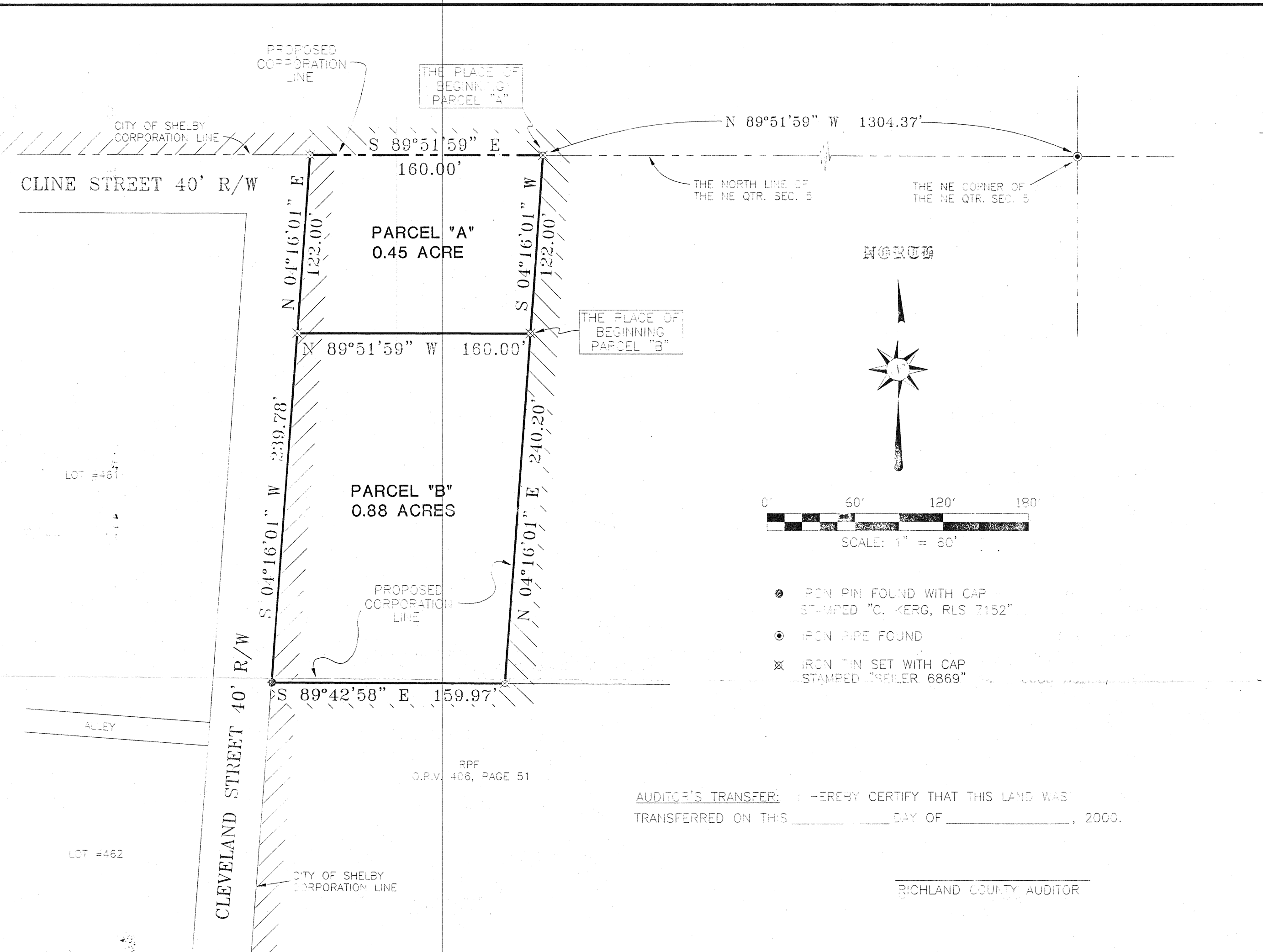
Thence, South 04 degrees 16 minutes 01 second West with said east line, a distance of 239.78 feet to an iron pin found;

Thence, South 89 degrees 42 minutes 58 seconds East a distance of 159.97 feet to an iron pin set;

Thence, North 04 degrees 16 minutes 01 second East a distance of 240.20 feet to the place of beginning, containing 0.88 of an acre, according to survey by Douglas C. Seiler, Professional Surveyor #6869 on August 23, 2000.

iron pins set are 5/8" rods with caps stamped "SEILER 6869".

Bearings are based on an assumed meridian and are intended to be used for angular determination only.



AUDITOR'S TRANSFER: I HEREBY CERTIFY THAT THIS LAND WAS TRANSFERRED ON THIS _____ DAY OF _____, 2000.

 RICHLAND COUNTY AUDITOR

COUNTY RECORDER: FILED FOR RECORD ON THIS _____ DAY OF _____, 2000. AT _____ RECORDED THIS _____ DAY OF _____, 2000, IN VOLUME _____, PAGE _____.

 RICHLAND COUNTY RECORDER

CITY OF SHELBY, OHIO ACCEPTANCE: THE COUNCIL OF THE CITY OF SHELBY, OHIO, IN REGULAR SESSION THIS _____ DAY OF _____, 2000, PASSED ORDINANCE NO. _____ TO EXTEND THE CORPORATION CITY LIMITS OF SAID CITY AS INDICATED ON THIS PLAT.

 CLERK OF COUNCIL

TAX MAP OFFICE APPROVAL: I HEREBY CERTIFY THAT THIS PLAT HAS BEEN APPROVED.
 DATE: _____, 2000

 TAX MAP DRAFTSPERSON

CITY ENGINEERS APPROVAL: I HEREBY APPROVE THIS PLAT.
 DATE: _____, 2000

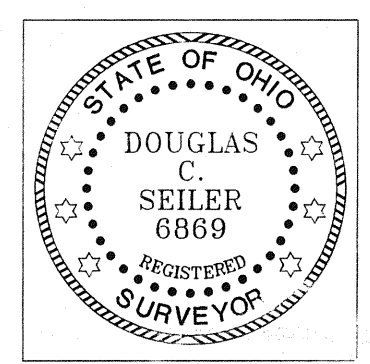
 SHELBY CITY ENGINEER

COUNTY ENGINEER'S RECOMMENDATION: I HEREBY CERTIFY THAT THE DESCRIPTION ON THE PETITION COINCIDES WITH THE DESCRIPTION ON THIS PLAT.
 DATE: _____, 2000

 RICHLAND COUNTY ENGINEER

COUNTY COMMISSIONER'S APPROVAL: I HEREBY CERTIFY THAT THIS ANNEXATION PLAT WAS DULY APPROVED BY THE BOARD OF COMMISSIONERS, RICHLAND COUNTY, STATE OF OHIO, AT ITS REGULAR MEETING HELD ON THE _____ DAY OF _____, 2000. RECORDED IN COMMISSIONERS JOURNAL VOLUME _____, PAGE _____

 COUNTY CLERK



Douglas C. Seiler
 Professional Surveyor #6869
 52 1/2 North Main Street
 Mansfield, Ohio 44902
 (+19) 525-3644