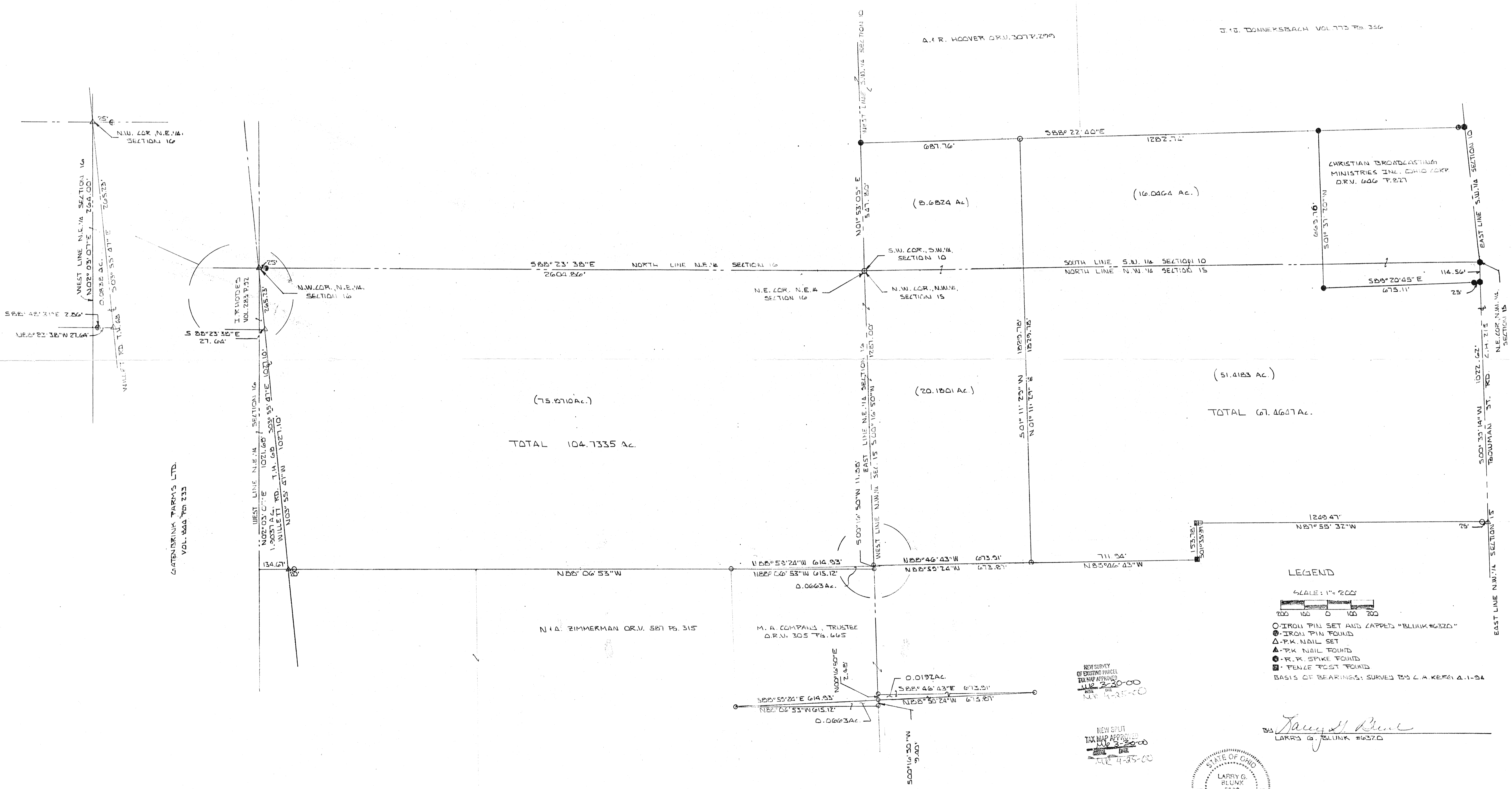


100-3012



GATENSINK FARMS LTD.
VOL. 844 PG. 733

WEST LINE N.E. 1/4 SECTION 16
N02°03'07"E 1021.60'
1.2037 AC. T.H. 60 503°55'41"E 100.10'
WILLET RD. T.H. 60 1021.10
N03°55'41"W 1021.10

IRVING HODGES
VOL. 283 PG. 22
S 82°23'32"E 27.64'
N.W. COR. N.E. 1/4 SECTION 16

TOTAL 104.7335 AC.

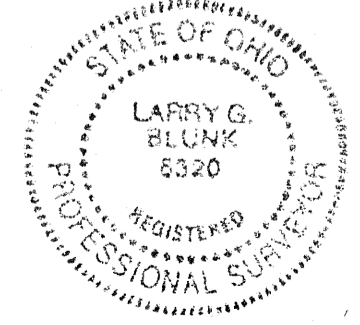
N 1/4 ZIMMERMAN D.R.V. 307 PG. 315

M. A. COMPANYS TRUSTEE
D.R.V. 305 PG. 665

0.0192 AC.
S 22°46'43"E 673.91'

NEW SURVEY OF EXISTING PARCEL TAX MAP APPROVED
MAY 2 2010
FILE 4-25-10

NEW SPLIT TAX MAP APPROVED
MAY 2 2010
FILE 4-25-10



Larry G. Blunk
LARRY G. BLUNK #6320

LEGEND

SCALE: 1" = 200'

- IRON PIN SET AND CAPPED "BLUNK #6320"
 - IRON PIN FOUND
 - △ P.K. NAIL SET
 - ▲ P.K. NAIL FOUND
 - ⊙ R.K. SPIKE FOUND
 - FENCE POST FOUND
- BASIS OF BEARINGS: SURVED BY L.A. KEFE A.1-24

PLAT OF SURVED LOCATED IN S.W. 1/4 SECTION 10, SECTION 15 AND N.E. 1/4 SECTION 16, TOWNSHIP RANGE 13, TOWNSHIP 2, RYLAND COUNTY		
SCALE: 1" = 200'	APPROVED BY: L.G.B.	DRAWN BY:
DATE: 3-27-2010		
FOR: R.E. DAWSON D.R.V. 313 PG. 361		
		DRAWING NO.