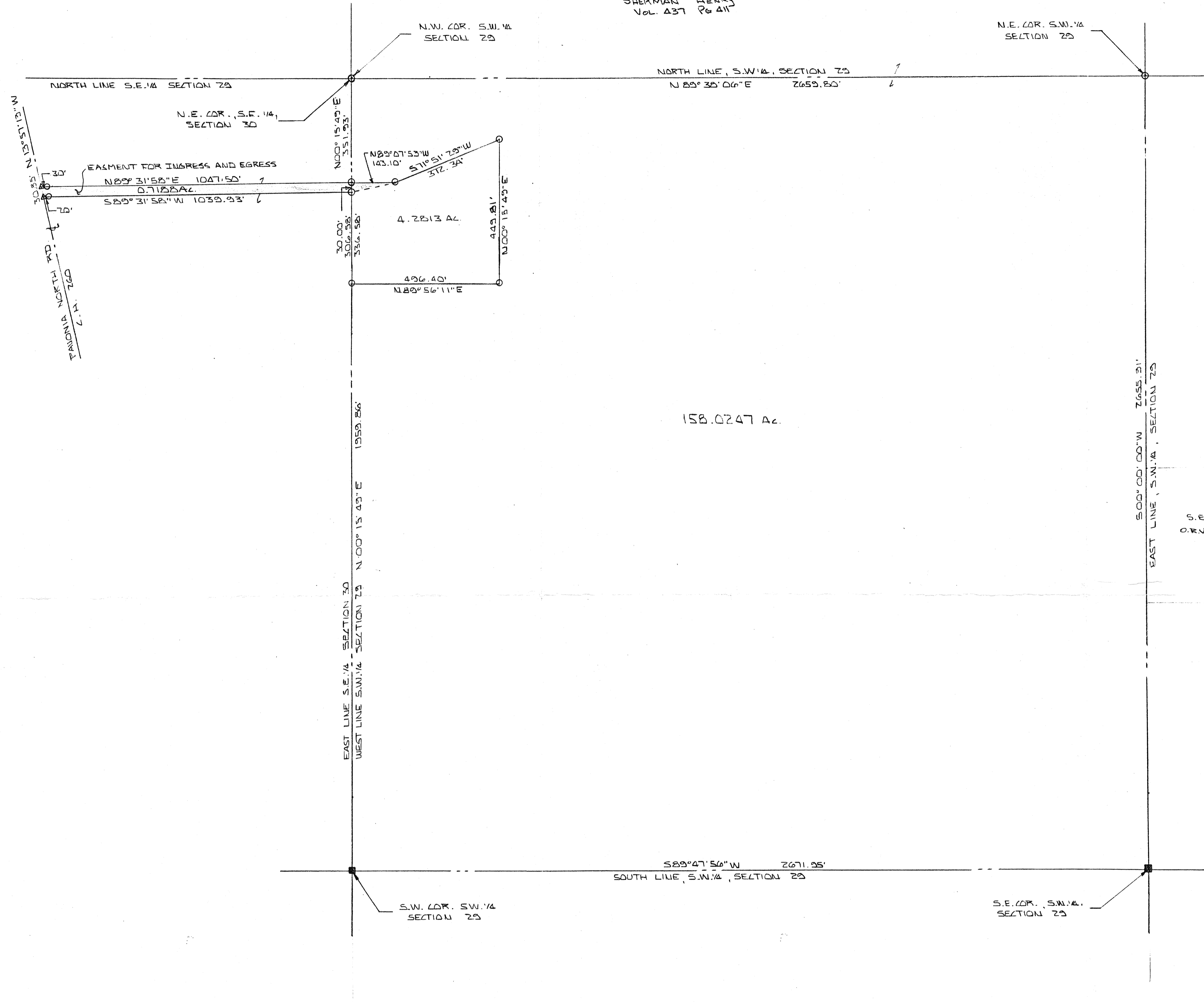


SHERMAN HENRY
Vol. 437 Pg 411

N.E. COR. S.W. 1/4
SECTION 29



D. H. Young
Vol. 702 Pg 273

SCALE 1" = 200'

S.E. ALLEY
O.R.V. 219 P. 151

0 - IRON PILL SET AND CAPPED
"BLINK # 6370"

Δ - P.K. NAIL SET

■ - CONC. MON FOUND

BASIS OF BEARINGS: SURVED BY
R.A. SANFORD 7-6-71
REVISED DEC 21, 1998

BY *Larry G. Blunk*
LARRY G. BLUNK #6370



R. B. MYERS
O.R.V. 423 P. 466

NEW SURVEY
TAX MAP APPROVED
DATE 12-14-98

NEW SPLIT
TAX MAP APPROVED
DATE 12-14-98

PLAT OF SURVEY LOCATED IN THE S.W. 1/4 SECTION 30, TOWNSHIP 24, RANGE 17, WEST RICHLAND COUNTY, OHIO.

SCALE: 1" = 200'	APPROVED BY L.G.B.	DRAWN BY D.R.
DATE: 12-14-98		

FOR SHERMAN HENRY

DRAWING NUMBER