

NORTHEAST QUARTER

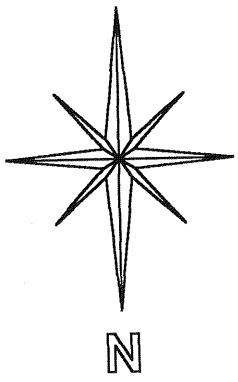
SECTION 35 T-20 R-19

TROY TOWNSHIP

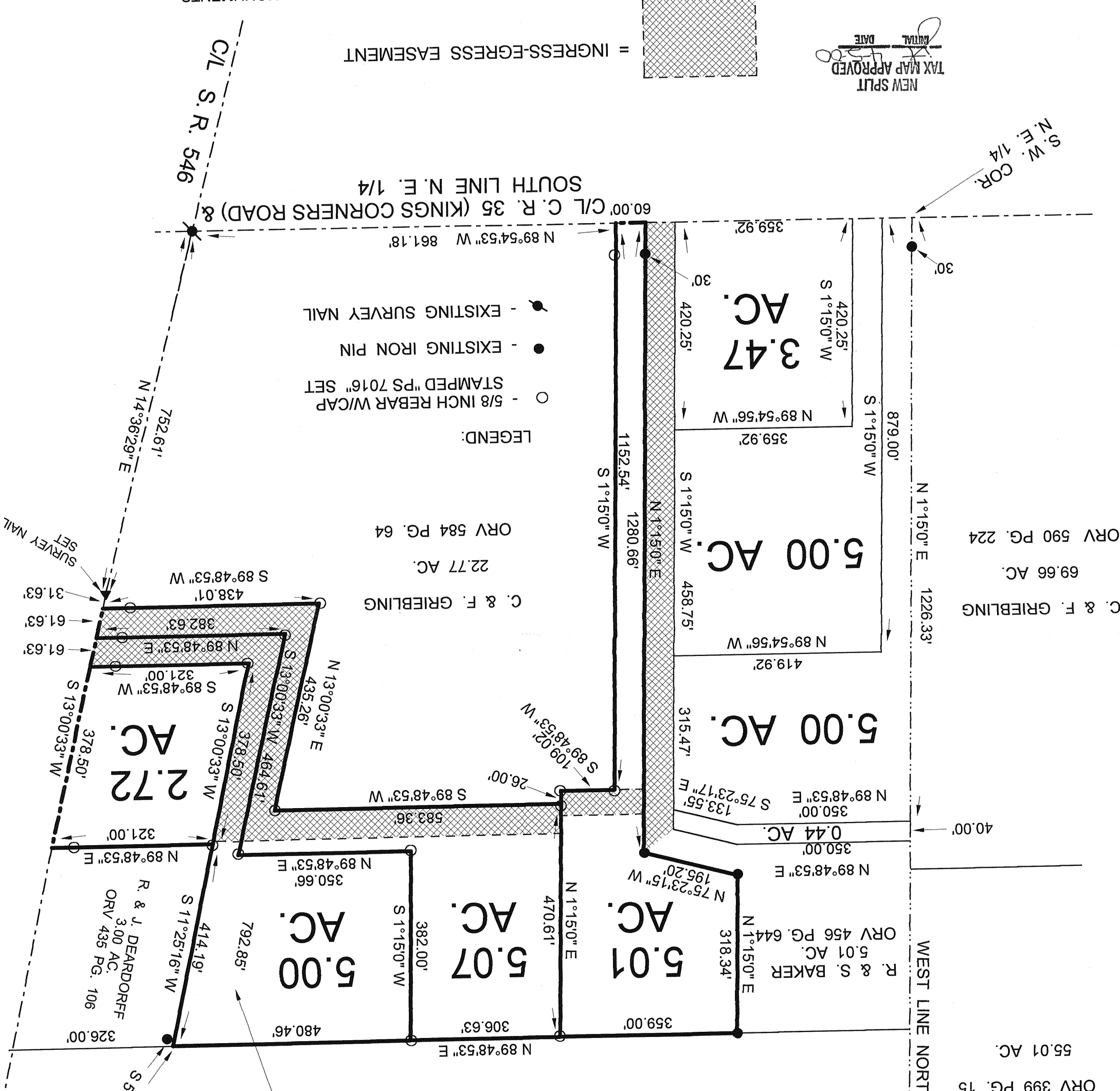
RICHLAND COUNTY

OHIO

BASIS OF BEARINGS:  
SURVEY INDEX H  
PAGE 59



NOTE: THIS PARCEL REVISED  
APRIL 03, 2000



- LEGEND:
- - 5/8 INCH REBAR W/CAP
  - - EXISTING IRON PIN
  - - EXISTING SURVEY NAIL

ORV 584 PG. 64  
22.77 AC.

C. & F. GRIEBLING

R. & J. DEARDORFF  
3.00 AC.  
ORV 435 PG. 106

5.07 AC.

5.01 AC.

R. & S. BAKER  
5.01 AC.  
ORV 456 PG. 644

5.00 AC.

5.00 AC.

3.47 AC.

J. P. REITER

ORV 399 PG. 15

55.01 AC.

R. & S. BAKER  
5.01 AC.  
ORV 456 PG. 644

WEST LINE NORTHEAST QUARTER

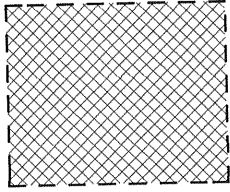
C. & F. GRIEBLING  
69.66 AC.  
ORV 590 PG. 224

1226.33'

879.00'

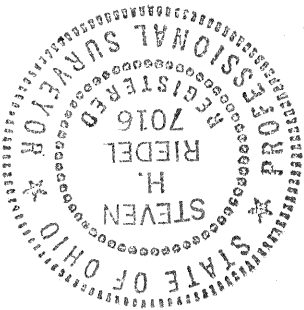
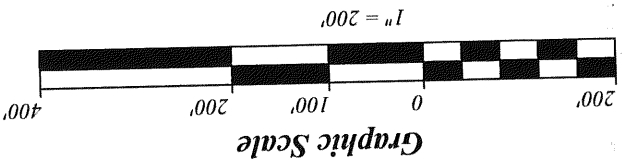
S.W. COR.  
N.E. 1/4

NEW SPLIT  
TAX MAP APPROVED  
DATE



= INGRESS-EGRESS EASEMENT

NOTE: ALL CENTERLINE REFERENCE MONUMENTS  
ARE SET AT 30.00 FEET ALONG LOT LINES.  
ALL BOLD OUT-LINED LOTS ARE OWNED BY  
C. & F. GRIEBLING ORV 584 PAGE 64



STEVEN H. RIEDEL  
OHIO SURVEYOR 7016  
JULY 13, 1999  
REVISED: APRIL 03, 2000  
RTR35NEA