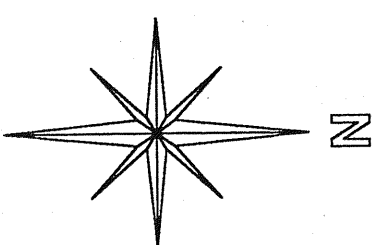


NORTHEAST QUARTER  
SECTION 35 T-20 R-19  
TROY TOWNSHIP  
RICHLAND COUNTY  
OHIO

BASIS OF BEARINGS:  
SURVEY INDEX H  
PAGE 59



*Shirley  
Petersen  
7/24/99*

J. P. REITER  
ORV 399 PG. 15  
55.01 AC.

WEST LINE NORTHEAST QUARTER

R. & S. BAKER  
5.01 AC.  
ORV 456 PG. 644

5.01 AC.

5.07 AC.

5.00 AC.

R. & J. DEARDORFF  
3.00 AC.  
ORV 435 PG. 106

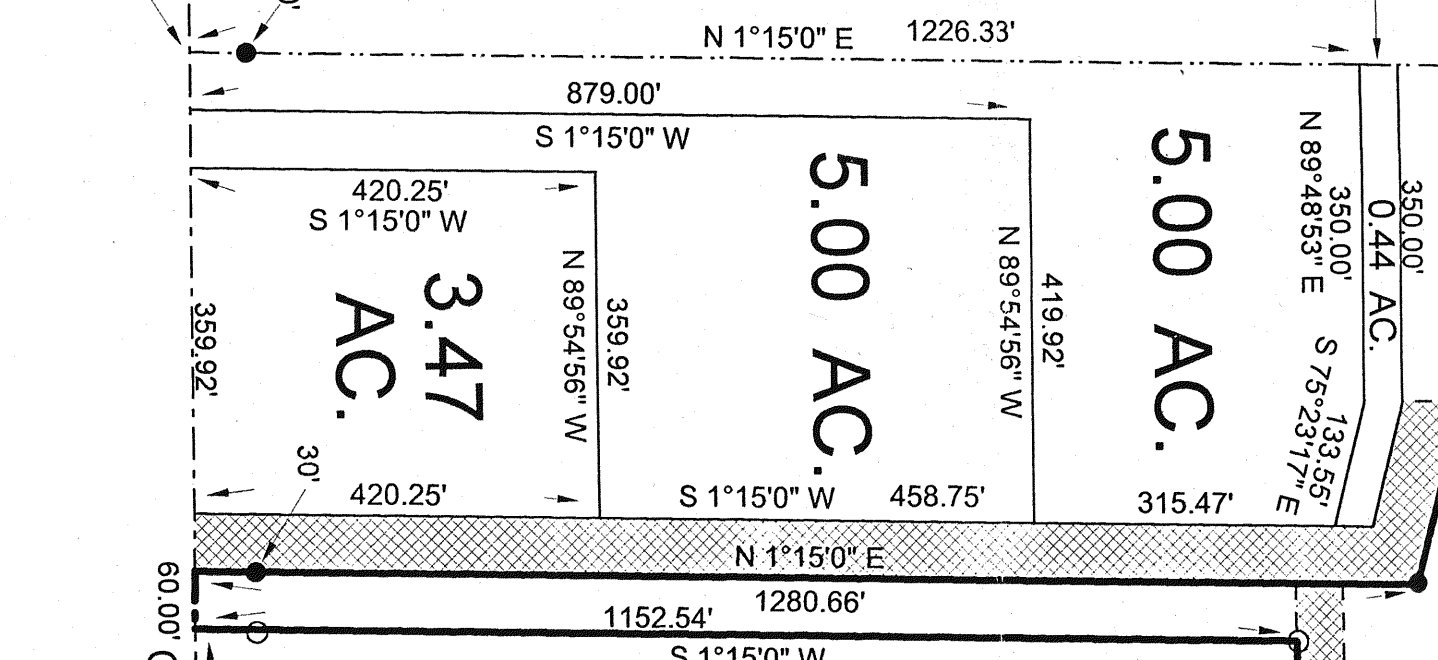
C. & F. GRIEBLING  
69.66 AC.  
ORV 590 PG. 224

5.00 AC.

C. & F. GRIEBLING  
36.409 AC.  
ORV 584 PG. 64

2.72 AC.

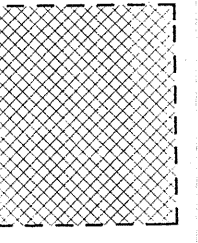
S.W. COR.  
N.E. 1/4



C/L C. R. 35 (KINGS CORNERS ROAD) &  
SOUTH LINE N. E. 1/4

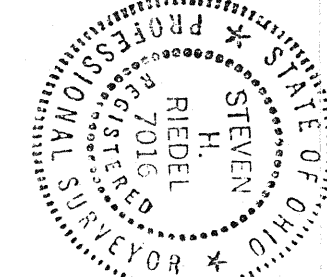
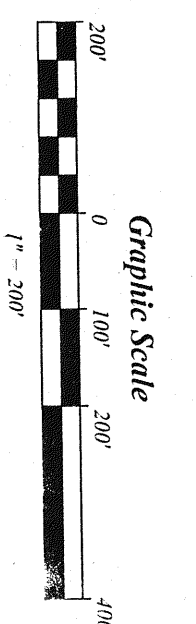
- LEGEND:
- 5/8 INCH REBAR W/CAP STAMPED "PS 7016" SET
  - EXISTING IRON PIN
  - EXISTING SURVEY NAIL

NEW SPLIT  
TAX MAP APPROVED  
DATE 7/13/99



= INGRESS-EGRESS EASEMENT

NOTE: ALL CENTERLINE REFERENCE MONUMENTS  
ARE SET AT 30.00 FEET ALONG LOT LINES.  
ALL BOLD OUT-LINED LOTS ARE OWNED BY  
C. & F. GRIEBLING ORV 584 PAGE 64



STEVEN H. RIEDEL  
OHIO SURVEYOR 7016  
JULY 13, 1999  
RTR351NEA

NEW SPLIT  
TAX MAP APPROVED  
DATE 7/13/99