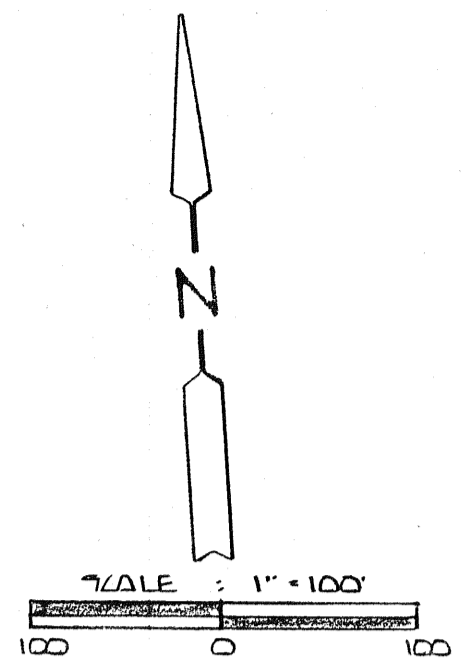


LL. BARR
D.R.V. 2 PG. 389



0" IRON PIN SET AND LAPPED "BLUNK" #6320
Δ - P. K. NAIL SET
BASIS OF BEARINGS: PLAT VOL 75 P. 170

Larry G. Blunk
LARRY G. BLUNK #6320



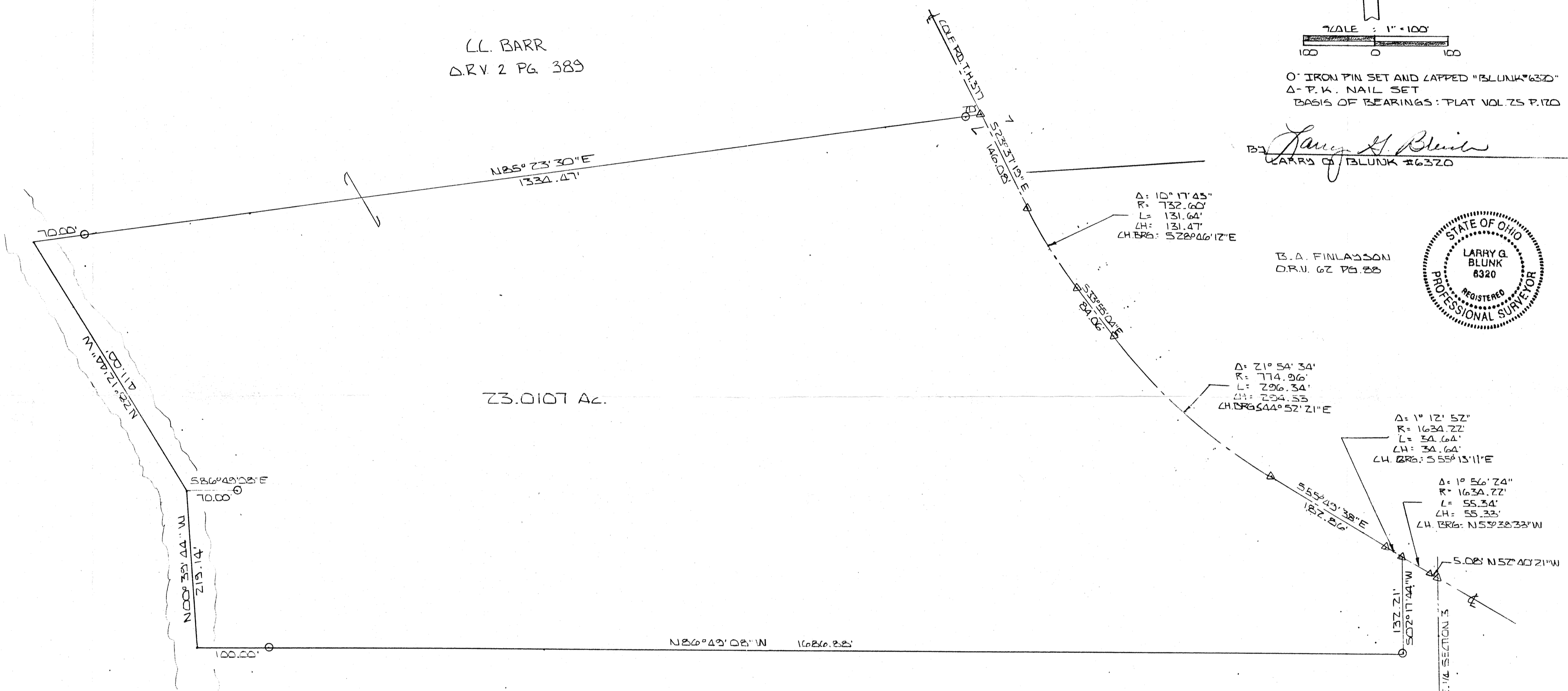
B.A. FINLASSON
D.R.V. 62 PG. 88

Δ: 10° 17' 45"
R: 732.60'
L: 131.64'
CH: 131.47'
CH BRG: S 28° 06' 12" E

Δ: 21° 54' 34"
R: 774.96'
L: 296.34'
CH: 294.55'
CH BRG: S 44° 52' 21" E

Δ: 1° 12' 52"
R: 1634.22'
L: 54.64'
CH: 54.64'
CH BRG: S 55° 15' 11" E

Δ: 1° 56' 24"
R: 1634.22'
L: 55.34'
CH: 55.33'
CH BRG: N 52° 38' 33" W



23.0107 Ac.

G. SNYDER & R. MOWRY
VOL. 818 PG. 464

PLAT OF SURVEY FOR L.L. BARRS LOCATED IN THE SOUTHEAST 1/4 SECTION 3, TOWNSHIP 21, RANGE 17, WORTHINGTON TOWNSHIP, RICHLAND COUNTY, OHIO.		
SCALE: 1" = 100'	APPROVED BY LARRY G. BLUNK	DRAWN BY D.R.A.
DATE: JUNE 22, 1998		
DRAWING NUMBER		

NEW SPLIT
TAX MAP APPROVED
EAK 6-26-98
INITIAL DATE