

BOUNDARY RETRALEMENT PLAT: LANDS OF
 SHELBY MUTUAL INSURANCE COMPANY
 SHELBY FINANCIAL CORPORATION
 PART OF THE NE, NW, SE, & SW QUARTERS OF SECTION NINE (9)
 AND PART OF THE NE, & NW QUARTERS OF SECTION SIXTEEN (16)
 TOWNSHIP TWENTY-TWO (22), RANGE NINETEEN (19)
 CITY OF SHELBY, TOWNSHIP OF JACKSON, COUNTY OF RICHLAND, & STATE OF OHIO

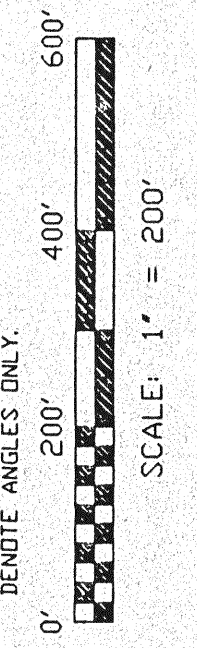
- LEGEND
- O MONUMENT FOUND AS INDICATED
 - MONUMENT NOT FOUND AS INDICATED
 - ▲ P.K. NAIL/NAIL/SPIKE/SPRUE FOUND
 - ▲ P.K. NAIL/NAIL/SPIKE/SPRUE SET
 - ▲ IDEA TOP
 - C.T. CLOSED TOP/FINCH TOP

I hereby certify that an survey of the parcel has been made and markers set or found are shown hereon as indicated on the Retralement Plat. Surveyed by Robert R. Cappelli for R. S. F. Surveying in November/December 1997.

SURVEYOR HAS MADE NO INVESTIGATION OR INDEPENDENT SEARCH FOR ENCUMBRANCES, DRD, ENCUMBRANCES, RESTRICTIVE COVENANTS, EASEMENTS, OR ANY OTHER INTERESTS IN THE PROPERTY. THE SURVEYOR'S LIABILITY IS LIMITED TO THE ACCURACY AND CURRENT TITLE SEARCH MAY DISCLOSE.



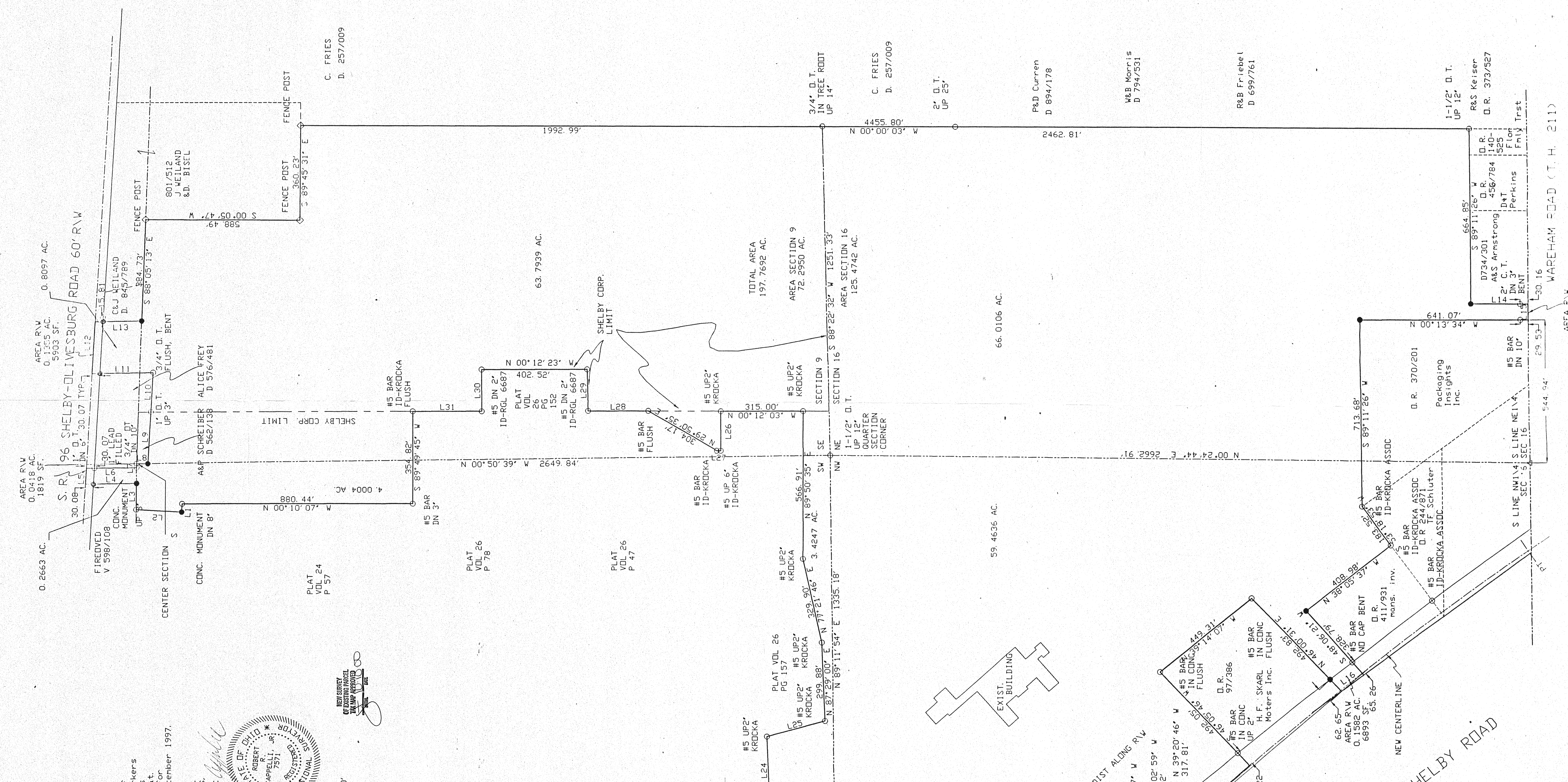
BASIS OF BEARING: BEARINGS SHOWN HEREON ARE TO AN ASSUMED MERIDIAN AND ARE USED TO DEFINE ANGLES ONLY.



SCALE: 1" = 200'

JOB NO.: 9711198
 DATE: DECEMBER, 1997
 REVISED: 2-19-98, 10-02-00

LINE#	BEARING	DISTANCE
L1	N 87° 10' 34"	31.90'
L2	N 86° 28' 58"	173.57'
L3	N 86° 28' 58"	194.01'
L4	S 88° 45' 42"	60.67'
L5	S 88° 45' 42"	190.85'
L6	S 89° 31' 53"	15.54'
L7	N 89° 31' 53"	206.38'
L8	N 88° 37' 40"	130.01'
L9	N 88° 37' 40"	232.78'
L10	N 86° 45' 42"	196.75'
L11	N 86° 45' 42"	177.32'
L12	N 89° 11' 21"	240.36'
L13	N 89° 11' 21"	104.17'
L14	N 89° 11' 21"	719.57'
L15	N 89° 11' 21"	260.66'
L16	N 89° 11' 21"	152.20'
L17	N 89° 11' 21"	216.39'
L18	N 89° 11' 21"	199.96'
L19	N 89° 11' 21"	246.66'
L20	N 89° 11' 21"	256.39'
L21	N 89° 11' 21"	151.67'
L22	N 89° 11' 21"	289.67'
L23	N 89° 11' 21"	159.36'
L24	N 89° 11' 21"	152.65'
L25	N 89° 11' 21"	152.65'
L26	N 89° 11' 21"	152.65'
L27	N 89° 11' 21"	152.65'
L28	N 89° 11' 21"	152.65'
L29	N 89° 11' 21"	152.65'
L30	N 89° 11' 21"	152.65'
L31	N 89° 11' 21"	152.65'



AREA P.V. 0.1613 AC.
 1613 SF.