

SCHUMACHER FARMS INC. - 5.23 Ac. V-843-P-472 NORTH LINE, S.E. 1/4, SECTION 8

D. P. McCLAIN VOL 883, PG. 756

PLAT OF SURVEY FOR W.W. FARMS INC. BEING PART OF THE SOUTHERS 1/4, SECTION 8, TOWNSHIP 21 RA, 19, SPRINGFIELD TOWNSHIP, RIC LAND, COUNTY, OHIO. 7-21-87 REV. 3-10-87 (2.461 Ac.) REV. 7-21-87 (10.488 Ac.)

CRESKLINE VILLAGE 400 AC

ES-1-349

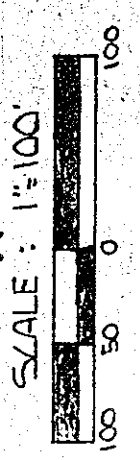
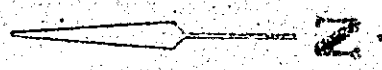
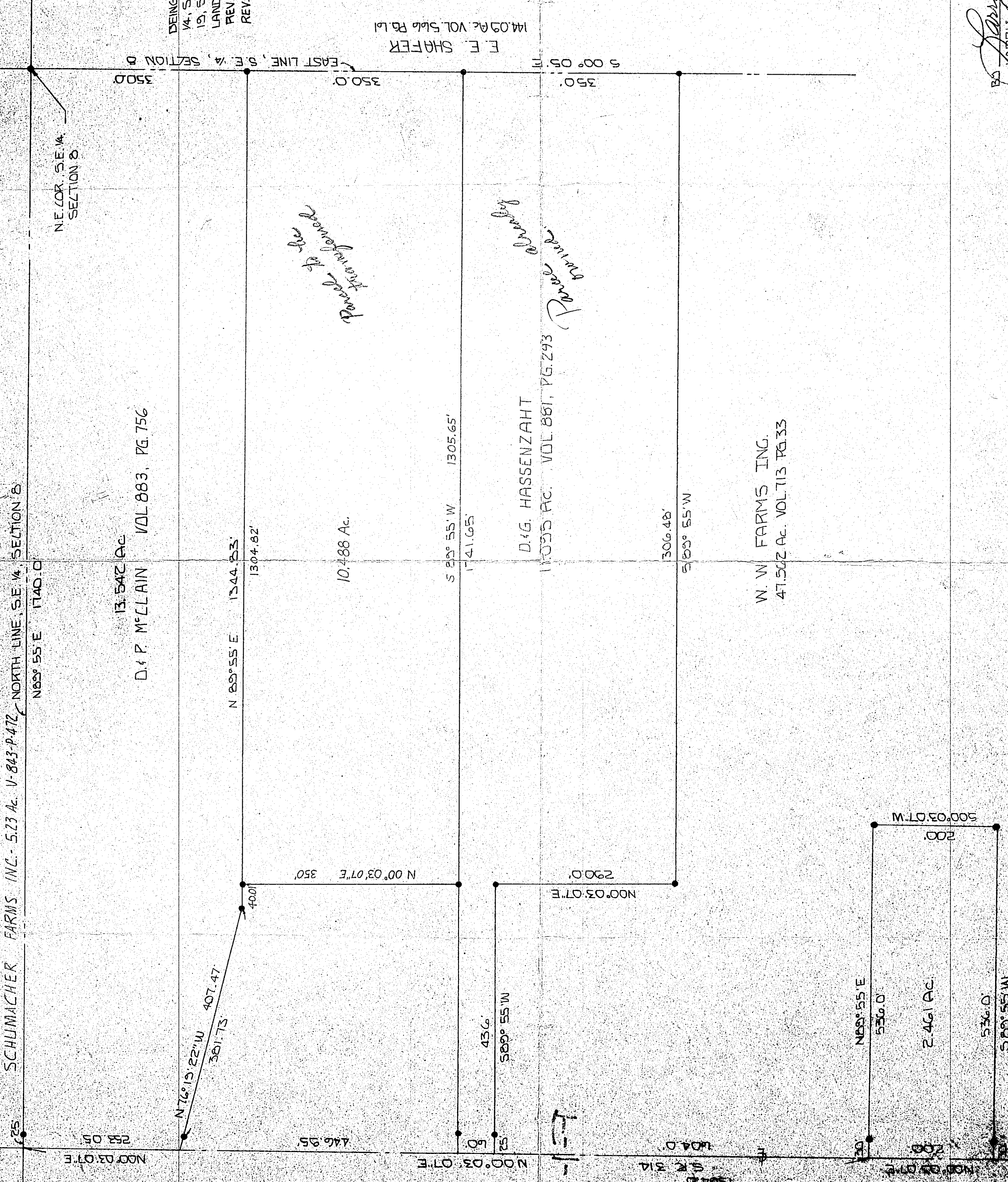
Parcel to be transferred

Place monument twice

D.G. HASSENZAHT

11.025 Ac. VOL 881, PG. 293

W.W. FARMS INC. 47.502 Ac. VOL 713 PG. 33



• 1/2 IRON BAR SET CAPPED "BULLINK" #6320 BASIS OF BEARINGS: SURVEY BY J.A. SEILER OCT. 6, 1983

Jerry E. Blunk
JERRY E. BLUNK #6320