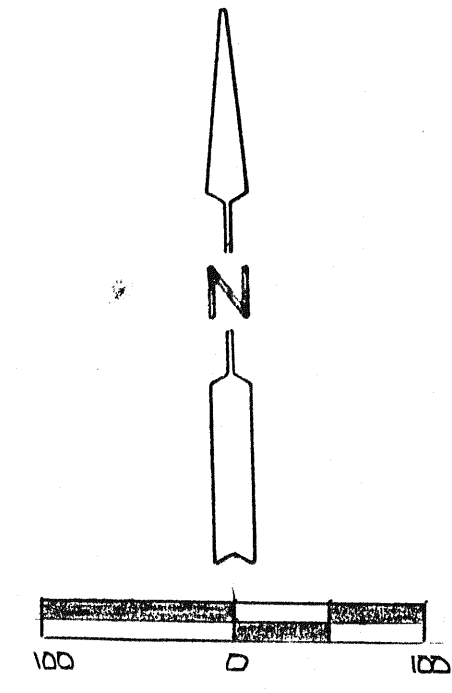


R. & R. PENNELL
ORV. 309 PG. 156

M. SLOAN
VOL. 827 PG. 730

S.W. 1/4 SEL. 12 29.1637 Ac.
TOTAL 36.3943 Ac.



W. LINE, S.W. 1/4, SECTION 12
N 02° 17' 03" E
475.23'

S. & M. NEWSWANGER
VOL. 803 PG. 416

672.54'
N 48° 08' 05" W

S. LINE, S.W. 1/4, SECTION 12
N. LINE, N.W. 1/4, SECTION 13

N.W. 1/4 SEL. 13 7.8312 Ac.

P. W. PRATER
ORV. 166 PG. 121

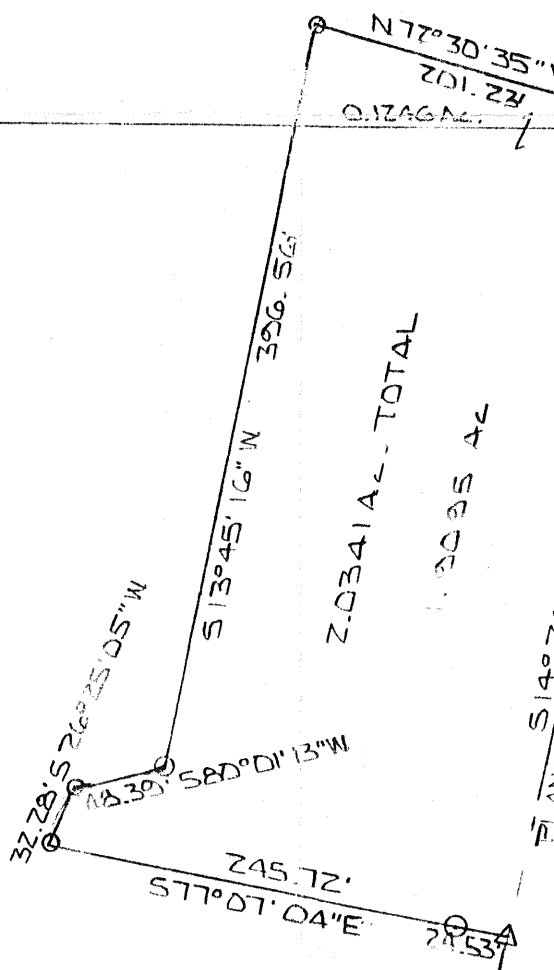
M. & P. ZRUM
ORV. 120 PG. 385

FRANKTOWN VOL. 1 PG. 107

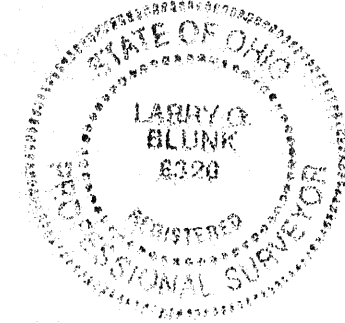
DELTA = 00° 27' 10"
RADIUS = 7864.93'
CHORD = 23.18'
CH. BRG = N 46° 23' 55" W
ARL = 23.18'

DELTA = 01° 20' 47"
RADIUS = 2864.93'
CHORD = 67.32'
CH. BRG = N 49° 26' 31" W
ARL = 67.32'

DELTA = 10° 39' 00"
RADIUS = 955.21'
CHORD = 177.33'
CH. BRG = N 55° 26' 30" W
ARL = 177.58'



James H. Blunk
CARRIES BLUNK #6370



PLAT OF SURVEY LOCATED IN THE SW 1/4 SECTION 12 & NW 1/4 SECTION 13, T-23, R-19, LASS TWP, FRANKLAND TOWNSHIP			
FOR: BETTY E. LUTZ	SCALE 1" = 100'	DRAWN BY D.R.A.	REVISED
0-I.P. SET & APPED Δ-PK. SET ■-FENCE POST FOUND			
DATE 8.14.06	APPROVED BY BASIS OF BEARINGS: ODOT RAILROAD SURVEY ET AL	DRAWING NUMBER	

NEW SURVEY OF EXISTING PARCEL TAX MAP APPROVED
DATE 8.14.06
NEW SPLIT TAX MAP APPROVED
DATE 8.14.06