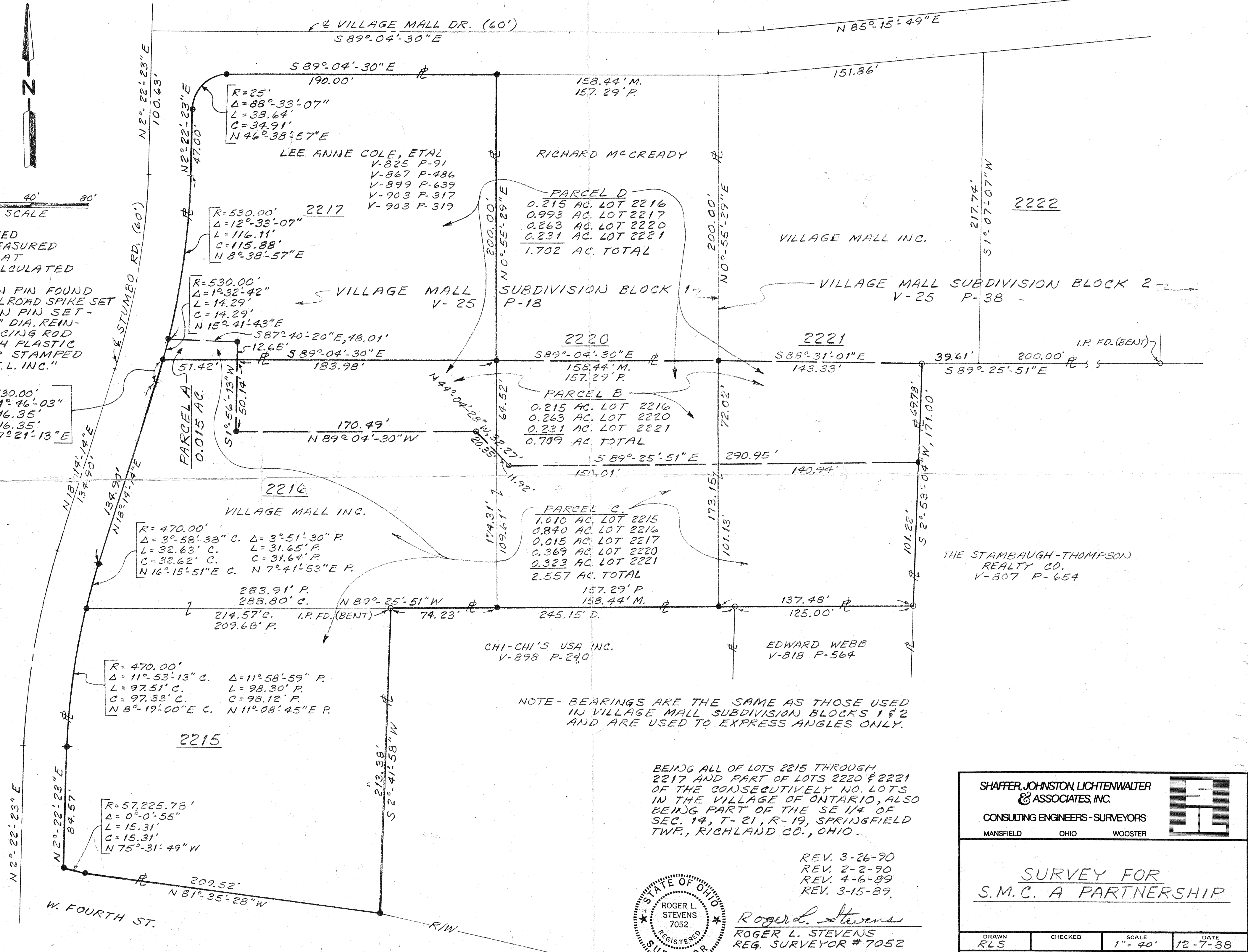


D - DEED  
M - MEASURED  
P - PLAT  
C - CALCULATED

○ IRON PIN FOUND  
■ RAILROAD SPIKE SET  
● IRON PIN SET -  
5/8" DIA. REIN-  
FORCING ROD  
WITH PLASTIC  
CAP STAMPED  
"S.J.L. INC."

R=530.00'  
Δ=1°46'-03"  
L=16.35'  
C=16.35'  
N17°21'-13"E



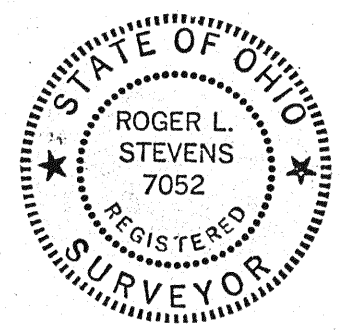
R=470.00'  
Δ=3°58'-38" C. Δ=3°51'-30" P.  
L=32.63' C. L=31.65' P.  
C=32.62' C. C=31.64' P.  
N16°15'-51"E C. N7°41'-53"E P.

R=470.00'  
Δ=11°53'-13" C. Δ=11°58'-59" P.  
L=97.51' C. L=98.30' P.  
C=97.33' C. C=98.12' P.  
N8°19'-00"E C. N11°08'-45"E P.

R=57,225.78'  
Δ=0°-0'-55"  
L=15.31'  
C=15.31'  
N75°-31'-49"W

NOTE - BEARINGS ARE THE SAME AS THOSE USED  
IN VILLAGE MALL SUBDIVISION BLOCKS 1 & 2  
AND ARE USED TO EXPRESS ANGLES ONLY.

BEING ALL OF LOTS 2215 THROUGH  
2217 AND PART OF LOTS 2220 & 2221  
OF THE CONSECUTIVELY NO. LOTS  
IN THE VILLAGE OF ONTARIO, ALSO  
BEING PART OF THE SE 1/4 OF  
SEC. 19, T-21, R-19, SPRINGFIELD  
TWP., RICHLAND CO., OHIO.



REV. 3-26-90  
REV. 2-2-90  
REV. 4-6-89  
REV. 3-15-89.

*Roger L. Stevens*  
ROGER L. STEVENS  
REG. SURVEYOR # 7052

SHAFFER, JOHNSTON, LICHTENWALTER & ASSOCIATES, INC.			
CONSULTING ENGINEERS - SURVEYORS			
MANSFIELD	OHIO	WOOSTER	
<b>SURVEY FOR</b> <b>S.M.C. A PARTNERSHIP</b>			
DRAWN RLS	CHECKED	SCALE 1" = 40'	DATE 12-7-88
JOB NO EM 1132		SHEET 1 OF 1	