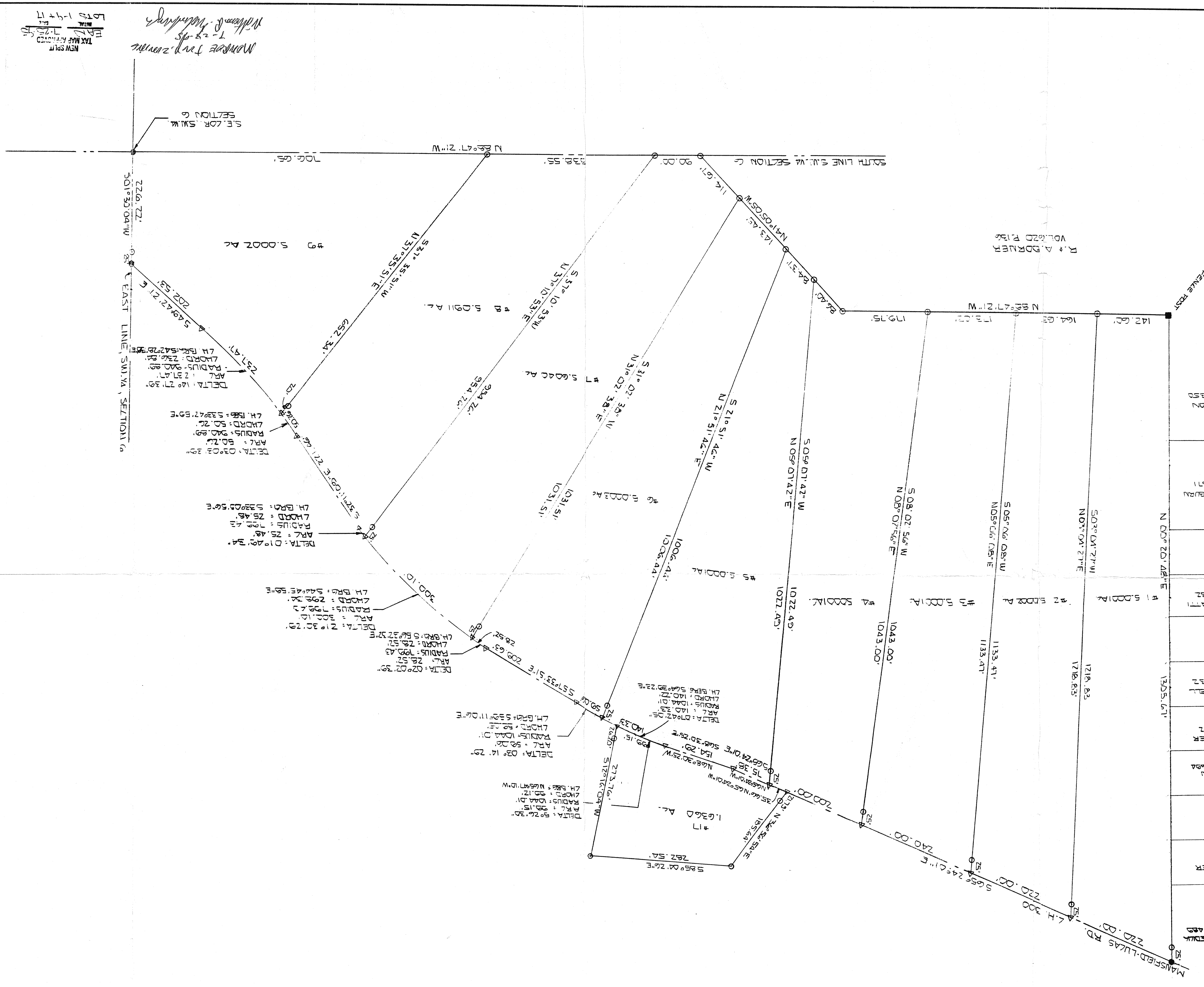




Barry G. Blunk #63322

TO DENOTE ANGLES DIMS. ARE TO AN ASSUMED POINT AND ARE USED

D.L. REPAIR	V. 150 P. 485
S.I.T. SPITZER	V. 901 P. 3
HENDERSON	DRV. 512 P. 684
F.L. TUKER	V. 173 P. 112
W.E. TIDWELL	V. 710 P. 532
R.2 TIDWELL	DRV. 78 P. 732
D.2 BLAKBURN	V. 177 P. 511
T.E. REYSON	V. 125 P. 150



LOCATED IN THE SOUTHWEST 1/4 SECTION 6, TWP. 21, RANGE 17, MONROE TWP., ROCKAWAY COUNTY, OHIO.
 DRAWN BY: DRA
 SCALE: 1"=100'
 REVISIONS:
 APPROVED BY: [Signature]
 DATE: 7-20-95

Monroe Twp. zoning
 1-2-95
 William D. Winkler
 Twp. Engineer
 NEWSPRINT
 TAX MAP APPROVED
 DATE: 7-25-95
 LOTS 1-4+11

S.E. COR. S.W. 1/4 SECTION 6
 100.00'
 726.72'
 301° 30' 04" W
 5.0002 AC

DELTA: 02° 02' 39"
 RADIUS: 940.99'
 ARL: 80.74'
 LH BRG: 539° 47' 59"E
 LH BRG: 539° 47' 59"E

DELTA: 02° 02' 39"
 RADIUS: 798.43'
 ARL: 302.10'
 LH BRG: 544° 45' 58"E
 LH BRG: 544° 45' 58"E

DELTA: 02° 14' 29"
 RADIUS: 1044.01'
 ARL: 50.26'
 LH BRG: 532° 11' 06"E
 LH BRG: 532° 11' 06"E

DELTA: 50° 26' 30"
 RADIUS: 99.15'
 ARL: 22.12'
 LH BRG: N 65° 07' 10" W
 LH BRG: N 65° 07' 10" W

DELTA: 07° 04' 25"
 RADIUS: 140.22'
 ARL: 140.22'
 LH BRG: S 44° 30' 23"E
 LH BRG: S 44° 30' 23"E

DELTA: 02° 20' 25" W
 RADIUS: 154.29'
 ARL: 75.38'
 LH BRG: 508° 30' 25" W
 LH BRG: 508° 30' 25" W

DELTA: 02° 02' 39"
 RADIUS: 940.99'
 ARL: 80.74'
 LH BRG: 539° 47' 59"E
 LH BRG: 539° 47' 59"E

DELTA: 02° 02' 39"
 RADIUS: 940.99'
 ARL: 80.74'
 LH BRG: 539° 47' 59"E
 LH BRG: 539° 47' 59"E

DELTA: 02° 02' 39"
 RADIUS: 940.99'
 ARL: 80.74'
 LH BRG: 539° 47' 59"E
 LH BRG: 539° 47' 59"E