

Bearing Basis:
E of South Main St
North of Lot 322

Due North

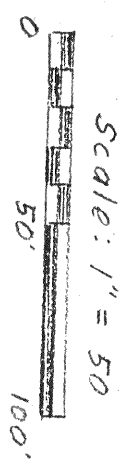
LOT 322

N. Line SE 1/4 Sec 9

NE COR of SE 1/4 = PKM

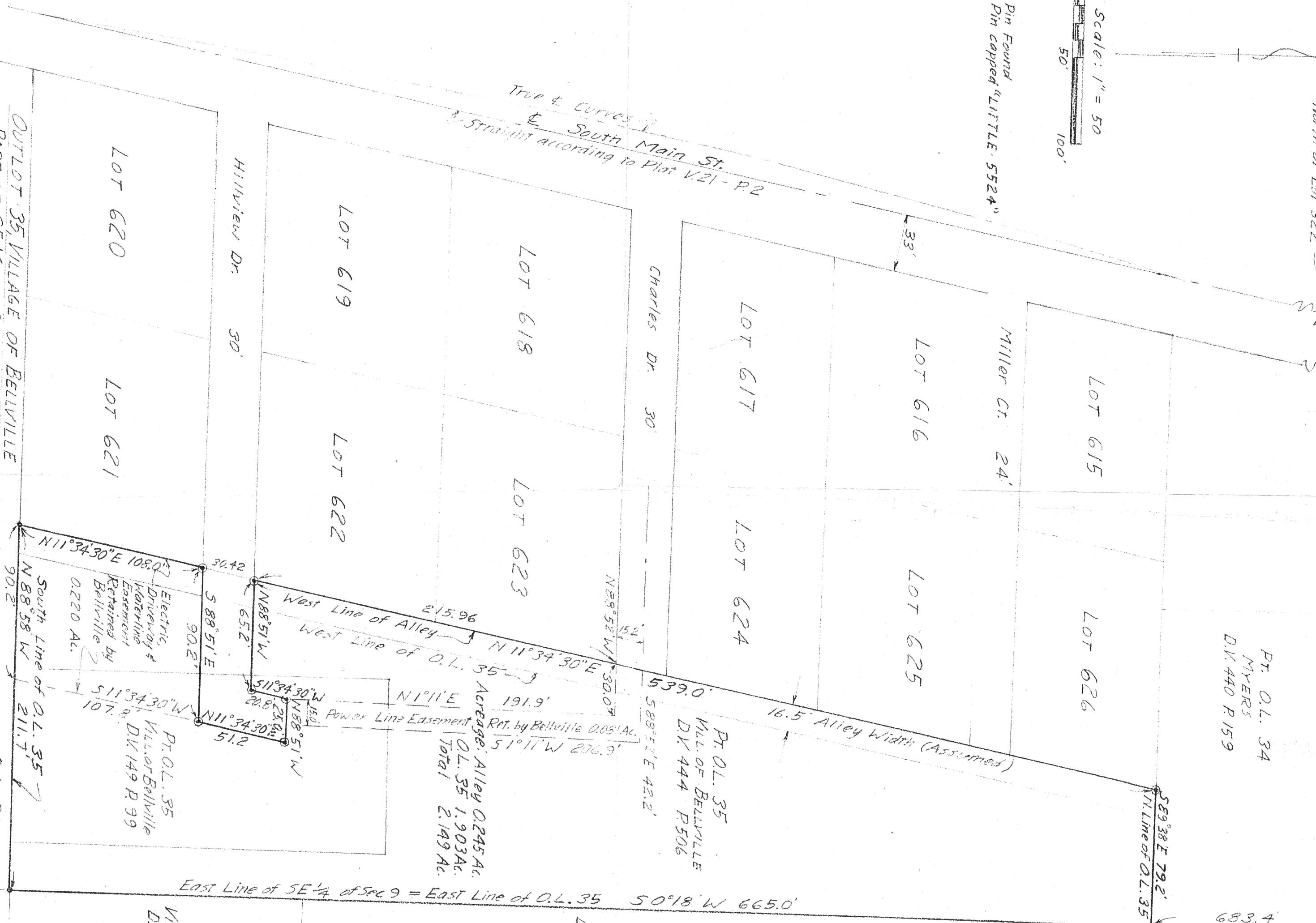
PT. O.L. 34
MYERS
D.V. 440 P. 159

4.52
5.89



• = Iron Pin Found
⊙ = Iron Pin capped "LITTLE 5524"

True & Curves
E South Main St
Straight according to Plot V.21-P.2



OUTLOT 35, VILLAGE OF BELLVILLE
PART OF SE 1/4 OF SEC 9 TWP 19, Rng 18
VILLAGE OF BELLVILLE, TOWNSHIP OF
JEFFERSON, COUNTY OF RICHLAND
STATE OF OHIO

Robert M. Little
Registered Surveyor # Ohio 5524
October 27, 1989

APPROVED
TAX MAP OFFICE
EA.N.
DATE 11-3-89

O.L. 38
ALFRED C. HESS
D.V. 767 P. 693

O.L. 37
ALFRED C. HESS
D.V. 622 P. 529

Electric, Driveway & Waterline Easement Retained by Bellville
0.220 Ac.

PT. O.L. 35
VILL. OF BELLVILLE
D.V. 149 P. 99

Acres: Alley 0.245 Ac.
O.L. 35 1.903 Ac.
Total 2.149 Ac.

O.L. 32
ALFRED C. HESS
D.V. 622 P. 529

O.L. 36
VILL. OF BELLVILLE
D.V. 444 P. 502

East Line of SE 1/4 of Sec 9 = East Line of O.L. 35 50°18' W 665.0'

PT. O.L. 35
VILL. OF BELLVILLE
D.V. 444 P. 506

539.0'
58°52'E 42.2'

16.5' Alley Width (Assumed)

Ret. by Bellville 0.081 Ac.
51°11' W 206.9'

Power Line Easement
15.0'
N 88°51' W 51.2'

West Line of Alley 215.96
West Line of O.L. 35
N 11°34'30" E 191.9'
N 11°34'30" E 108.0'
N 88°58' W 211.7'
South Line of O.L. 35
N 88°58' W 90.2'

30.42

588.51'E
90.2'

N 88°51' W
65.2'

511°34'30" W
206.9'

N 11°34'30" W
51.2'

90.2'

N 88°52' W
30.0'

15.2'

539.0'

58°52'E 42.2'

S 89°38' E 79.2'
N. Line of O.L. 35