



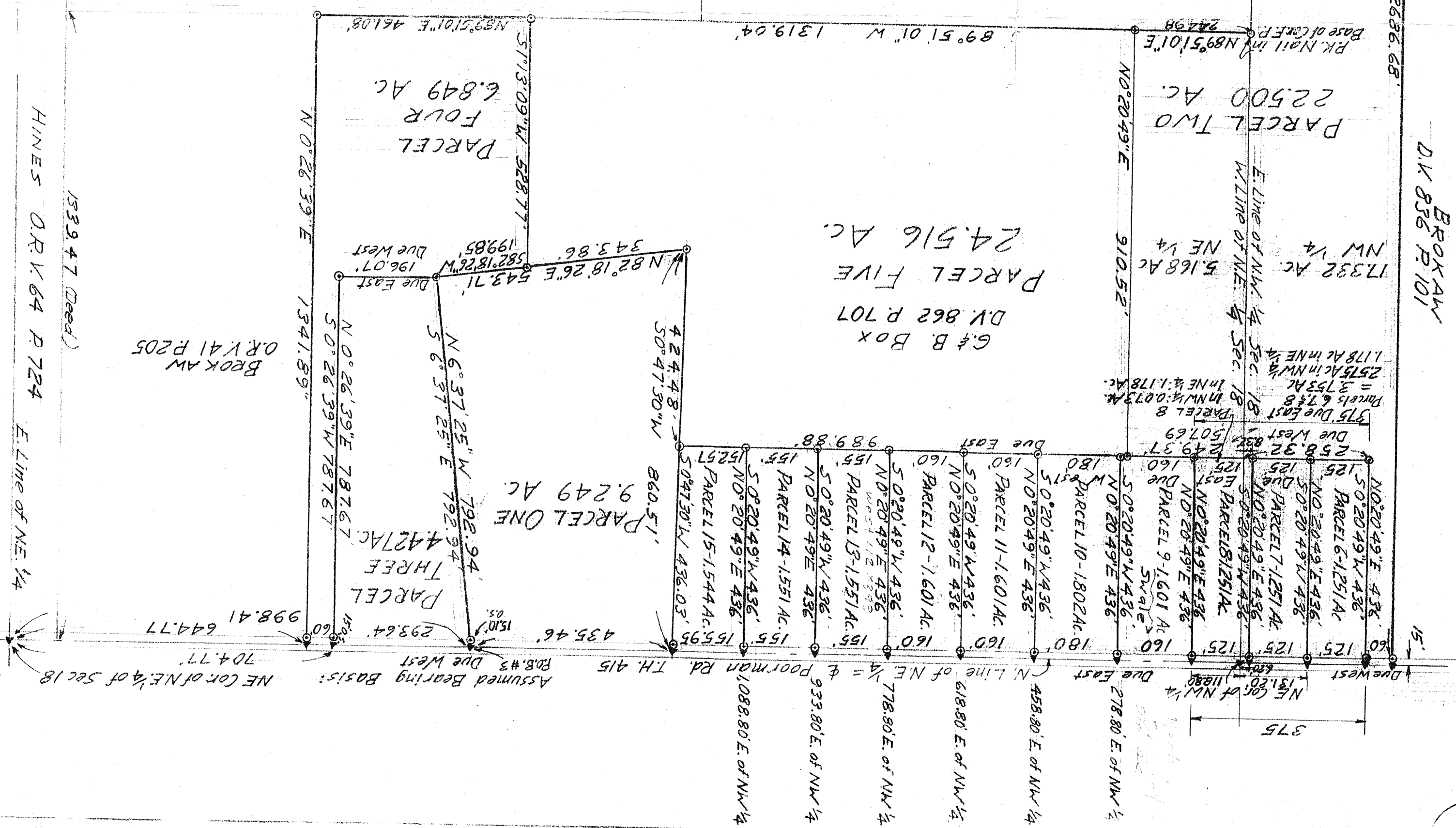
SURVEY OF G & B. BOX PROPERTY
 PART OF NE & NW QUARTERS
 SECTION 18 TOWNSHIP 19 RANGE 13
 JEFFERSON TOWNSHIP RICHLAND COUNTY, OHIO
 Robert M. Little, Registered Surveyor # Ohio 5524
 Nov 25, 1991
 Rev Jun 23 '92 Parcels 6, 7, & 8
 Rev Sep 25 '92 Parcels 9-15
 Rev Dec 29 '92 Combine 6, 7, & 8

Scale: 1" = 200'
 0 100 200 300
 Iron Pin set and capped "LITTLE-5524"
 PK Nail set

HAMILTON
 D.V. 842 P. 58
 5° 0' 20" 49" W
 2636.68'
 HAMILTON
 D.V. 836 P. 101
 5° 0' 4' 12" E
 1340.42'
 W. Line of NE 1/4
 S.W. Cor. of NE 1/4
 PK Nail in
 589.50' 17" E
 329.19'
 Top of Cor. F.P.
 O.R.V. 77 P. 89

MOUNTS
 O.R.V. 91 P. 519

NETTLE HOLLOW FARM INC.
 O.R.V. 120 P. 377



HINES O.R.V. 64 P. 724
 E. Line of NE 1/4

Assumed Bearing Basis:
 NE Cor. of NE 1/4 of Sec 18
 Rdb. #3 Due West
 TH. 415
 704.77'

BEOKAW
 O.R.V. 41 P. 205

1339.47 (Deed)