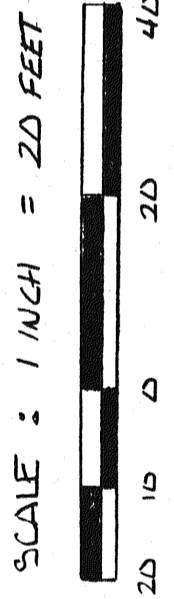


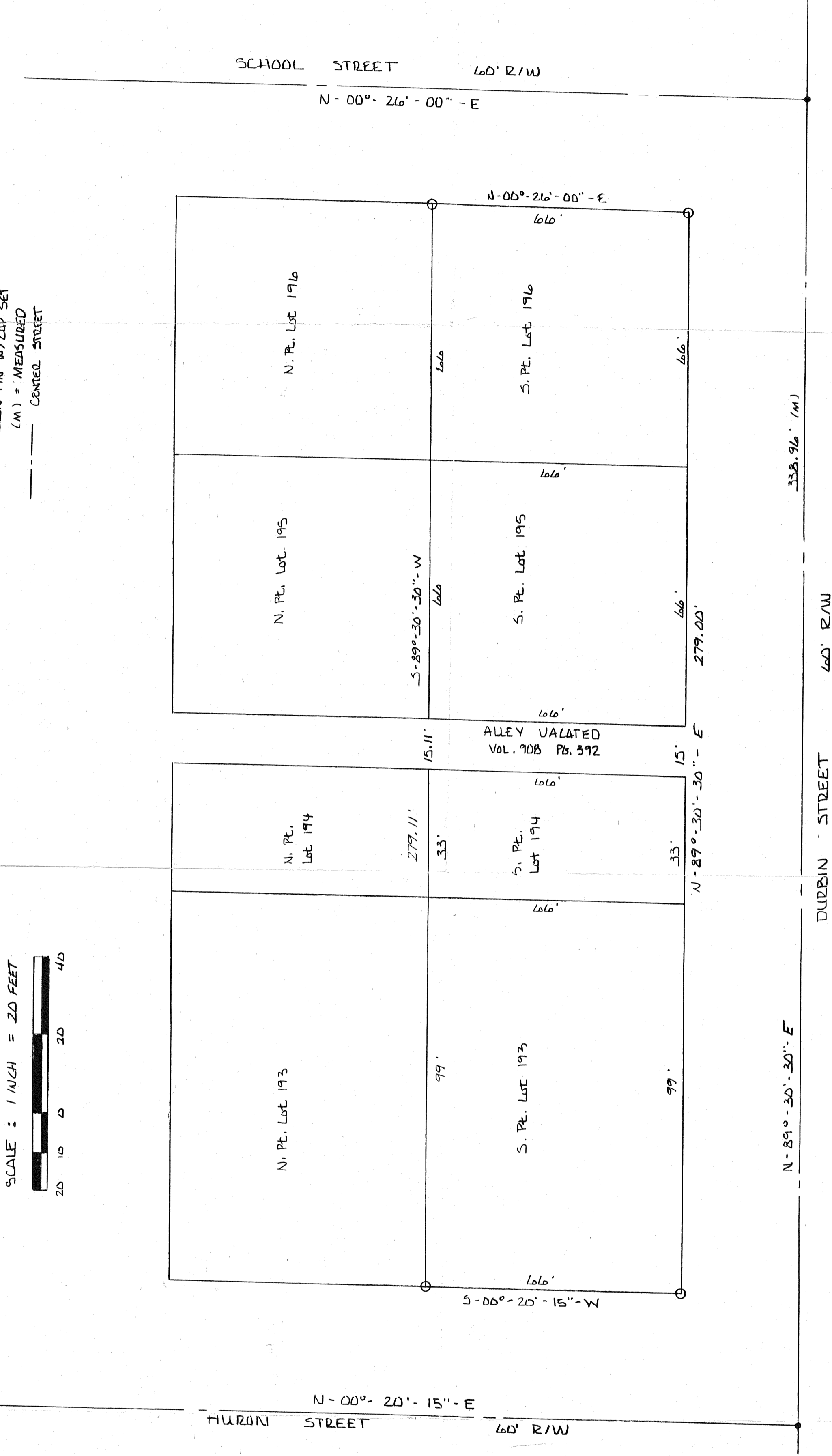
SURVEY FOR UNITED METHODIST CHURCH

BEING A PART OF LOT NUMBERS 193, 194, 195 AND 196,
WITHIN THE VILLAGE OF BELLVILLE, JEFFERSON TOWNSHIP,
RICHLAND COUNTY, STATE OF OHIO



- LEGEND**
- P.K. FOUND
 - IRON PIN W/CAP SET
 - (M) = MEASURED
 - CENTER STREET

NORTH
FROM ASSUMED
MERIDIAN

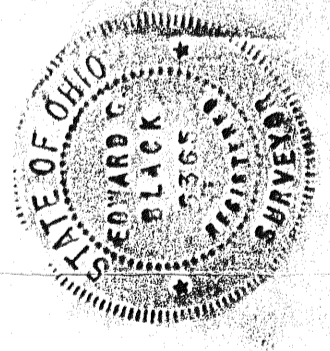


I EDWARD G. BLACK, P.S., HEREBY CERTIFY
THE ABOVE PLAT WAS MADE FROM A ACTUAL
FIELD SURVEY PERFORMED BY ME IN
JAN. OF 1991. ALL BEARINGS ARE FROM AN
ASSUMED MERIDIAN.

Edward G. Black, P.S.

EDWARD G. BLACK, P.S. - DEPT. SURVEYOR No. 6365

REFERENCE
DEED VOL. 714 Pgs. 275
006 PLAT BOOKS - Pgs. 8
UTILITY TAX MAPS



APPROVED
TAX MAP OFFICE
E.A.N.
INITIAL DATE

D.P.A. Vial
INITIAL DATE
TRANSFER APPROVED
FREEMAN J. SWANK
RICHLAND CO. AUDITOR