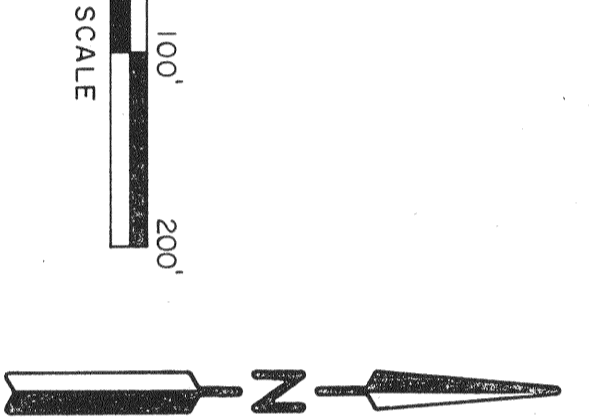


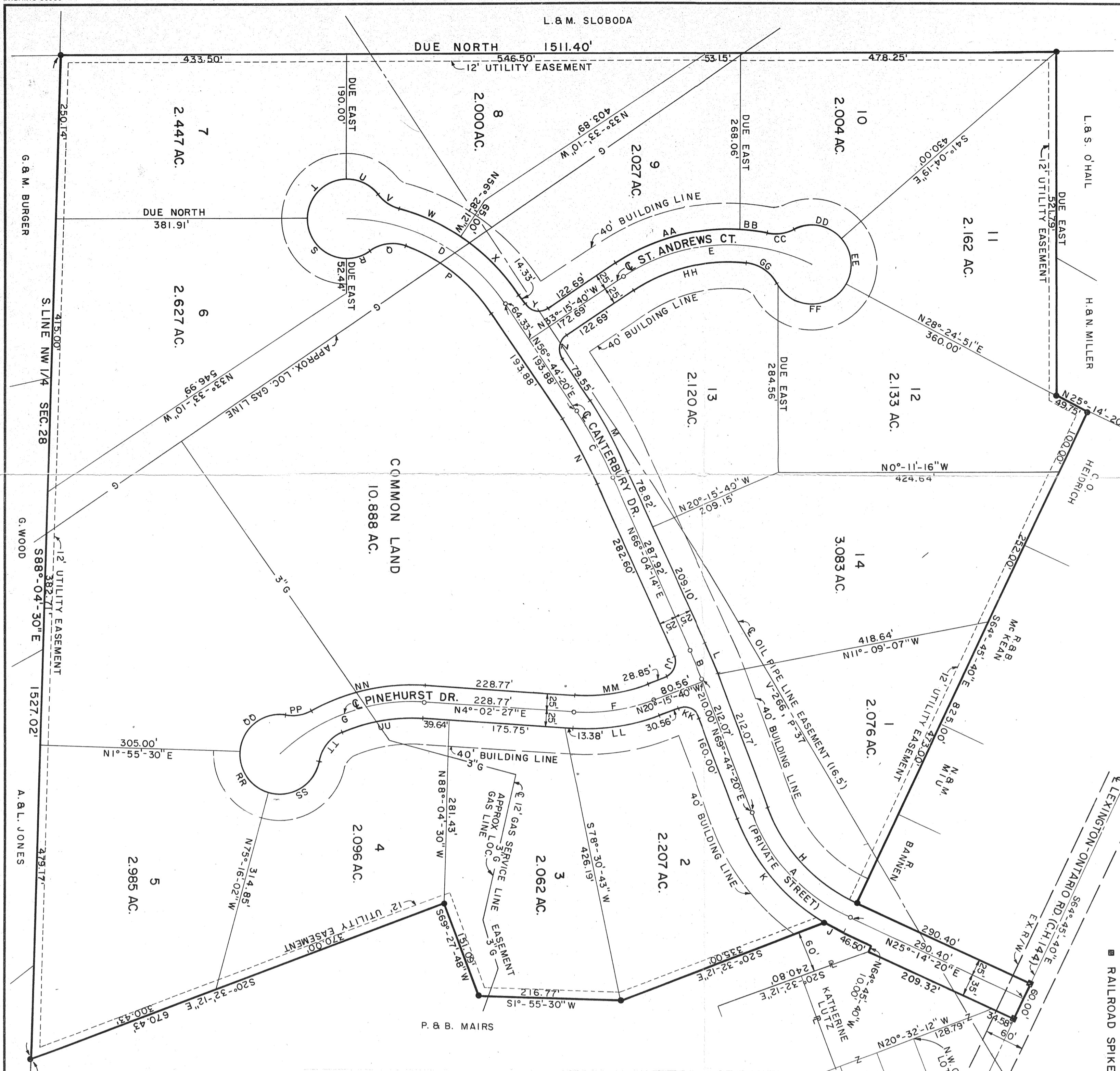
# THE HOLLOWES

PT NW 1/4 SEC. 28 TWP. 21, R. 19  
SPRINGFIELD TWP.  
RICHLAND CO. OHIO



LEGEND  
● MONUMENT  
— RAILROAD SPIKE

LEGAL DESCRIPTION  
LOCATED IN SPRINGFIELD TOWNSHIP, RICHLAND COUNTY, STATE OF OHIO AND BEING PART OF THE NORTHWEST QUARTER OF SECTION 28, TOWNSHIP 21, RANGE 19 AND MORE PARTICULARLY DESCRIBED AS FOLLOWS: BEGINNING AT THE NORTHWEST CORNER OF LOT #21 IN THE VILLAGE OF MILLSBOROUGH AS RECORDED IN PLAT BOOK 1, PAGE 135 OF THE RICHLAND COUNTY RECORDS; THENCE N20° 32' 12"W A DISTANCE OF 128.79' TO THE TRUE POINT OF BEGINNING; THENCE S29° 14' 14" W A DISTANCE OF 209.32' TO A POINT; THENCE N60° 45' 40" W A DISTANCE OF 10.00' TO A POINT; THENCE S29° 14' 20" W A DISTANCE OF 315.00' TO A POINT; THENCE S69° 27' 48"W A DISTANCE OF 350.00' TO A POINT; THENCE S19° 55' 30" W A DISTANCE OF 216.77' TO A POINT; THENCE S20° 32' 12" W A DISTANCE OF 141.00' TO A POINT; THENCE S20° 32' 12" W A DISTANCE OF 670.43' TO A POINT ON THE SOUTH LINE OF THE SECTION; THENCE S10° 55' 30" W A DISTANCE OF 216.77' TO A POINT; THENCE S20° 32' 12" W A DISTANCE OF 152.79' TO A POINT; THENCE S29° 14' 20" W A DISTANCE OF 49.75' TO A POINT; THENCE S60° 45' 40" W A DISTANCE OF 825.00' TO A POINT; THENCE N29° 14' 20" W A DISTANCE OF 290.40' TO A POINT IN THE CENTERLINE OF LEXINGTON ORNARD ROAD (C.H. 144); THENCE S60° 45' 40" W A DISTANCE OF 49.75' TO A POINT; THENCE S29° 14' 20" W A DISTANCE OF 34.50' TO THE CENTERLINE OF BEGINNING AND CONTAINING 49.741 ACRES, MORE OR LESS, OF WHICH 3.824 ACRES, MORE OR LESS, IS FOR PRIVATE STREETS.



CURVE	Δ	R	A	C	N
CURVE A	90°-01'-00"	390.00'	116.60'	116.60'	116.60'
CURVE B	30°-40'-08"	716.20'	45.98'	45.98'	45.98'
CURVE C	97°-19'-54"	379.13'	118.60'	118.60'	118.60'
CURVE D	36°-44'-20"	567.41'	300.10'	286.39'	300.10'
CURVE E	39°-17'-29"	392.17'	300.10'	286.39'	300.10'
CURVE F	28°-19'-07"	280.18'	120.07'	122.08'	120.07'
CURVE G	90°-19'-54"	390.00'	116.60'	116.60'	116.60'
CURVE H	47°-08'-51"	480.30'	716.20'	45.98'	45.98'
CURVE I	28°-40'-08"	716.20'	45.98'	45.98'	45.98'
CURVE J	30°-40'-08"	716.20'	45.98'	45.98'	45.98'
CURVE K	30°-41'-24"	711.20'	47.48'	47.48'	47.48'
CURVE L	37°-19'-54"	379.13'	118.60'	118.60'	118.60'
CURVE M	90°-01'-00"	390.00'	116.60'	116.60'	116.60'
CURVE N	90°-19'-54"	390.00'	116.60'	116.60'	116.60'
CURVE O	28°-40'-08"	716.20'	45.98'	45.98'	45.98'
CURVE P	30°-43'-19"	285.00'	167.00'	167.00'	167.00'
CURVE Q	35°-02'-15"	351.24'	138.45'	138.45'	138.45'
CURVE R	28°-40'-08"	716.20'	45.98'	45.98'	45.98'
CURVE S	35°-02'-15"	351.24'	138.45'	138.45'	138.45'
CURVE T	90°-01'-00"	390.00'	116.60'	116.60'	116.60'
CURVE U	28°-40'-08"	716.20'	45.98'	45.98'	45.98'
CURVE V	37°-05'-45"	370.00'	60.00'	60.00'	60.00'
CURVE W	30°-40'-08"	716.20'	45.98'	45.98'	45.98'
CURVE X	37°-05'-45"	370.00'	60.00'	60.00'	60.00'
CURVE Y	30°-40'-08"	716.20'	45.98'	45.98'	45.98'
CURVE Z	90°-01'-00"	390.00'	116.60'	116.60'	116.60'
CURVE AA	28°-40'-08"	716.20'	45.98'	45.98'	45.98'
CURVE AB	30°-40'-08"	716.20'	45.98'	45.98'	45.98'
CURVE AC	30°-40'-08"	716.20'	45.98'	45.98'	45.98'
CURVE AD	30°-40'-08"	716.20'	45.98'	45.98'	45.98'
CURVE AE	30°-40'-08"	716.20'	45.98'	45.98'	45.98'
CURVE AF	30°-40'-08"	716.20'	45.98'	45.98'	45.98'
CURVE AG	30°-40'-08"	716.20'	45.98'	45.98'	45.98'
CURVE AH	30°-40'-08"	716.20'	45.98'	45.98'	45.98'
CURVE AI	30°-40'-08"	716.20'	45.98'	45.98'	45.98'
CURVE AJ	30°-40'-08"	716.20'	45.98'	45.98'	45.98'
CURVE AK	30°-40'-08"	716.20'	45.98'	45.98'	45.98'
CURVE AL	30°-40'-08"	716.20'	45.98'	45.98'	45.98'
CURVE AM	30°-40'-08"	716.20'	45.98'	45.98'	45.98'
CURVE AN	30°-40'-08"	716.20'	45.98'	45.98'	45.98'
CURVE AO	30°-40'-08"	716.20'	45.98'	45.98'	45.98'
CURVE AP	30°-40'-08"	716.20'	45.98'	45.98'	45.98'
CURVE AQ	30°-40'-08"	716.20'	45.98'	45.98'	45.98'
CURVE AR	30°-40'-08"	716.20'	45.98'	45.98'	45.98'
CURVE AS	30°-40'-08"	716.20'	45.98'	45.98'	45.98'
CURVE AT	30°-40'-08"	716.20'	45.98'	45.98'	45.98'
CURVE AU	30°-40'-08"	716.20'	45.98'	45.98'	45.98'
CURVE AV	30°-40'-08"	716.20'	45.98'	45.98'	45.98'
CURVE AW	30°-40'-08"	716.20'	45.98'	45.98'	45.98'
CURVE AX	30°-40'-08"	716.20'	45.98'	45.98'	45.98'
CURVE AY	30°-40'-08"	716.20'	45.98'	45.98'	45.98'
CURVE AZ	30°-40'-08"	716.20'	45.98'	45.98'	45.98'

SURVEYOR'S CERTIFICATE  
I, ROGGER L. STEVENS, SURVEYOR, DO HEREBY CERTIFY THAT WE HAVE SURVEYED THE PREMISES AND PREPARED THE ATTACHED PLAT AND THAT SAID PLAT IS CORRECT; THAT ALL REQUIRED SURVEY MONUMENTS ARE CORRECTLY SHOWN THEREON; THAT THOSE WHICH ARE NECESSARY FOR THE CONSTRUCTION OF IMPROVEMENTS ARE IN PLACE ON THE SITE AND THAT ANY REMAINING SURVEY MONUMENTS WILL BE PROPERLY PLACED UPON COMPLETION OF CONSTRUCTION. THE ERROR OF CLOSURE IS WITHIN THE LIMITS OF ONE IN TEN THOUSAND. DIMENSIONS ON CURVES ARE ARC MEASUREMENTS.  
REGISTERED SURVEYOR NO. 7092  
DATE 11-30-92  
ROGGER L. STEVENS  
ALL LOTS SUBJECT TO DECLARATION OF PROTECTIVE COVENANTS AS RECORDED IN DEED BOOK 25, PAGES 429 THROUGH 430 OF THE RICHLAND COUNTY RECORDS.

APPROVED THIS 11th DAY OF NOVEMBER 1991.  
APPROVED THIS 11th DAY OF NOVEMBER 1991.  
APPROVED THIS 11th DAY OF NOVEMBER 1991.  
APPROVED THIS 11th DAY OF NOVEMBER 1991.

FILED FOR RECORD THIS 11th DAY OF NOVEMBER 1991 AT RICHLAND COUNTY AUDITOR'S OFFICE.  
RECORDED THIS 11th DAY OF NOVEMBER 1991 IN PLAT BOOK 25.

### THE HOLLOWES

PT. NW 1/4 SEC. 28 TWP. 21, R. 19  
SPRINGFIELD TWP., RICHLAND CO. OHIO

**SHAFER-JOHNSON LICHTENWALTER ASSOCIATES INC.**  
CONSULTING ENGINEERS - SURVEYORS  
WOOSTER OHIO

NEW SURVEY OF EXISTING PARCEL TAX MAP APPROVED  
EAS 17-1-92  
DATE 11-30-92