

STAYER & FOLLOK  
VOL. 115 PG. 167

N89°14'23"E 1876.37'

13.43993 AC.

WEST LINE, S.E. 1/4, SECTION 2  
N00°19'21"W 332.61'

S.W. COR. S.E. 1/4 SECTION 2  
N.W. COR. N.E. 1/4 SECTION 11

SOUTH LINE, S.E. 1/4, SECTION 2  
S88°03'43"W 1156.40'  
N89°03'43"E 1156.40'  
NORTH LINE, N.E. 1/4, SECTION 11

38.00000 AC.

294.00'  
500°32'33"E  
J. & S. HOFFMAN  
VOL. 899 PG. 675

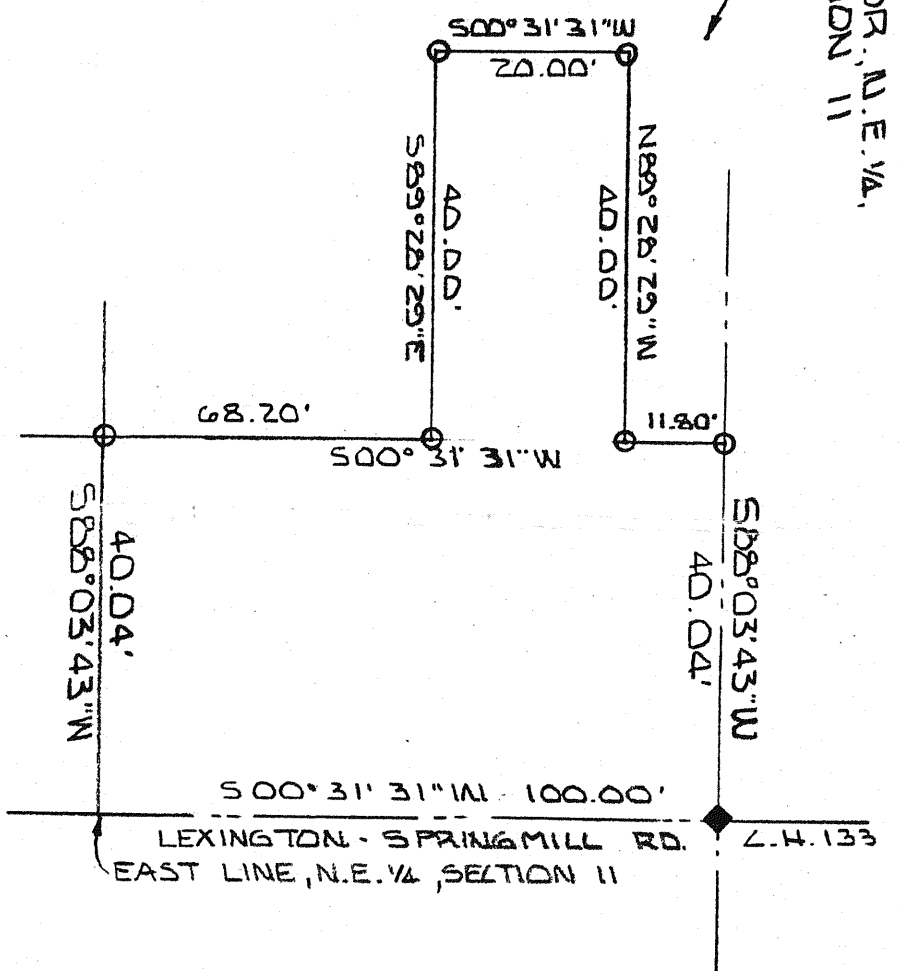
296.44'  
500°31'15.00"W  
D. J. KEEFER  
VOL. 745 PG. 424  
(2.0193 AC.)  
S88°03'43"E 887.96'  
N89°03'43"E 887.96'

MANSFIELD KOREAN  
UNITED METHODIST CHURCH  
VOL. 574 PG. 95

LEXINGTON-SPRINGMILL RD. L.H. 133

SE COR. S.E. 1/4, SECTION 2

N.E. COR. N.E. 1/4, SECTION 11



STANDARD ENERGY CO.  
VOL. 904 PG. 672

(37.1592 AC.)  
39.1775 AC. TOTAL N.E. 1/4

H. REINDL  
VOL. 472 PG. 555

H. & M. OGLE  
VOL. 902 PG. 517

WEST LINE, N.E. 1/4, SECTION 11  
N00°24'48"E 2611.52'

500°31'33"W 2292.11'  
N00°31'33"E 2292.11'

500°31'33"W 1895.88'

616.33'

5 68°55'58"W

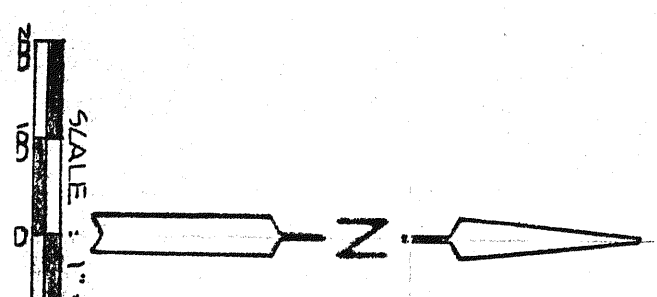
225.13'

SOUTH LINE, N.E. 1/4, SECTION 11

STONE FOUND  
S.W. COR. N.E. 1/4 SECTION 11  
MEYER PROPERTIES, INC.

BEING PART OF THE SOUTHEAST QUARTER, SECTION 2,  
AND THE NORTHEAST QUARTER, SECTION 11, TOWNSHIP 21,  
RANGE 19, SPRINGFIELD TOWNSHIP, RICHLAND COUNTY,  
OHIO. FEB. 16 1993

PLAT OF SURVEY  
FOR  
JAMES BRADY



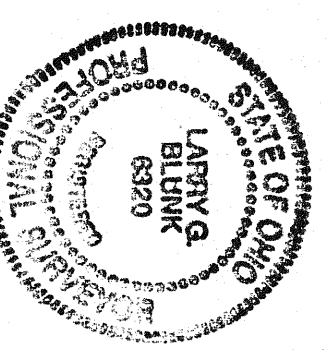
- ◆ IRON PIN FD. IN MONUMENT
- ▲ CONCRETE MONUMENT FD.
- IRON PIN SET AND CAPED
- BALUNK #632D
- STONE FOUND

BASIS OF BEARINGS: O.D. & T. RW  
PLANS LEXINGTON-SPRINGMILL RD. L.H. 133

NEW SPLIT  
TAX MAP APPROVED  
E.A.N.  
INITIAL 3-2-93  
DATE

NEW SURVEY  
OF EXISTING PARCEL  
TAX MAP APPROVED  
E.A.N.  
INITIAL 3-2-93  
DATE

*James B. Brady*  
LARRY G. BLUNK #6320



*Kenneth J. Fleming*  
KENNETH J. FLEMING  
TOWNSHIP INSPECTOR  
SPRINGFIELD TOWNSHIP  
February 27, 1993