

PLAT OF SURVEY
SHENANDOAH CEMETERY
N.E. 1/4, SECTION 34, BLOOMINGGROVE TOWNSHIP
RICHLAND COUNTY, OHIO

PREPARED FOR THE BLOOMINGGROVE TOWNSHIP BOARD OF TOWNSHIP TRUSTEES
 BY THE OFFICE OF THE RICHLAND COUNTY ENGINEER

BASIS FOR BEARING
 VOL. 848 PAGE 804

CURRENT OWNERS:

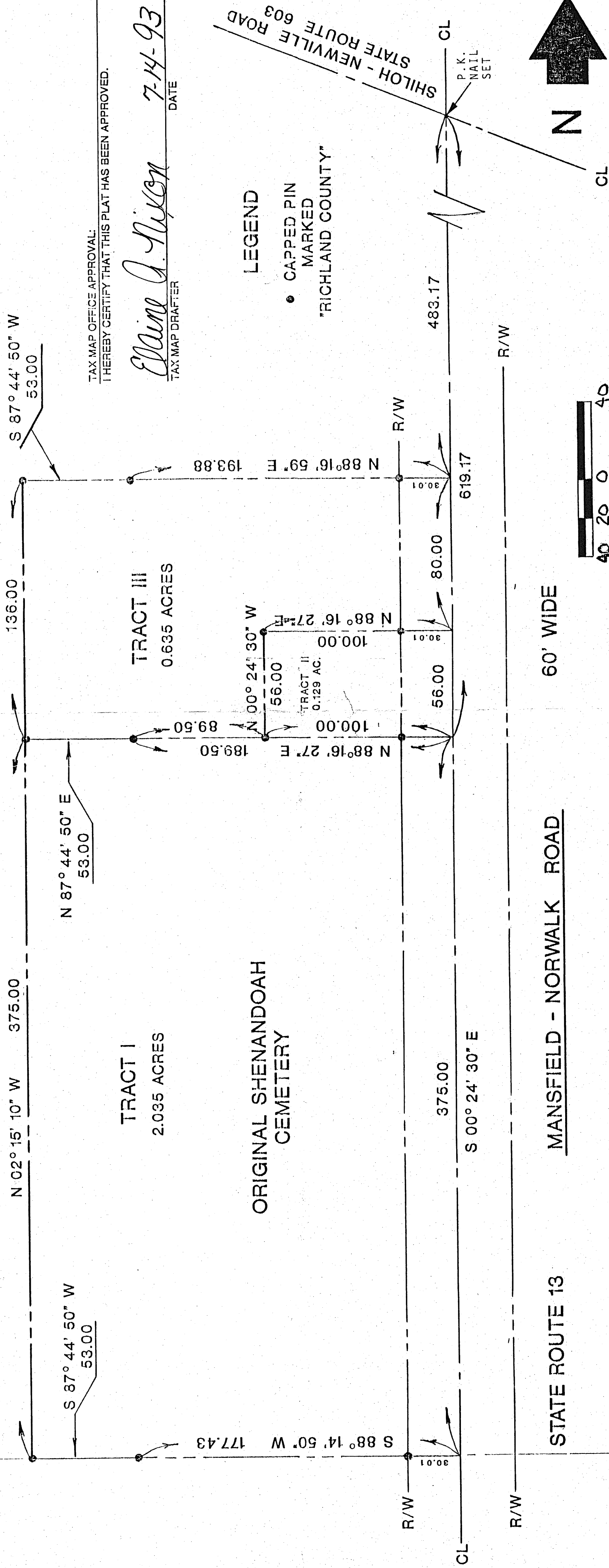
H. B. AND W. L. WINTERS
 Vol. 896 Pg. 562

ATTESTED:
Chris Beck
 CLERK OF THE BOARD

BLOOMINGGROVE TOWNSHIP
 BOARD OF TRUSTEES:

Carl H. Hymowitz
 CHAIRMAN
William W. Knobel
 MEMBER
Ernest B. Peters
 MEMBER

TOWNSHIP TRUSTEES' ACCEPTANCE
 WE, THE DULY ELECTED TRUSTEES OF BLOOMINGGROVE TOWNSHIP,
 DO HEREBY CERTIFY THIS PLAT AS A TRUE AND ACCURATE
 REPRESENTATION OF THE LANDS INCLUDED THEREON AND DO HEREBY
 ACCEPT THIS PLAT ON BEHALF OF BLOOMINGGROVE TOWNSHIP THIS
 DAY OF March, 1992.



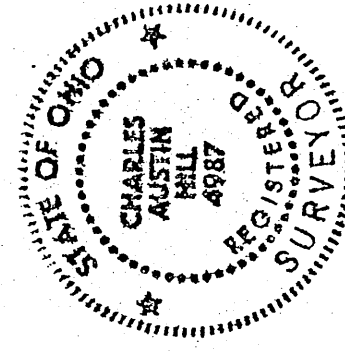
TAX MAP OFFICE APPROVAL:
 I HEREBY CERTIFY THAT THIS PLAT HAS BEEN APPROVED.

Elaine A. Nixon 7-14-93
 TAX MAP DRAFTER DATE

LEGEND
 • CAPPED PIN
 MARKED
 "RICHLAND COUNTY"

CERTIFICATION OF SURVEYOR:
 I HEREBY CERTIFY THAT THE ABOVE PLAT IS CORRECT, MARKERS WERE
 SET OR FOUND AS INDICATED, AND THE DIMENSIONS SHOWN HEREON ARE
 BASED ON A SURVEY MADE BY ME DURING AUGUST OF 1991.

Charles A. Hill
 CHARLES A. HILL, P.S.
 PROFESSIONAL SURVEYOR #4987



COUNTY ENGINEER APPROVAL:
 I HEREBY APPROVE THE ABOVE PLAT AS A TRUE REPRESENTATION OF
 THE PROPERTY IN QUESTION.

Thomas E. Beck 2/24/92
 THOMAS E. BECK, P.E., P.S.
 RICHLAND COUNTY ENGINEER DATE

PLAT OF SURVEY
SHENANDOAH CEMETERY

SCALE: 1" = 40'
 DATE: 2/19/92
 DRAWN BY: W.F.K.
 APPROVED BY: W.F.K.
 SECTION 34 - BLOOMINGGROVE TWP.
 DRAWING NUMBER: BG-92-01