

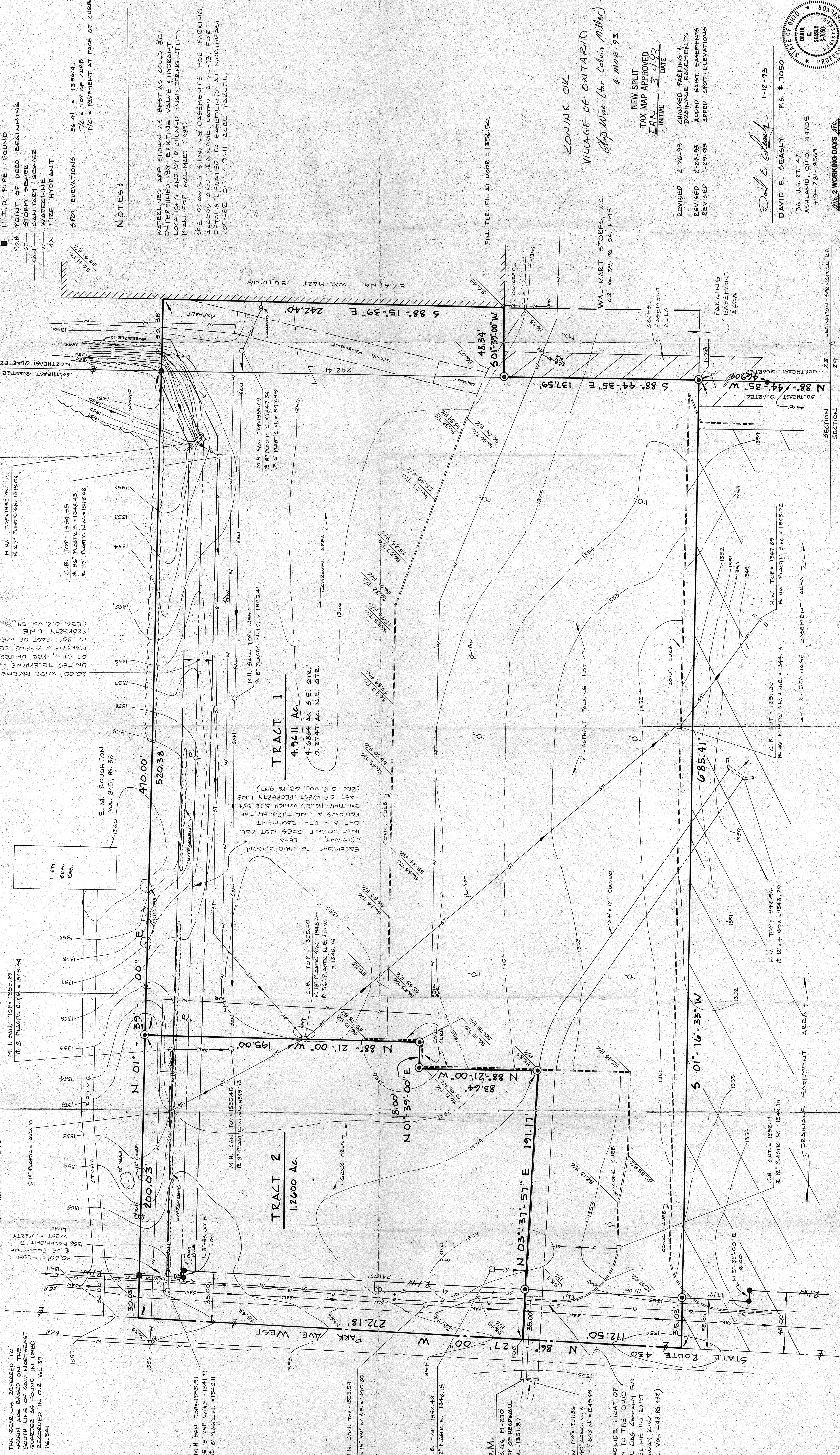
PLAT OF BOUNDARY AND TOPO AND TOPO SURVEY

BEING A PORTION OF A 25.417 AC. PARCEL AND A 9.558 AC. PARCEL CONVEYED TO WAL-MART PROPERTIES, INC. BY DEEDS RECORDED IN O.R. VOL. 39, PG. 541-546, BEING ALSO WITHIN THE NORTHEAST AND SOUTHEAST QUARTERS OF SECTION 23, SPRINGFIELD TOWNSHIP, T21-N, R19-W, VILLAGE OF ONTARIO, RICHLAND COUNTY, OHIO.

PERTINENT DOCUMENTS
 DEEDS O.R. VOL. 39, PG. 541-546
 O.R. VOL. 39, PG. 541-546
 #18" PLASTIC N.W. 1348.44
 #15" YSP W.A.E. = 1341.21
 #15" YSP W.A.E. = 1342.11
 #15" YSP W.A.E. = 1341.21
 #15" YSP W.A.E. = 1342.11
 #15" YSP W.A.E. = 1341.21
 #15" YSP W.A.E. = 1342.11

THE BEARINGS REFERRED TO HEREIN ARE BASED ON THE SOUTH LINE OF SAID NORTHEAST QUARTER BEING ALSO RECORDED IN O.R. VOL. 39, PG. 541

SCALE 1" = 30'
 0' 30' 60'



TRACT 1
 4.9611 AC.
 4.6864 AC. S.E. QTR.
 0.2747 AC. N.E. QTR.

TRACT 2
 1.2000 AC.

- LEGEND**
- 5/8" DIAMETER REBAR SET WITH I.D. CAP MARKED "SEASLY"
 - 3/8" DIAMETER BAR FOUND WITH I.D. CAP MARKED "RICHARD ENGINEERING"
 - 1" I.D. PIPE FOUND
 - POINT OF DEED BEGINNING
 - ST— STORM SEWER
 - SAN— SANITARY SEWER
 - W— WATERLINE
 - F— FIRE HYDRANT

NOTES:
 WATERLINES ARE SHOWN AS BEST AS COULD BE DETERMINED BY EXISTING VALVE & HYDRANT LOCATIONS AND BY RICHLAND ENGINEERING UTILITY PLAN FOR WAL-MART (1989).
 SEE DRAWING SHOWING EASEMENTS FOR PARKING, ACCESS AND DRAINAGE, DATED 2-23-93, FOR DETAILS RELATED TO EASEMENTS AT NORTHEAST CORNER OF 4.9611 ACCE PARCEL.

SPOT ELEVATIONS 54.41 = 1356.41
 1/2" = PAVEMENT AT FACE OF CURB

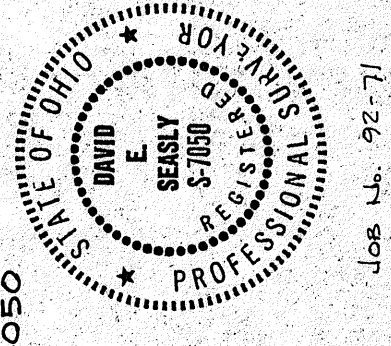
FIN. FLE. EL. AT DOOR = 1356.50

ZONING OK
 VILLAGE OF ONTARIO
 App. Wm. (for Calvin Miller)
 4 MAR. 93

NEW SPLIT
 TAX MAP APPROVED
 E.M. 3-4-93
 INITIAL DATE

REVISED 2-26-93 CHANGED PARKING & DRAINAGE EASEMENTS
 REVISED 2-24-93 ADDED EXIST. EASEMENTS
 REVISED 1-29-93 ADDED SPOT ELEVATIONS

DAVID E. SEASLY P.S. # 7050
 1361 U.S. RT. 42
 ASHLAND, OHIO 44805
 419-281-8569



2 WORKING DAYS BEFORE YOU DIG
 CALL TOLL FREE 800-362-2764
 OHIO UTILITIES PROTECTION SERVICE