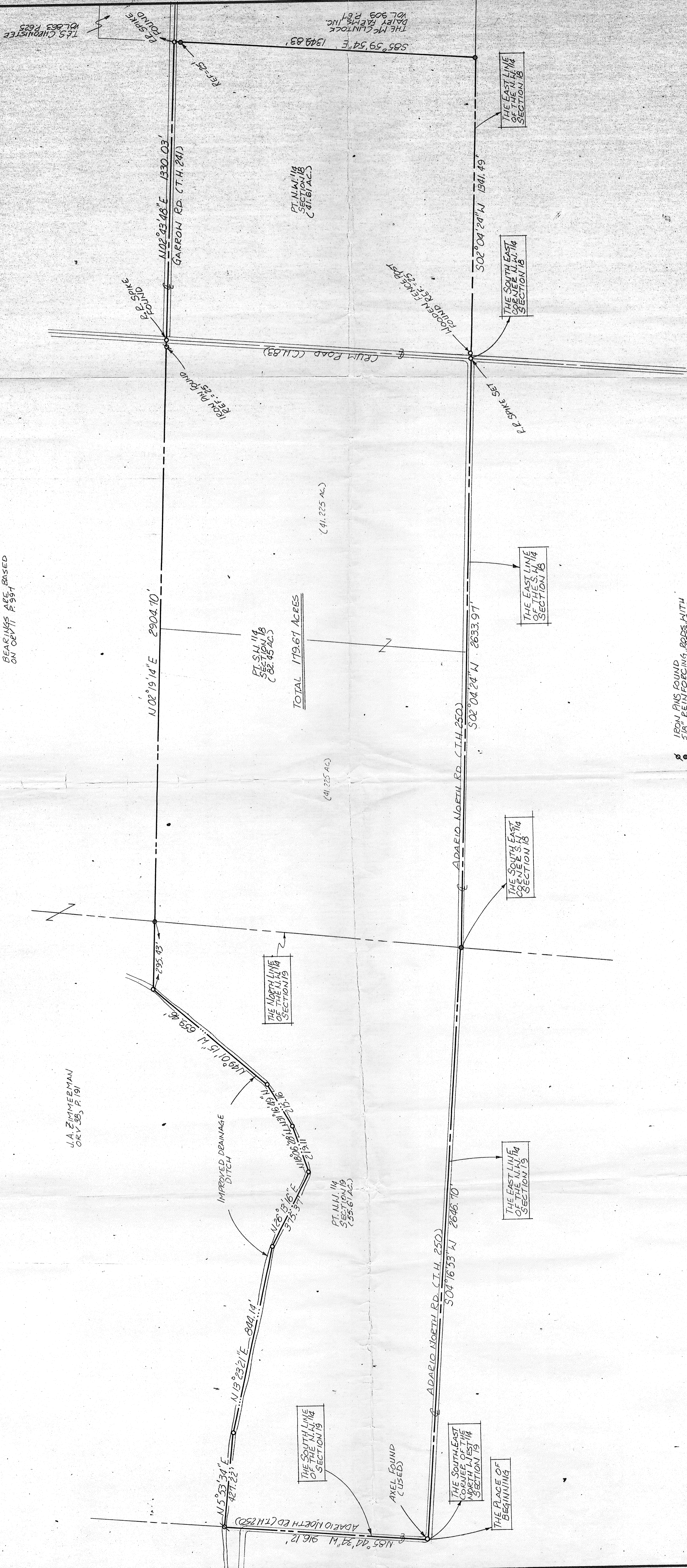
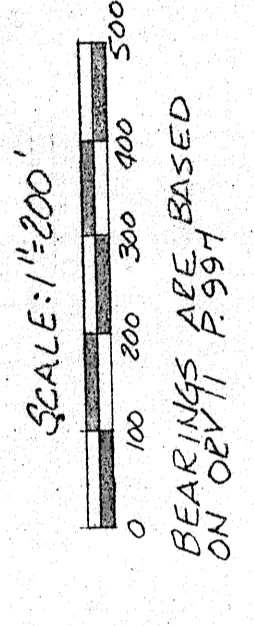


North



J.A. ZIMMERMAN
ORV. 35, P. 191

PT. N.M. 114
SECTION 18
(82.45 AC.)

TOTAL 179.67 ACRES
(41.225 AC.)

(41.225 AC.)

PT. N.M. 114
SECTION 19
(255.61 AC.)

THE SOUTH LINE
OF THE N. 1/4
SECTION 19

THE SOUTH EAST
CORNER OF THE
NORTH WEST 1/4
SECTION 19

THE PLACE OF
BEGINNING

THE EAST LINE
OF THE N. 1/4
SECTION 19

THE SOUTH EAST
CORNER N. 1/4
SECTION 18

THE EAST LINE
OF THE N. 1/4
SECTION 18

THE SOUTH EAST
CORNER N. 1/4
SECTION 18

THE EAST LINE
OF THE N. 1/4
SECTION 18

FROM PINS FOUND
TO BE IN SECTION # 88889 SET.
I.D. CASE # SEILEY # 88889 SET.

Douglas C. Seiler
 SURVEYOR
 DOUGLAS C. SEILER #88889
 5514 S. NORTH PLAIN ST.
 MANSFIELD, OHIO
 (419) 525-3894

STATE OF OHIO
 DEPARTMENT OF REVENUE
 DIVISION OF TAXATION

APPROVED
 TAX MAP OFFICE
 INITIAL: *ESM* DATE: 3/11/90

SURVEY PLAT FOR PROPERTY TRANSFER
 KOCHENDERFER FARMS, INC.
 PT. N.M. 114 SECTION 18 T. 25 R. 17
 PT. S.W. 1/4 SECTION 18 T. 25 R. 17
 PT. S.W. 1/4 SECTION 19 T. 25 R. 17
 BUTLER TOWNSHIP
 RICHLAND COUNTY, OHIO
 DATE: MAR. 13, 1990 SCALE: 1"=200'
 DRAWN BY: LAA