

T. & S. KEIRKE  
VOL. 543 P. 85  
180 AC.

THE N.E. CORNER  
OF THE S.E. 1/4  
SECTION 12

THE N.W. CORNER  
OF THE S.W. 1/4  
SECTION 7

SCHLAUFMAN & CO.  
VOL. 876 P. 485  
1/4 AC.

NORTH

THE NORTH LINE  
OF THE S.E. 1/4  
SECTION 12

THE PLACE OF  
BEGINNING  
PARCEL "B"

THE PLACE OF  
BEGINNING  
PARCEL "A"

THE NORTH LINE  
OF THE S.W. 1/4  
SECTION 7

J. H. PEY  
VOL. 380 P. 282  
80 AC.

N02°48'20"E 2857.80'

PARCEL "B"  
PT. S.E. 1/4 SEC. 12  
83.14 AC.

TOTAL = 161.38 AC.

(41.72 AC.)

THE EAST LINE  
OF THE S.E. 1/4  
SECTION 12

THE WEST LINE  
OF THE S.W. 1/4  
SECTION 7

S03°04'10"W 2842.03'  
N03°04'10"E 2842.03'

PARCEL "A"  
PT. S.W. 1/4 SEC. 7  
8.21 AC.

(41.06 AC.)

S06°09'20"E 1359.18'

S03°35'50"W 1320.00'

REF. -8.00'

(41.45 AC.)

THE S.E. CORNER  
OF THE S.E. 1/4  
SECTION 12

THE S.W. CORNER  
OF THE S.W. 1/4  
SECTION 7

(37.15 AC.)

N83°03'40"W 1339.80'

N88°14'10"W 1334.91'

A. B. LIED  
OFFICIAL RECORD, VOL. 11 P. 991  
75.87 AC.

J. C. CHRISTNER  
VOL. 517 P. 422  
40 AC.

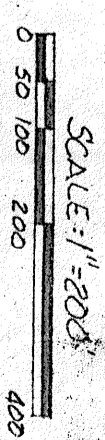
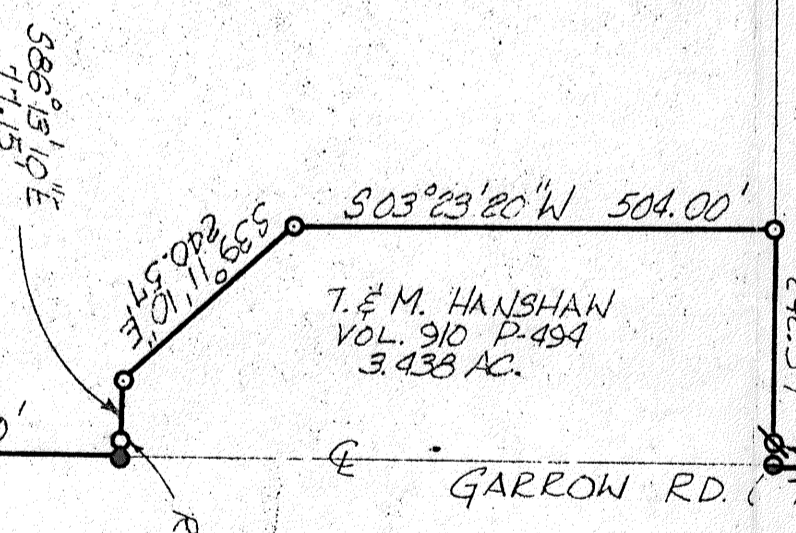
THE SOUTH LINE  
OF THE S.W. 1/4  
SECTION 7

THE SOUTH LINE  
OF THE S.W. 1/4  
SECTION 12

T. & M. HANSHAW  
VOL. 910 P. 494  
3.438 AC.

THE McCLINTOCK  
DAVEY FARMS INC.  
VOL. 909 P. 65  
80 AC.

GARRON RD. (T.H. 241)



SCALE: 1"=200'

- LEGEND:
- B.P. SPIKE SET
  - P.K. SPIKE SET
  - IRON PIN FOUND
  - ⊗ IRON PIN SET

NOTE:  
BEARINGS ARE BASED ON  
DEED VOL. 597 P. 607

SURVEY BY  
*James C. Seiler*  
JAMES C. SEILER  
REG. SURVEYOR #2889  
2512 NORTH MAIN ST.  
MANSFIELD, OHIO  
(419) 525-3644

SURVEY PLAT FOR PROPERTY TRANSFER	
FARM CREDIT SERVICES	
PT. S.W. 1/4 SECTION 7 T25 R11	
PT. S.E. 1/4 SECTION 12 T25 R18	
BUTLER TWP. RICHLAND COUNTY, OHIO	
DATE: JULY 8, 1989	SCALE: 1"=200'
DRWG. NO. 892307	DRWN. BY: JAA